

Open Space Report to the Finance, Revenue and Bonding Committee and the State Bond Commission

August 2017

Overview

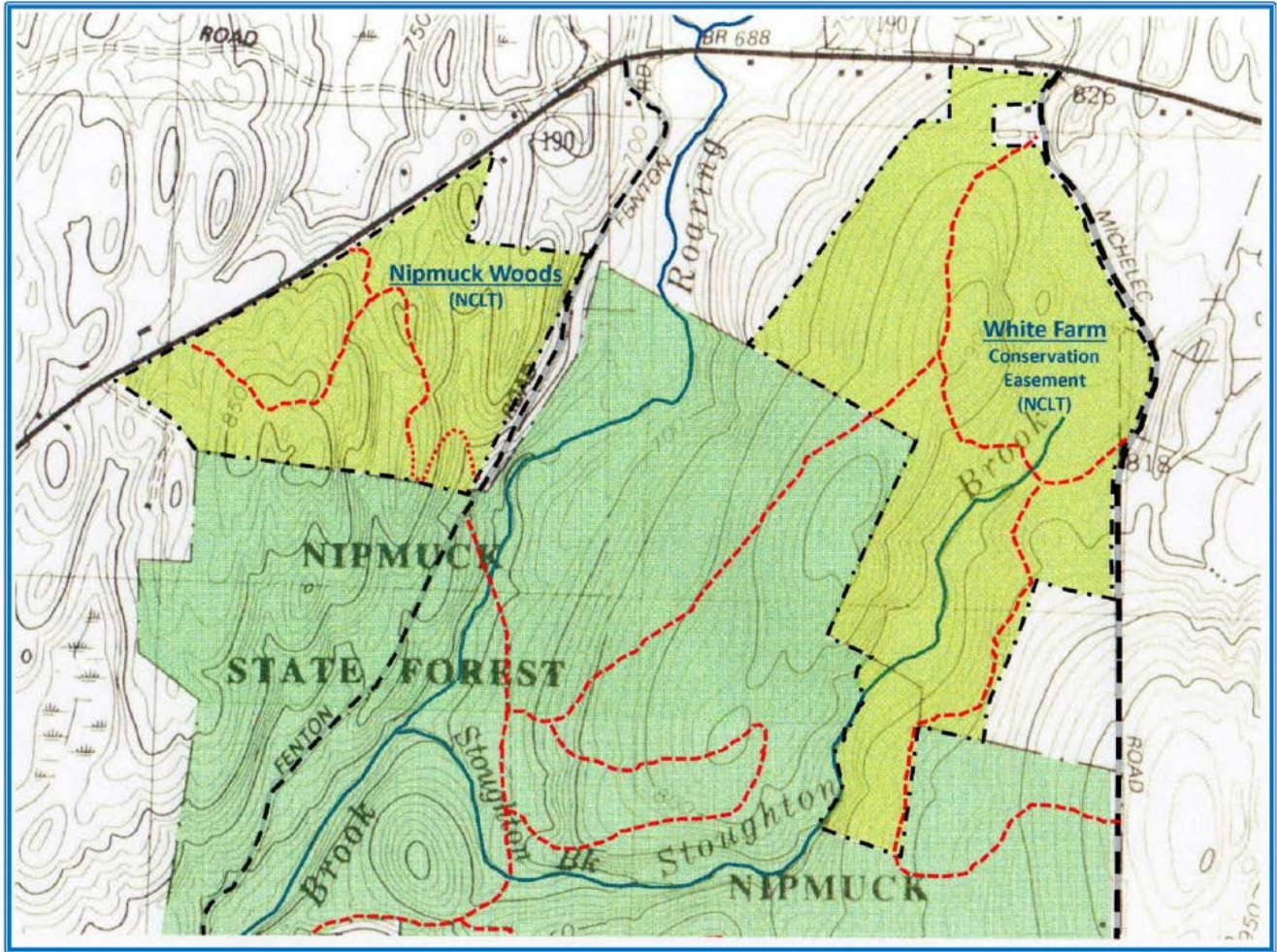
Section 22a-6v of the General Statutes of Connecticut requires the Commissioner of the Department of Energy & Environmental Protection to submit a report to the joint standing committee of the General Assembly having cognizance of matters relating to finance, revenue and bonding and to the State Bond Commission each month. The report provides information on the acquisition of land or interests in land by the state, a municipality, water company or nonprofit organization using funds authorized for the Open Space and Watershed Land Acquisition Program established under Sections 7-131d and the Recreation and Natural Heritage Trust Program established under Sections 23-73 to 23-79 of the Connecticut General Statutes.

Open Space and Watershed Land Acquisition Grant Program

The Open Space and Watershed Land Acquisition Grant Program provides grants to municipalities and private nonprofit land conservation organizations for the acquisition of open space land and to water companies to acquire land to be classified as Class I or Class II watershed land. The State of Connecticut receives a conservation and public access easement on property acquired to ensure that the property will be protected and available to residents of Connecticut as open space in perpetuity. The following grant was closed in August 2017. Additional information on this project follows.

Sponsor	Project	Acres
Northern Connecticut Land Trust, Inc.	Nipmuck Woods, Stafford	79.81

Nipmuck Woods, Stafford
Northern Connecticut Land Trust
Fee Acquisition



This 80± acre forested parcel is located in southeast Stafford, adjacent to Nipmuck State Forest, which further connects to White Farm, a 173± acre property preserved by Conservation Easement by Northern CT Land Trust with DEEP open space grant funding. There are two existing parking areas on Route 190, and the land trust will add new signage and trail markings along existing logging trails and add a new trail which will cross Roaring Brook and extend to White Farm. This acquisition provides forest, wildlife and watershed protection of Roaring Brook, one of 15 enhanced wild trout management streams in Connecticut. It will provide additional opportunities for passive recreation and wildlife observation adding to a large unfragmented forest block protected by Nipmuck State Forest.

Recreation and Natural Heritage Trust Program

The Recreation and Natural Heritage Trust Program is the State of Connecticut's primary program for the acquisition of lands for the beneficial use and enjoyment of the public as additions to the State's system of parks, forests, wildlife, fisheries and natural resource management areas. The program acquires land that represents the ecological diversity of Connecticut, including natural features such as rivers, mountainous areas, coastal systems and their natural areas, in order to ensure the conservation of such land for recreational, scientific, educational, cultural and aesthetic purposes. The following acquisition was closed in August 2017. Additional information on this project follows.

Property Name	Location	Cooperator	Cooperator Share	Fee Acreage	State Share	Purpose of Acquisition
Corpridge Land Co. LLC	Rocky Hill	Corpridge Land Co. LLC	\$1,372,750*	14.45	\$0 Donation	Donated Addition to Dinosaur State Park

* *approximate fair market value of donated property*

Corpridge Land Co., LLC Property

Rocky Hill

Fee Acquisition



The Corpridge Land Corporation, LLC property consists of 14.45 acres of land located at 255 Capital Boulevard, Rocky Hill. The property was generously donated to the DEEP to expand Dinosaur State Park. Extending from Capital Boulevard north to West Street, this mainly wooded property will provide additional passive recreation opportunities, and will help expand and protect this popular park.