

In Connecticut,
recycling is state law!
Everyone must recycle.

That includes: every resident living in a single or multifamily house or building; every business including non-profits; and all public and private agencies and institutions, e.g., colleges, hospitals, local and state government agencies. ***All must recycle.***



Printed on 30% post-consumer recycled content paper.

Revised January 2009

State of Connecticut DEP

Recycling Reminder



Connecticut Department of Environmental Protection
Bureau of Materials Management and Compliance Assurance
Source Reduction & Recycling Program
79 Elm Street
Hartford, CT 06106-5127
(860) 424-3365
www.ct.gov/dep/recycle



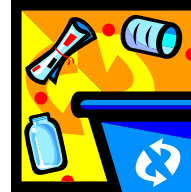
Why Recycle?

- Helps protect your health as well as the environment.
- Reduces the amount of waste that must be disposed, which means less waste to incinerate or landfill.
- Reduces air and water pollution.
- Conserves precious natural resources, since less raw material need to be extracted and processed.
- Saves energy – for example, by recycling one aluminum can we save enough energy to run a TV set for **three hours!**
- Reduces greenhouse gas emissions
- Reduces the need to cut down trees to make paper – recycling a single run of the *Sunday New York Times* would save **75,000 trees**.
- Makes us be more sustainable because we are borrowing less material and energy from our children's future.
- CT's estimated recycling rate is 24% -30%. The CT State Solid Waste Management Plan (Dec 2006) calls for a 58% recycling rate. **We need to do better.**
- And in Connecticut, **it is the law!**



What items are required to be recycled?

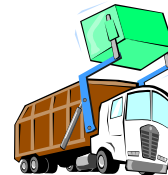
- Glass & metal food and beverage containers
- Corrugated cardboard
- Newspaper
- White office paper
- Scrap Metal
- Ni-Cd rechargeable batteries (from electronics)
- Used Crankcase oil
- Lead acid batteries (from vehicles)
- Leaves
- Grass- banned from disposal at landfills and resource recovery facilities (incinerators). Grass clippings should be left on the lawn or, if necessary, composted.



In addition to the mandated items, many municipalities have ordinances which require additional items to be recycled, such as numbers 1 and 2 plastic containers, old magazines, drink boxes, mini-juice cartons, and discarded mail. To find out about those additional items, contact your municipal recycling contact, your local department of public works, or refer to your town website.

State law requires that your hauler:

- Provide a warning notice to customers suspected of violating separation requirements.
- Assist the municipality in identifying customers responsible for creating solid waste loads containing significant amounts of recyclables detected by the receiving resource recovery or solid waste facility.
- **May not knowingly mix other solid waste with items designated for recycling.**
- May have their garbage loads rejected at a solid waste facility if the load contains a significant amount of recyclables. This costs your hauler time and money. **These costs may be passed on to you, the customer.**



Call DEP at (860) 424-3365 if:

- You see your hauler mixing recyclables and garbage in the same truck, especially if the truck is not a recycling truck.
- Your hauler tells you that recycling is not necessary or they will recycle a mixed load elsewhere.
- You require technical assistance or further information about starting a recycling program.

Finally...

Source reduction – the **reduction** of waste at or near the source of generation (in our homes, businesses, and institutions) and **reuse** are the best ways to divert the growing volume of waste. The reason is simple:

the less waste generated, the less waste there is to dispose.

In general, reduction and reuse are cost-saving, resource-conserving, environmentally sound alternatives to traditional forms of solid waste management.



And remember – if you are not buying recycled – you are not really recycling! Work with your suppliers to buy reusable, more durable, and recycled content products.

Reduce, Reuse, Recycle!

State of Connecticut DEP

Connecticut Department of Environmental Protection
Bureau of Materials Management and Compliance Assurance
Source Reduction & Recycling Program
79 Elm Street
Hartford, CT 06106-5127
(860) 424-3365
www.ct.gov/dep/recycle