



Radon Testing Guidance

For Child Day Care Centers
& Group Day Care Homes

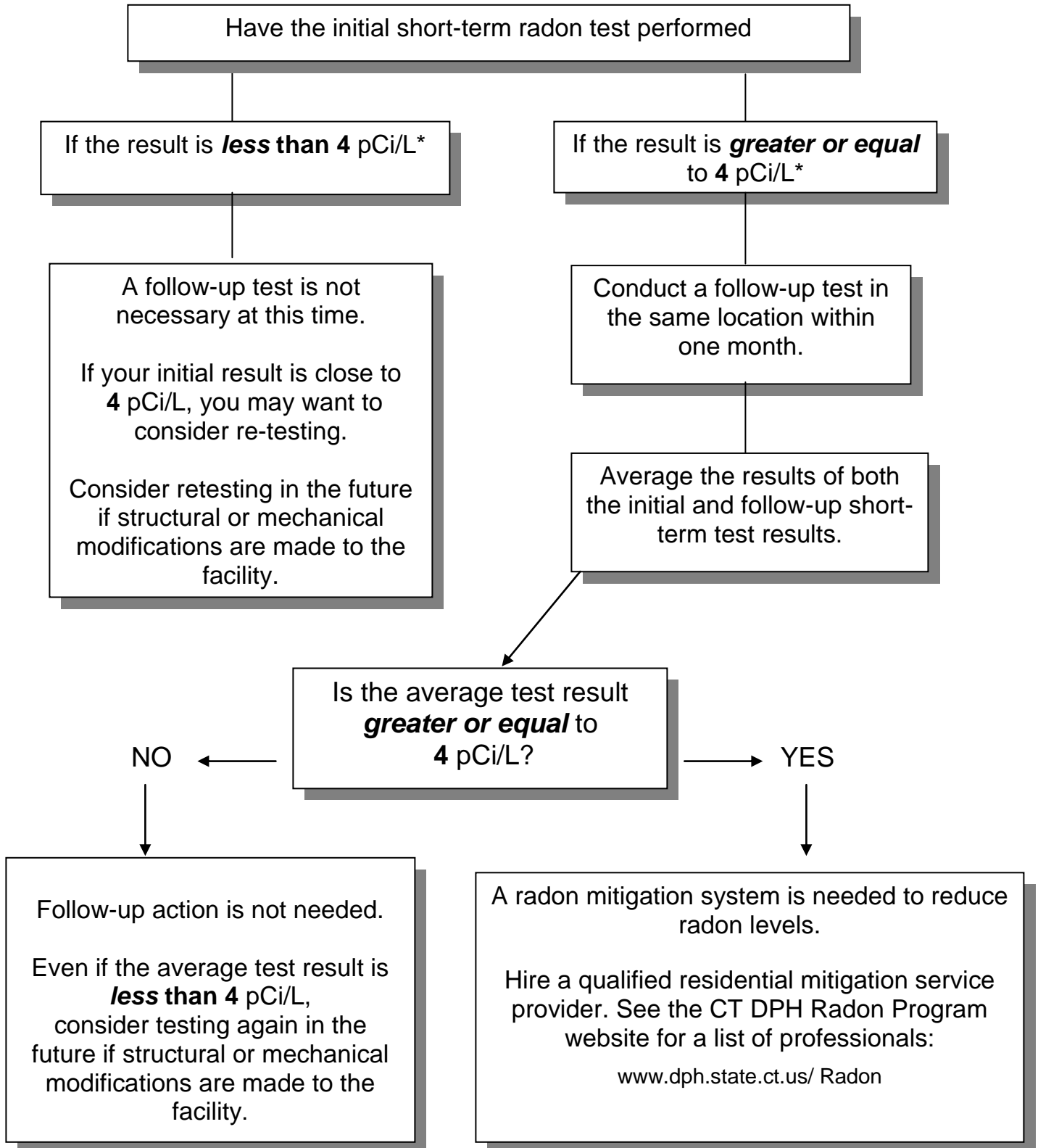


This checklist will help ensure that an accurate and valid radon test was conducted in the facility. Use the following checklist as guidance.

- The CT Department of Public Health (CT DPH) recommends that you hire a qualified radon measurement professional to conduct radon testing.** Visit the DPH Radon Program website for a list of nationally qualified radon measurement testing professionals: <http://www.ct.gov/radon>
- Test for radon in the lowest frequently occupied areas of the facility.** If the facility uses the basement level or the ground floor of a building, a minimum of one (1) radon test shall be conducted. One test per 2,000 square feet of open area is recommended.
- The testing must be completed between the months of November through April.**
- Testing should *not* be conducted during unusual weather events.** Severe rainstorms, snowstorms, and periods of unusually high winds can affect the level of radon in a building and skew test results.
- Closed-building conditions must be maintained for 12 hours before testing and throughout the test period (48+ hours).** This means that all windows and doors to the outside should be kept closed for the entire test (with the exception of when people are leaving or entering).
- Test during weekdays or whenever the HVAC systems are operating normally.**
- The test device should be placed at least twenty (20) inches above the floor, at least one (1) foot from exterior walls and at least three (3) feet from doors or windows.** Do *not* test for radon in a kitchen, bathroom, or hallway. The device should *not* be placed in direct sunlight. The device should *not* be placed near drafts, furnaces, boilers, fireplaces, vents, or appliances.
- Do NOT move the radon test device after it has been placed.** Disturbance of the radon test device will invalidate the test results.
- All radon tests must remain in place for a minimum of 48 hours.** The lab cannot analyze a device unless it has been exposed for at least 48 hours. The test device must be retrieved and sent to the lab immediately upon completion.
- The CT DPH and the local health director shall be notified of the results and the results must be posted with the license.** Mail a copy of the lab result to the CT DPH Daycare Licensing Unit.

If you have any further questions on radon testing, please contact the
Radon Program at:
(860) 509-7367

The following flowchart contains the **State of CT Department of Public Health** recommended testing protocol for child day care centers and group day care homes.



* Radon is measured in units called “picocuries per liter” or pCi/L.