

**STATE OF CONNECTICUT DEPARTMENT OF PUBLIC HEALTH
PRELIMINARY INFLUENZA ACTIVITY REPORT
For Week 10 (week ending March 14, 2009)**



Preliminary influenza data reviewed from the week ending March 14th revealed that a high level of activity continues to be observed during the 24th week of the official 2008-2009 influenza season. These data include a total of 3,663 laboratory confirmed test results from various Connecticut hospitals that reveal the presence of both type A and type B flu viruses, and include reports from all 8 (Fairfield, Hartford, Litchfield, Middlesex, New Haven, New London, Tolland, and Windham) Connecticut counties (see Table 1, Figure 1). Our national flu activity classification remained as “widespread” as a result of the continued high flu activity statewide. The DPH laboratory has culture-confirmed the presence of influenza virus in 274 clinical specimens. Characterization of these isolates reveals the presence of the influenza A (H1N1) subtype in 132 specimens, the influenza A (H3N2) subtype in 56 specimens, an unspecified influenza A isolate in 2 specimens, and influenza B in 84 specimens (see Figure 2). Clinicians should be aware of oseltamivir resistance among many flu A (H1N1) strains. Although decreasing, influenza activity remains widespread and exceeds weekly activity observed during the equivalent weeks in most of the last 5 seasons (see Figures 3a & 3b).

Six additional indicators of flu activity are being monitored throughout these initial weeks of the 2008-2009 flu season. Information on respiratory outbreaks and laboratory confirmed influenza cases in long-term care facilities are shown in Figure 4. Data on Connecticut residents presenting with influenza-like-illness (ILI) as reported by participants of the United States Outpatient Influenza-like Illness Surveillance Network (ILINet) (formerly known as the U.S. Influenza Sentinel Provider Surveillance Network) are shown in Figure 5. These reporting sites also include participants in the Connecticut Influenza Super Sentinel Surveillance Pilot Project organized this year to provide additional information on outpatient ILI activity.

Data on emergency department visits from our Hospital Emergency Department Syndromic Surveillance (HEDSS) System are also analyzed. One category in particular, fever/flu, has been shown to correlate well with influenza activity (see Figure 6). Patients with more severe illness who are admitted into Connecticut hospitals are tracked by the Connecticut Hospital Admissions Syndromic Surveillance (HASS) System. Data on one category, total statewide pneumonia admissions, correlates with flu activity (see Figure 7). Finally, selected mortality data are monitored each week including pneumonia and influenza deaths from Connecticut cities that participate in the U.S. 122 Cities Mortality Reporting System (see Figure 8), and reports of influenza associated pediatric deaths (none reported to date this flu season). These surveillance systems are providing additional evidence that Connecticut is experiencing a high, but decreasing level of flu activity as compared with recent influenza seasons.

The CDC has posted its 24th national influenza activity map showing no states with initial “sporadic” flu activity, 2 states with “local” flu activity, 18 states with a higher “regional” level of activity, and 30 states with the highest “widespread” level of activity. The most recent CDC weekly influenza activity map can be viewed at: <http://www.cdc.gov/flu/weekly/usmap.htm>

If you have any questions concerning this report, please contact Alan Siniscalchi or Maria Andrews at the Department of Public Health, Epidemiology and Emerging Infections Program, by calling 860-509-7994.

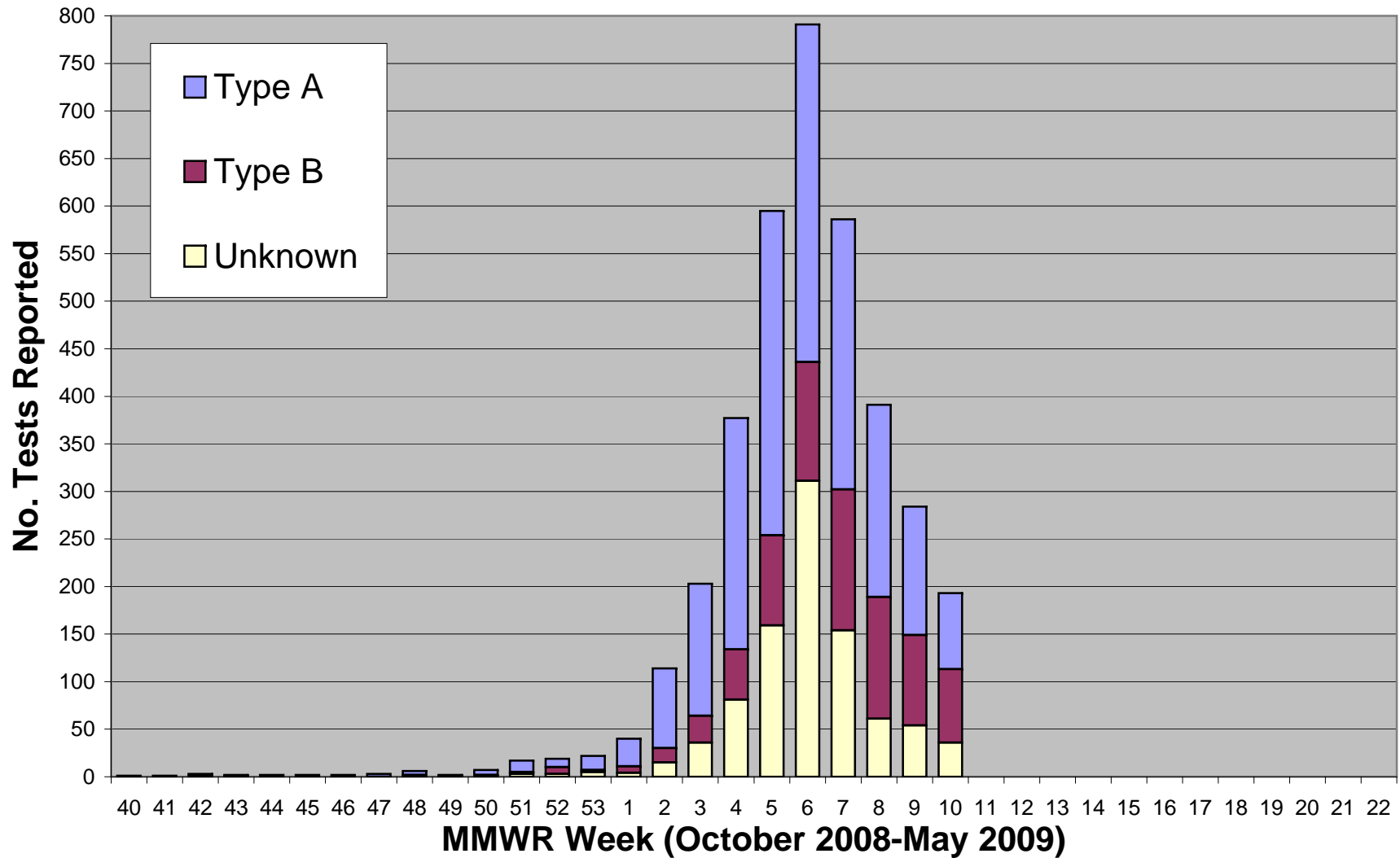
**Connecticut Department of Public Health
2008-2009 Laboratory Confirmed Influenza Testing
For Week 10 (week ending March 14, 2009)**

| Results by | | Previous | New | Total |
|--------------|------------|--------------|------------|--------------|
| TEST: | Culture | 250 | 24 | 274 |
| | Rapid Test | 3,211 | 178 | 3,389 |
| FLU TYPE: | Type A | 1,863 | 85 | 1,948 |
| | Type B | 709 | 81 | 790 |
| | Unknown | 889 | 36 | 925 |
| COUNTY: | Fairfield | 1,284 | 54 | 1,338 |
| | Hartford | 357 | 19 | 376 |
| | Litchfield | 152 | 11 | 163 |
| | Middlesex | 220 | 10 | 230 |
| | New Haven | 1,143 | 82 | 1,225 |
| | New London | 103 | 8 | 111 |
| | Tolland | 89 | 6 | 95 |
| | Windham | 113 | 12 | 125 |
| | GENDER: | Female | 1,789 | 115 |
| | Male | 1,672 | 87 | 1,759 |
| Total | | 3,461 | 202 | 3,663 |

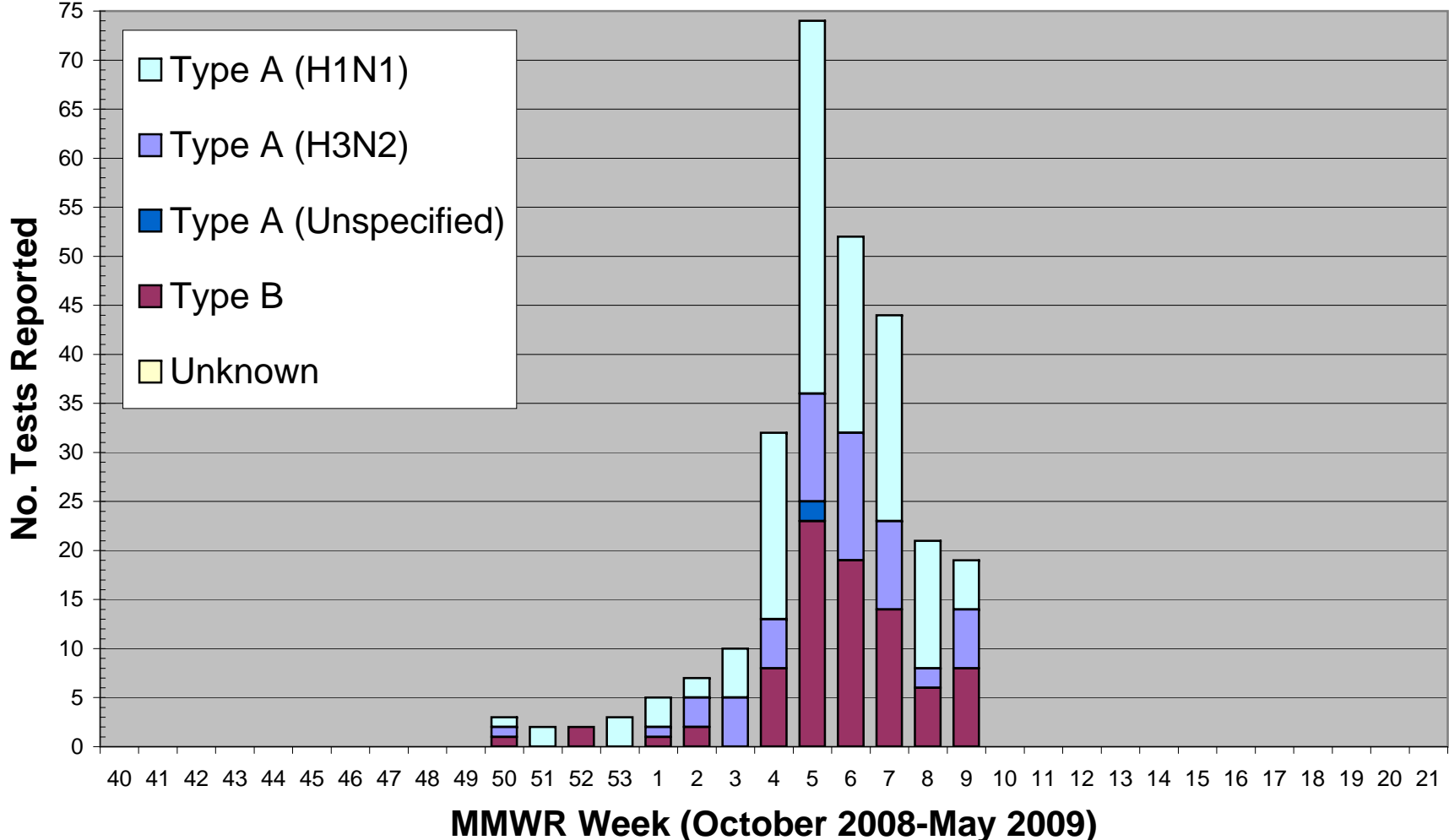
| Age: | Previous | New | Total | Week | Dates - 2009 | Total |
|--|----------|-----|-------|------|----------------|-------|
| 0-4 | 385 | 43 | 428 | 1 | January 4 - 10 | 40 |
| 5-24 | 1,964 | 92 | 2,056 | 2 | January 11-17 | 114 |
| 25-64 | 932 | 50 | 982 | 3 | January 18-24 | 203 |
| ≥65 | 180 | 17 | 197 | 4 | January 25-31 | 377 |
| Age Range: <1 – 101 Average Age: 22.5 | | | | 5 | February 1-7 | 595 |
| | | | | 6 | February 8-14 | 791 |

| Week | Dates - 2008 | Total | Week | Dates - 2009 | Total |
|------|-------------------|-------|------|-------------------|-------|
| | | | 7 | February 15-21 | 586 |
| | | | 8 | February 22-28 | 391 |
| | | | 9 | March 1-7 | 284 |
| 40 | Sept. 28 - Oct. 4 | 1 | 10 | March 8-14 | 193 |
| 41 | October 5-11 | 1 | 11 | March 15-21 | |
| 42 | October 12-18 | 3 | 12 | March 22-28 | |
| 43 | October 19-25 | 2 | 13 | March 29- April 4 | |
| 44 | Oct. 26 - Nov. 1 | 2 | 14 | April 5-11 | |
| 45 | November 2-8 | 2 | 15 | April 12-18 | |
| 46 | November 9-15 | 2 | 16 | April 19-25 | |
| 47 | November 16-22 | 3 | 17 | April 26- May 2 | |
| 48 | November 23 -29 | 6 | 18 | May 3- 9 | |
| 49 | Nov. 30 – Dec. 6 | 2 | 19 | May 10-16 | |
| 50 | December 7-13 | 7 | 20 | May 17-23 | |
| 51 | December 14-20 | 17 | 21 | May 24-30 | |
| 52 | December 21-27 | 19 | 22 | May 31- June 6 | |
| 53 | Dec. 28- Jan. 3 | 22 | | | |

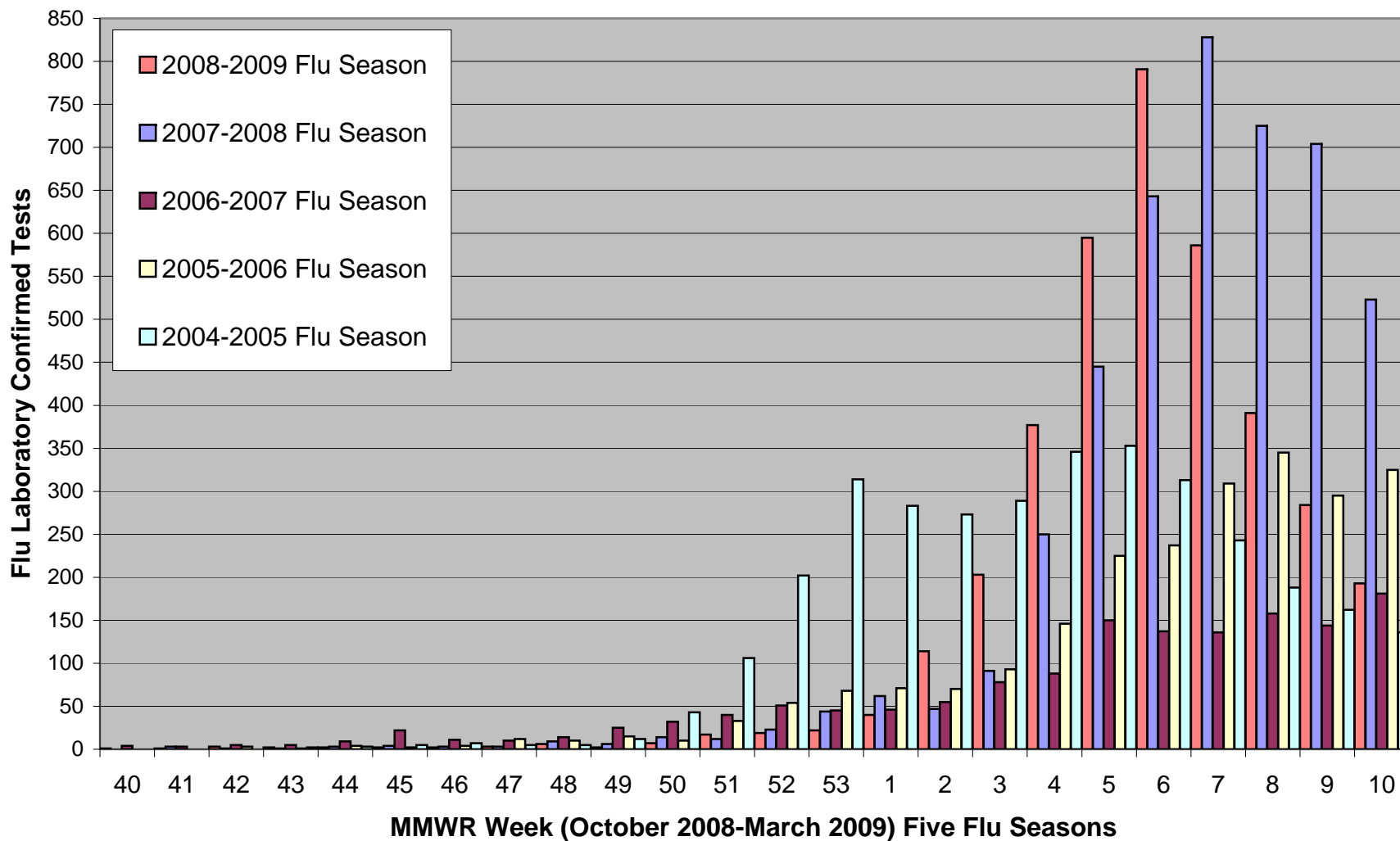
Figure 1. Laboratory Confirmed Tests by Flu Type, Connecticut, 2008-2009 Influenza Season



**Figure 2. Department of Public Health Laboratory Culture
Confirmed Tests by Flu Type,
Connecticut, 2008-2009 Flu Season**



**Figure 3a. Laboratory Confirmed Tests by Flu Season
Connecticut, 2004-2009**



**Figure 3b. Laboratory Confirmed Tests by Flu Season
Connecticut, 2003-2009**

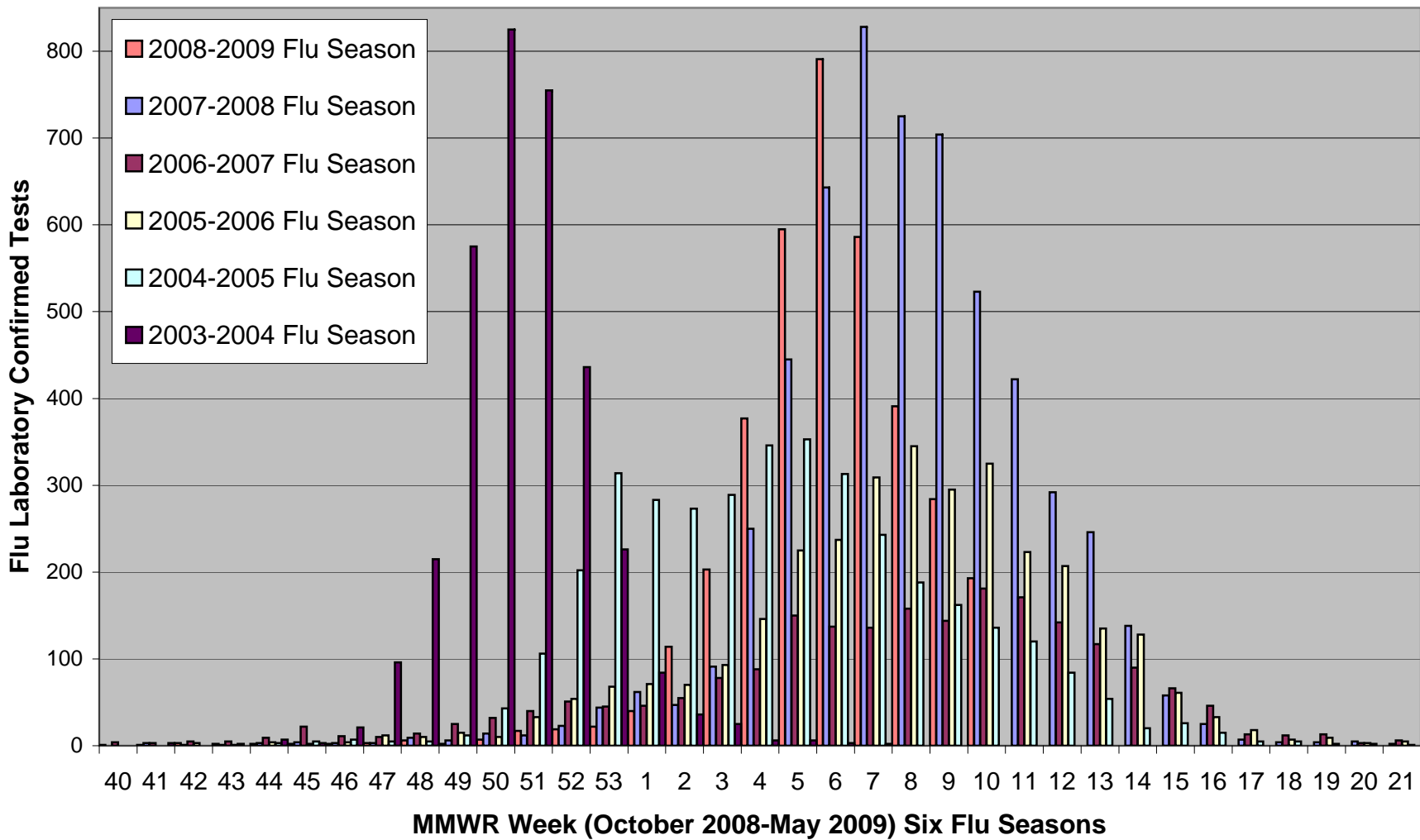
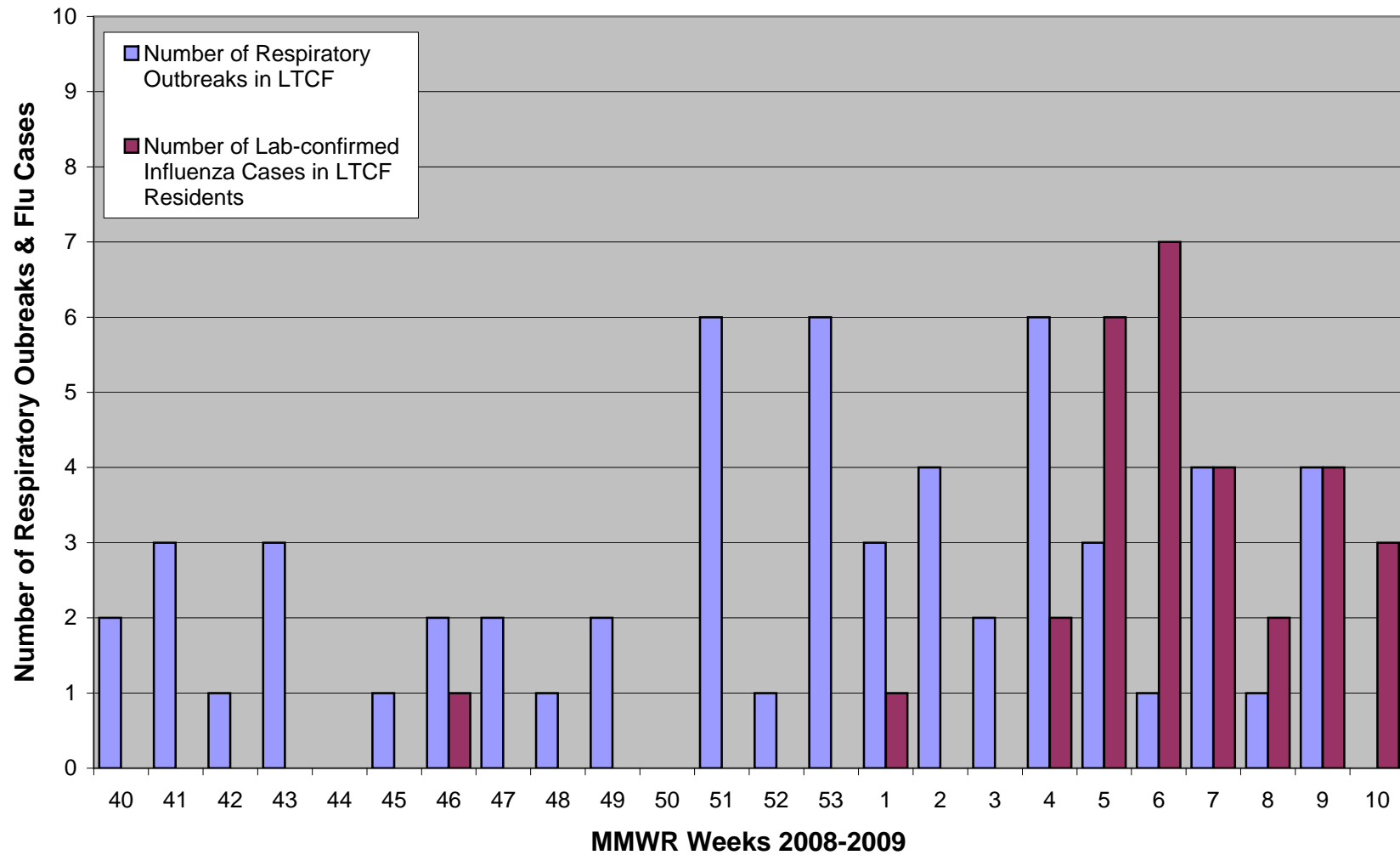


Figure 4. Respiratory Outbreaks & Influenza in Long-term Care Facilities (LTCF), Connecticut, 2008-2009 Influenza Season



**Figure 5. Outpatient Influenza-Like Illness Surveillance Network (ILINet),
Statewide Visits of Patients with Influenza-Like Illness (ILI), Connecticut,
2007-2009**

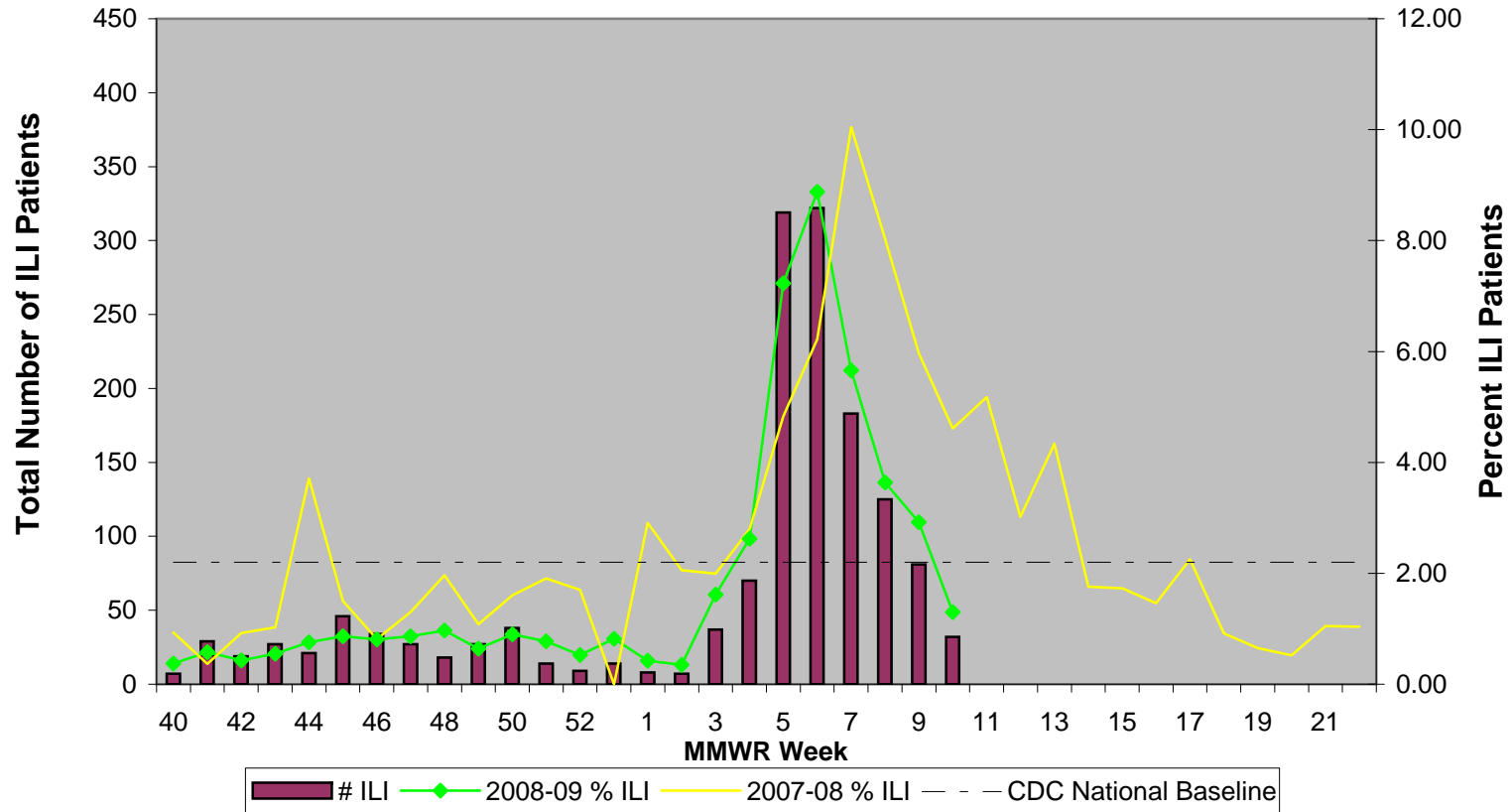


Figure 6. Hospital Emergency Department Syndromic Surveillance (HEDSS) System, Statewide "Fever/Flu" Visits by Flu Season, Connecticut, 2006-2009

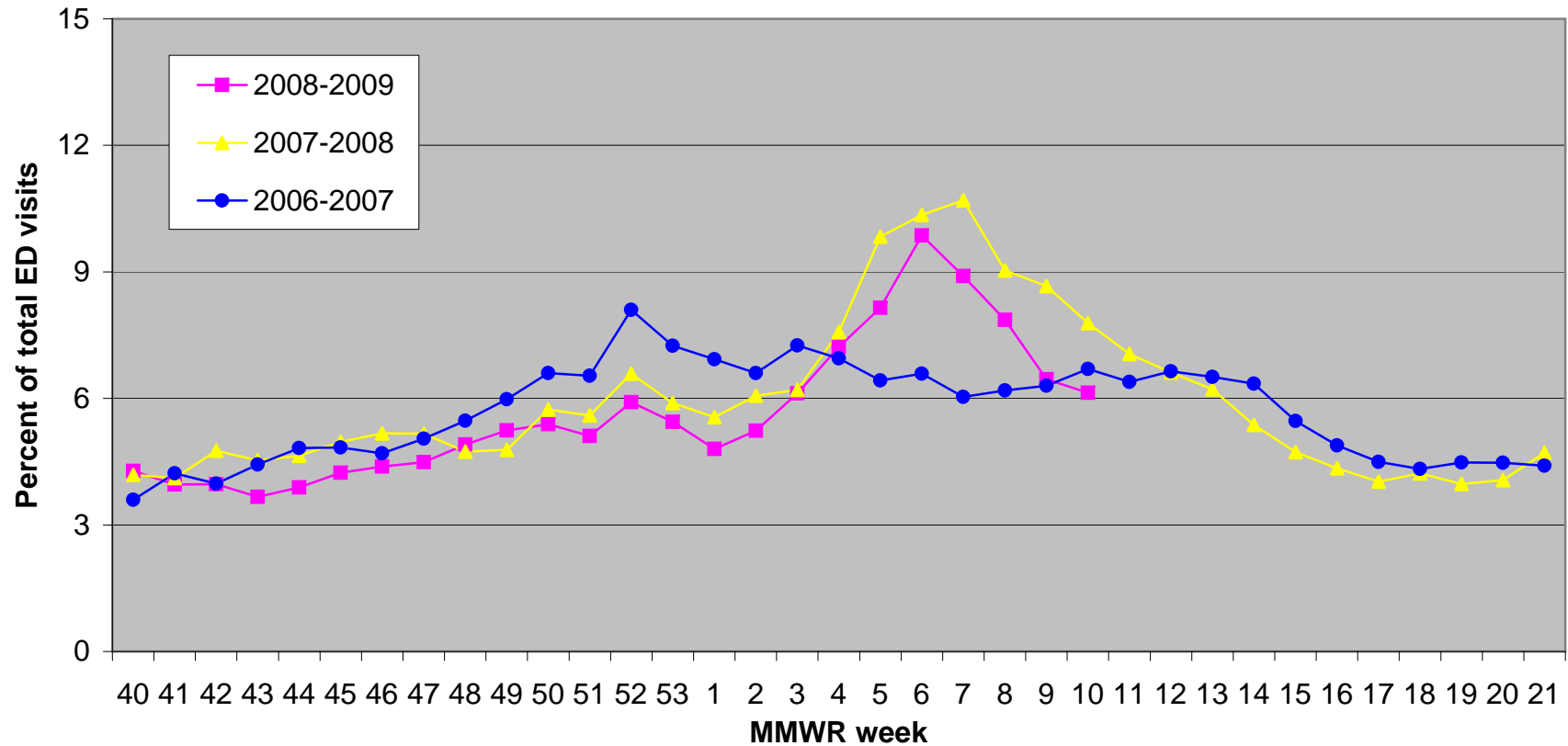


Figure 7. Hospital Admissions Syndromic Surveillance (HASS) System, Connecticut Statewide Pneumonia Admissions by Flu Season; 2005-2009

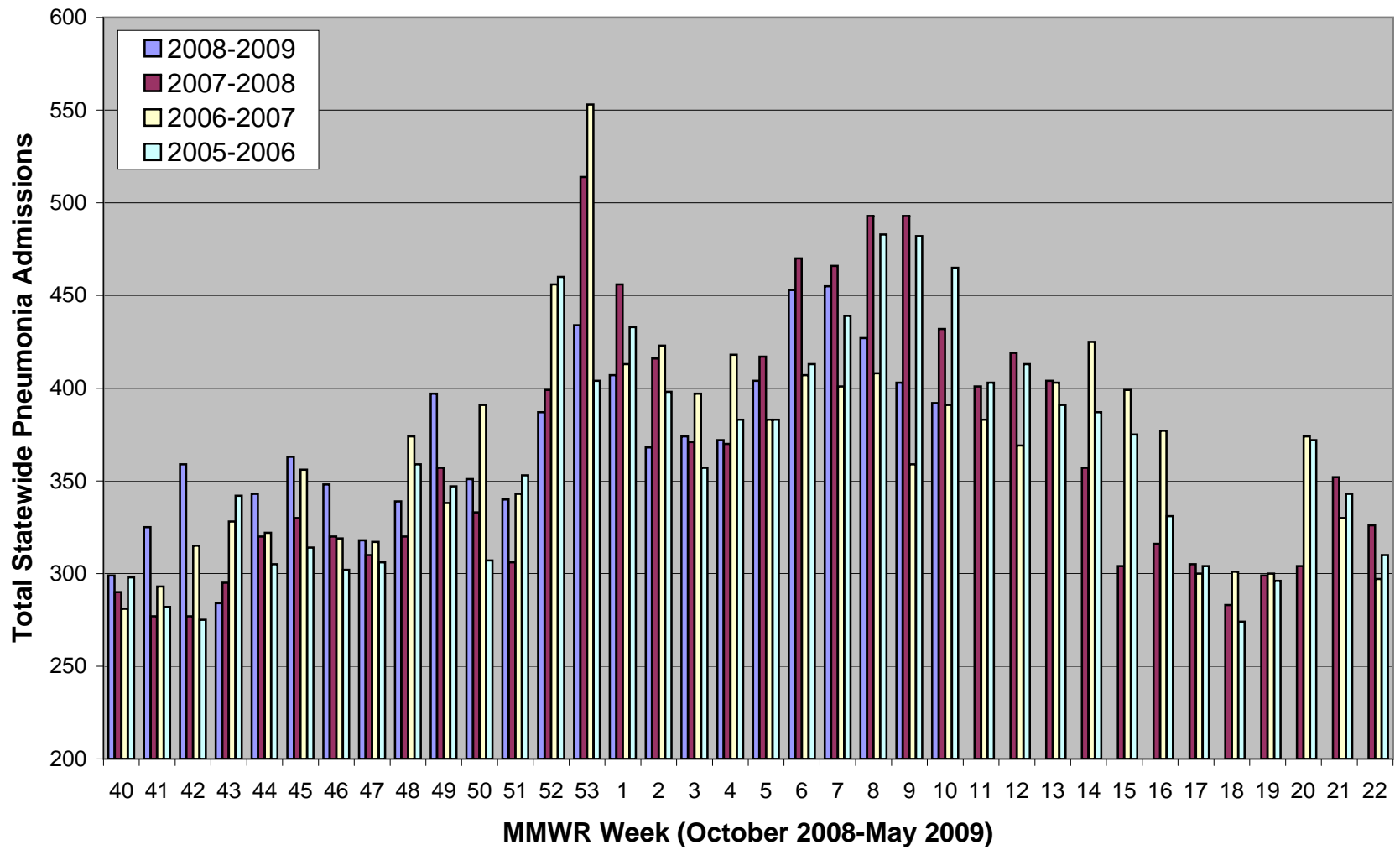


Figure 8. CDC 122 Cities Surveillance: Pneumonia & influenza Deaths in Selected Connecticut Cities, 2007-2008 & 2008-2009 Flu Seasons

