

**STATE OF CONNECTICUT DEPARTMENT OF PUBLIC HEALTH  
PRELIMINARY INFLUENZA ACTIVITY REPORT  
For Week 11 (week ending March 21, 2009)**



Preliminary influenza data reviewed from the week ending March 21<sup>st</sup> revealed that a moderately high, but decreasing, level of flu activity was observed during the 25<sup>th</sup> week of the official 2008-2009 influenza season. These data include a total of 3,796 laboratory confirmed test results from various Connecticut hospitals that reveal the presence of both type A and type B flu viruses, and include reports from all 8 (Fairfield, Hartford, Litchfield, Middlesex, New Haven, New London, Tolland, and Windham) Connecticut counties (see Table 1, Figure 1). Our national flu activity classification remained as “widespread” as a result of the continued high flu activity statewide. The DPH laboratory has culture-confirmed the presence of influenza virus in 298 clinical specimens. Characterization of these isolates reveals the presence of the influenza A (H1N1) subtype in 144 specimens, the influenza A (H3N2) subtype in 60 specimens, an unspecified influenza A isolate in 2 specimens, and influenza B in 92 specimens (see Figure 2). Clinicians should be aware of oseltamivir resistance among many flu A (H1N1) strains. Although influenza activity remains widespread, weekly counts are now below those observed during the equivalent weeks in most of the last 5 seasons (see Figures 3a & 3b).

Six additional indicators of flu activity are being monitored throughout these initial weeks of the 2008-2009 flu season. Information on respiratory outbreaks and laboratory confirmed influenza cases in long-term care facilities are shown in Figure 4. Data on Connecticut residents presenting with influenza-like-illness (ILI) as reported by participants of the United States Outpatient Influenza-like Illness Surveillance Network (ILINet) (formerly known as the U.S. Influenza Sentinel Provider Surveillance Network) are shown in Figure 5. These reporting sites also include participants in the Connecticut Influenza Super Sentinel Surveillance Pilot Project organized this year to provide additional information on outpatient ILI activity.

Data on emergency department visits from our Hospital Emergency Department Syndromic Surveillance (HEDSS) System are also analyzed. One category in particular, fever/flu, has been shown to correlate well with influenza activity (see Figure 6). Patients with more severe illness who are admitted into Connecticut hospitals are tracked by the Connecticut Hospital Admissions Syndromic Surveillance (HASS) System. Data on one category, total statewide pneumonia admissions, correlates with flu activity (see Figure 7). Finally, selected mortality data are monitored each week including pneumonia and influenza deaths from Connecticut cities that participate in the U.S. 122 Cities Mortality Reporting System (see Figure 8), and reports of influenza associated pediatric deaths (none reported to date this flu season). These surveillance systems are providing additional evidence that Connecticut is experiencing a moderately high, but decreasing level of flu activity, as compared with recent influenza seasons.

The CDC has posted its 25<sup>th</sup> national influenza activity map showing one state with initial “sporadic” flu activity, 6 states with “local” flu activity, 19 states with a higher “regional” level of activity, and 24 states with the highest “widespread” level of activity. The most recent CDC weekly influenza activity map can be viewed at: <http://www.cdc.gov/flu/weekly/usmap.htm>

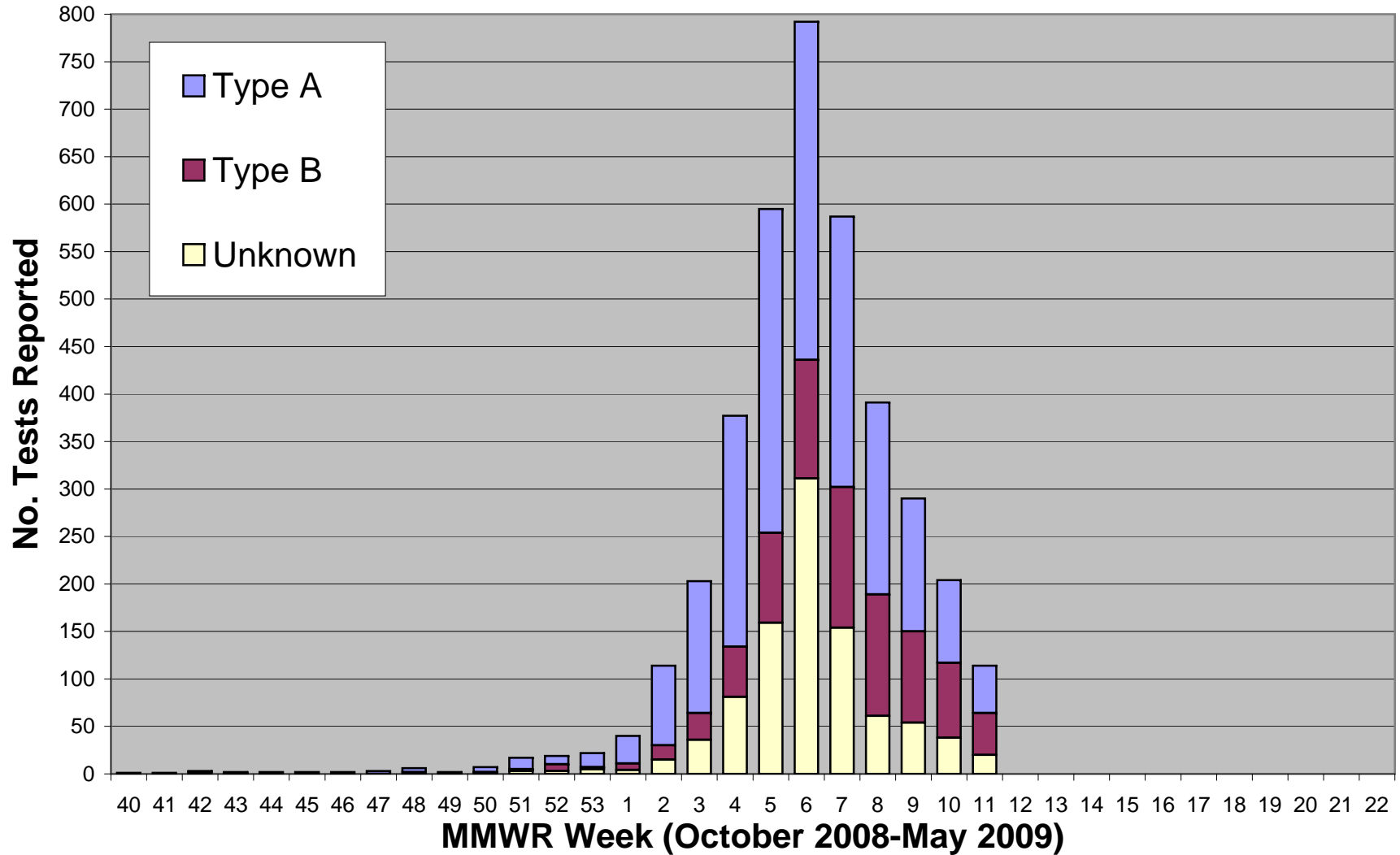
If you have any questions concerning this report, please contact Alan Siniscalchi or Maria Andrews at the Department of Public Health, Epidemiology and Emerging Infections Program, by calling 860-509-7994.

**Table 1: Connecticut Department of Public Health 2008-2009 Laboratory Confirmed Influenza Testing For Week 11 (week ending March 21, 2009)**

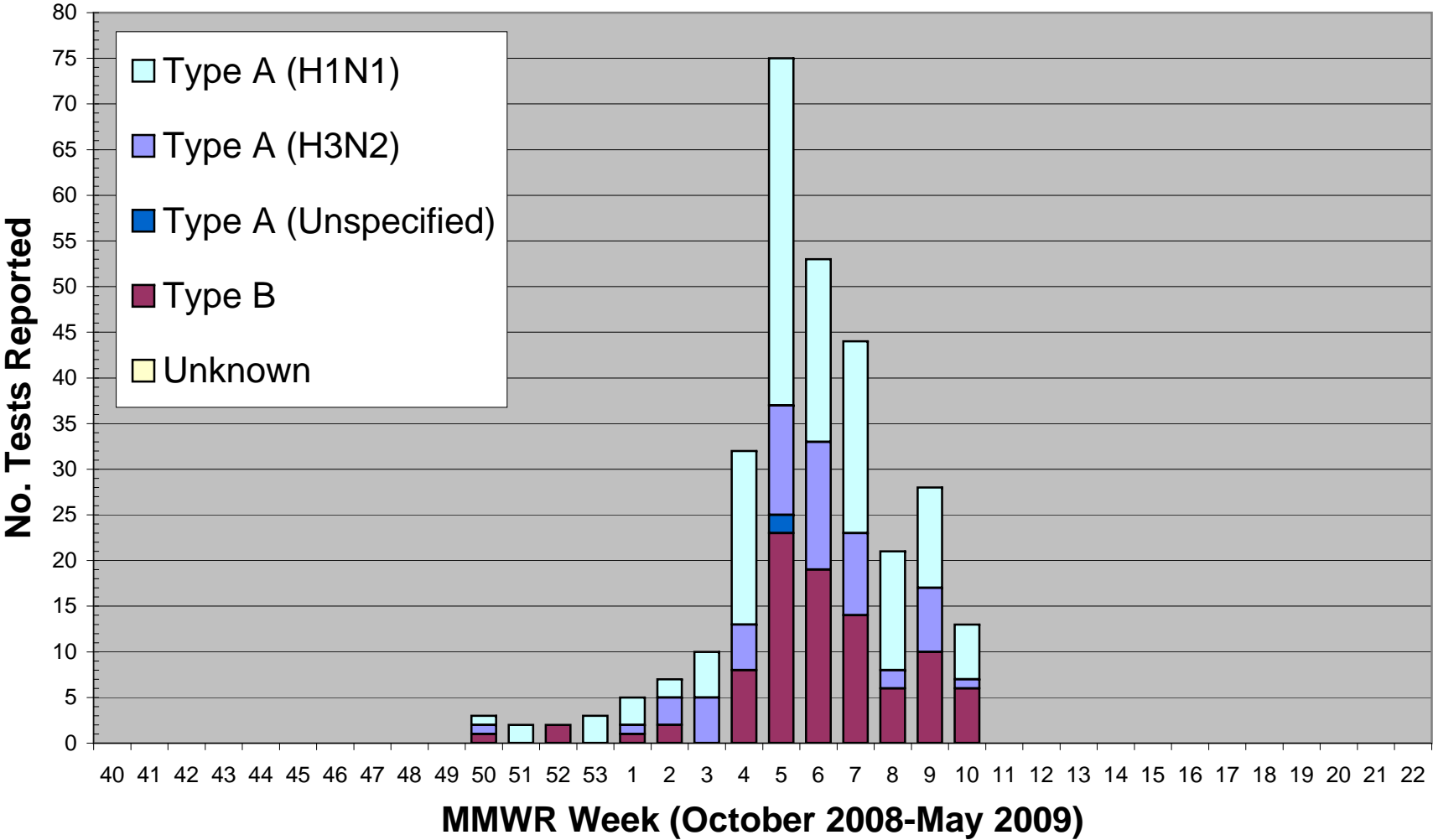
Results by		Previous	New	Total
TEST:	Culture	274	24	298
	Rapid Test	3,389	109	3,498
FLU TYPE:	Type A	1,948	64	2,012
	Type B	790	47	837
	Unknown	925	22	947
COUNTY:	Fairfield	1,337	39	1,376
	Hartford	376	25	401
	Litchfield	163	11	174
	Middlesex	230	6	236
	New Haven	1,226	34	1,260
	New London	111	7	118
	Tolland	95	7	102
	Windham	125	4	129
	GENDER:	Female	1,904	74
	Male	1,759	59	1,818
<b>Total</b>		<b>3,663</b>	<b>133</b>	<b>3,796</b>

Age:	Previous	New	Total	Week	Dates - 2009	Total
0-4	428	22	450	1	January 4 - 10	40
5-24	2,056	72	2,128	2	January 11-17	114
25-64	982	35	1,017	3	January 18-24	203
≥65	197	4	201	4	January 25-31	377
Age Range: <1 – 101 Average Age: 22.4				5	February 1-7	595
				6	February 8-14	792
				7	February 15-21	587
				8	February 22-28	391
				9	March 1-7	290
				10	March 8-14	204
				11	March 15-21	114
				12	March 22-28	
				13	March 29- April 4	
				14	April 5-11	
				15	April 12-18	
				16	April 19-25	
				17	April 26- May 2	
				18	May 3- 9	
				19	May 10-16	
				20	May 17-23	
				21	May 24-30	
				22	May 31- June 6	
				23		
				24		
				25		
				26		
				27		
				28		
				29		
				30		
				31		
				32		
				33		
				34		
				35		
				36		
				37		
				38		
				39		
				40		
				41		
				42		
				43		
				44		
				45		
				46		
				47		
				48		
				49		
				50		
				51		
				52		
				53		

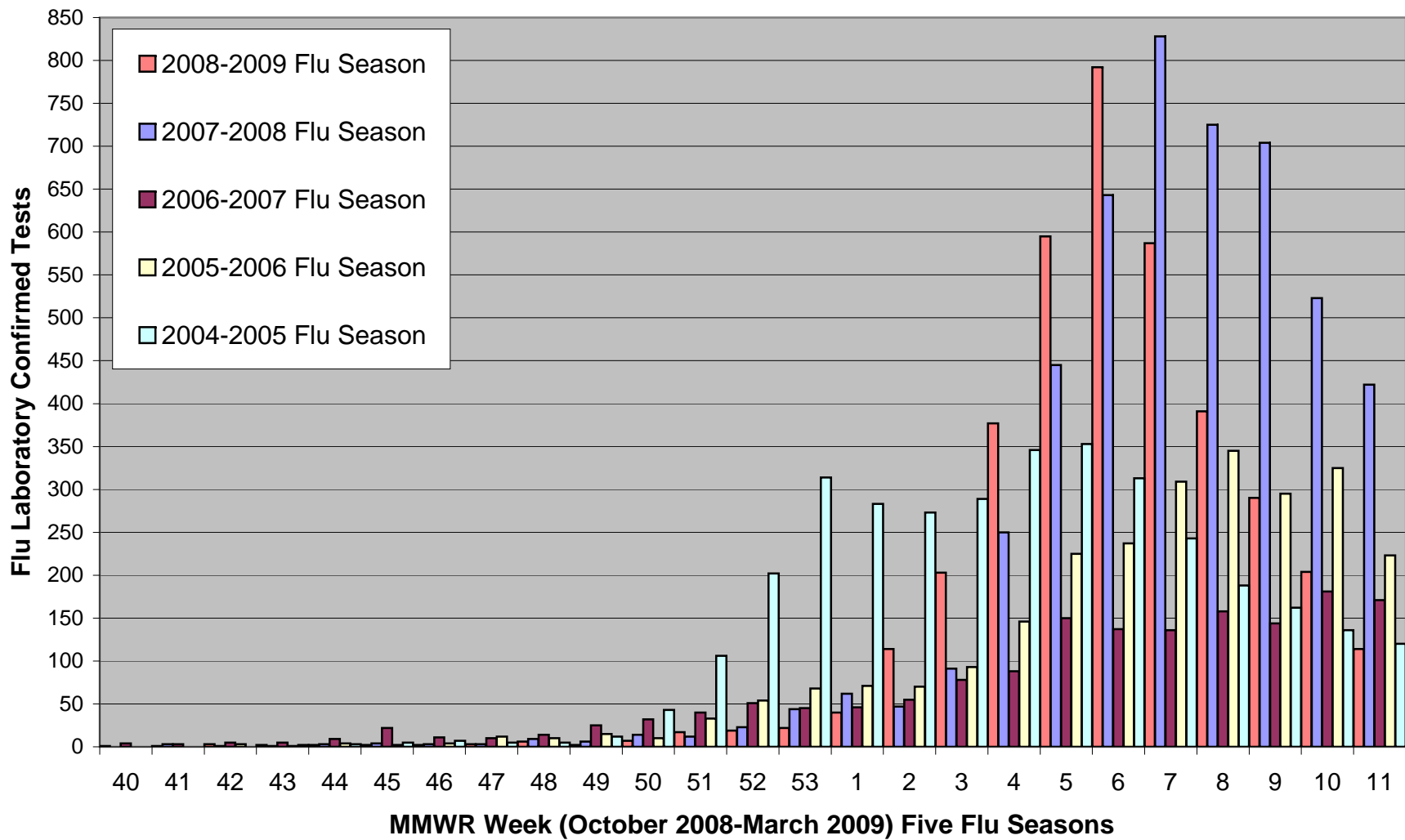
**Figure 1. Laboratory Confirmed Tests by Flu Type, Connecticut, 2008-2009 Influenza Season**



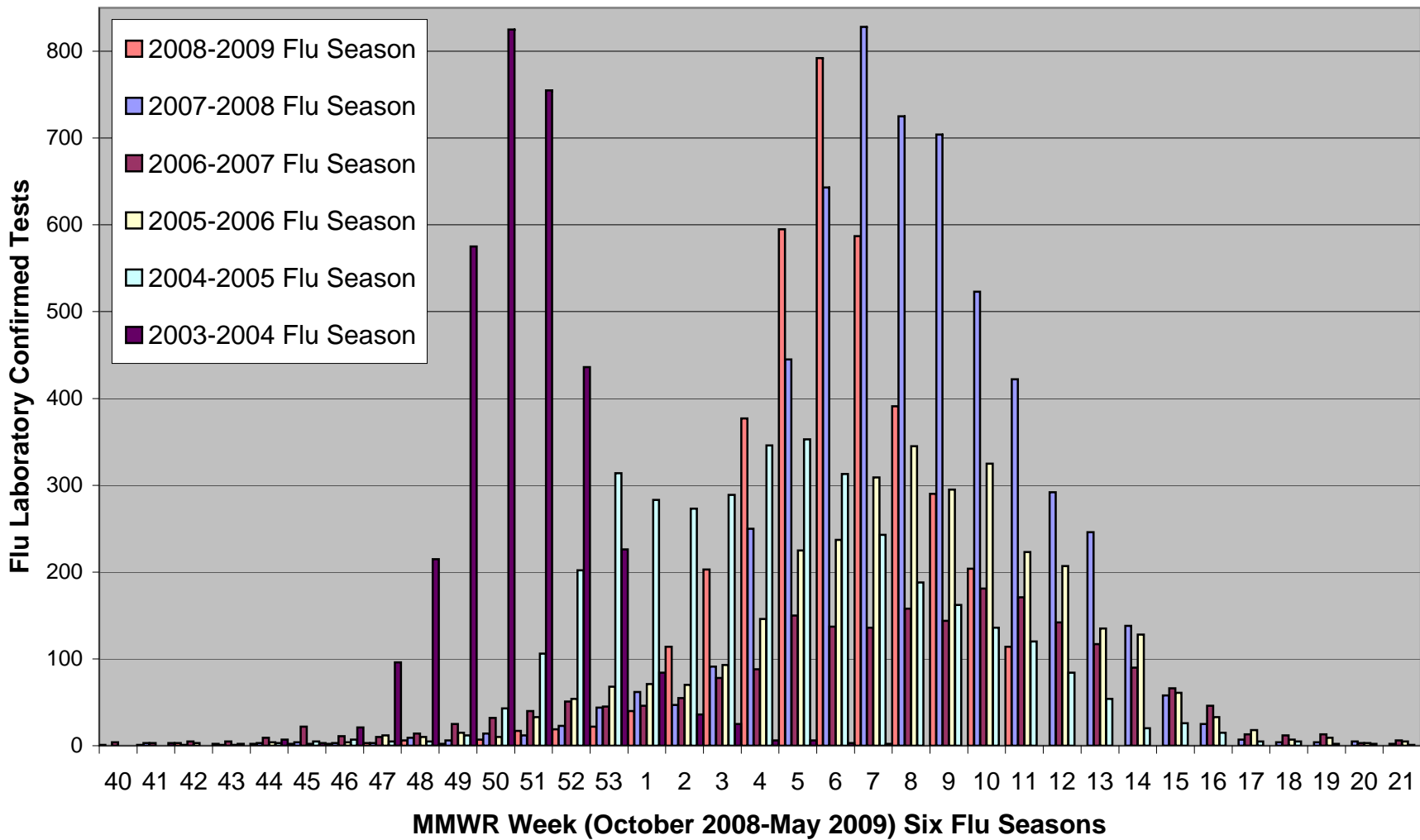
**Figure 2. Department of Public Health Laboratory Culture  
Confirmed Tests by Flu Type,  
Connecticut, 2008-2009 Flu Season**



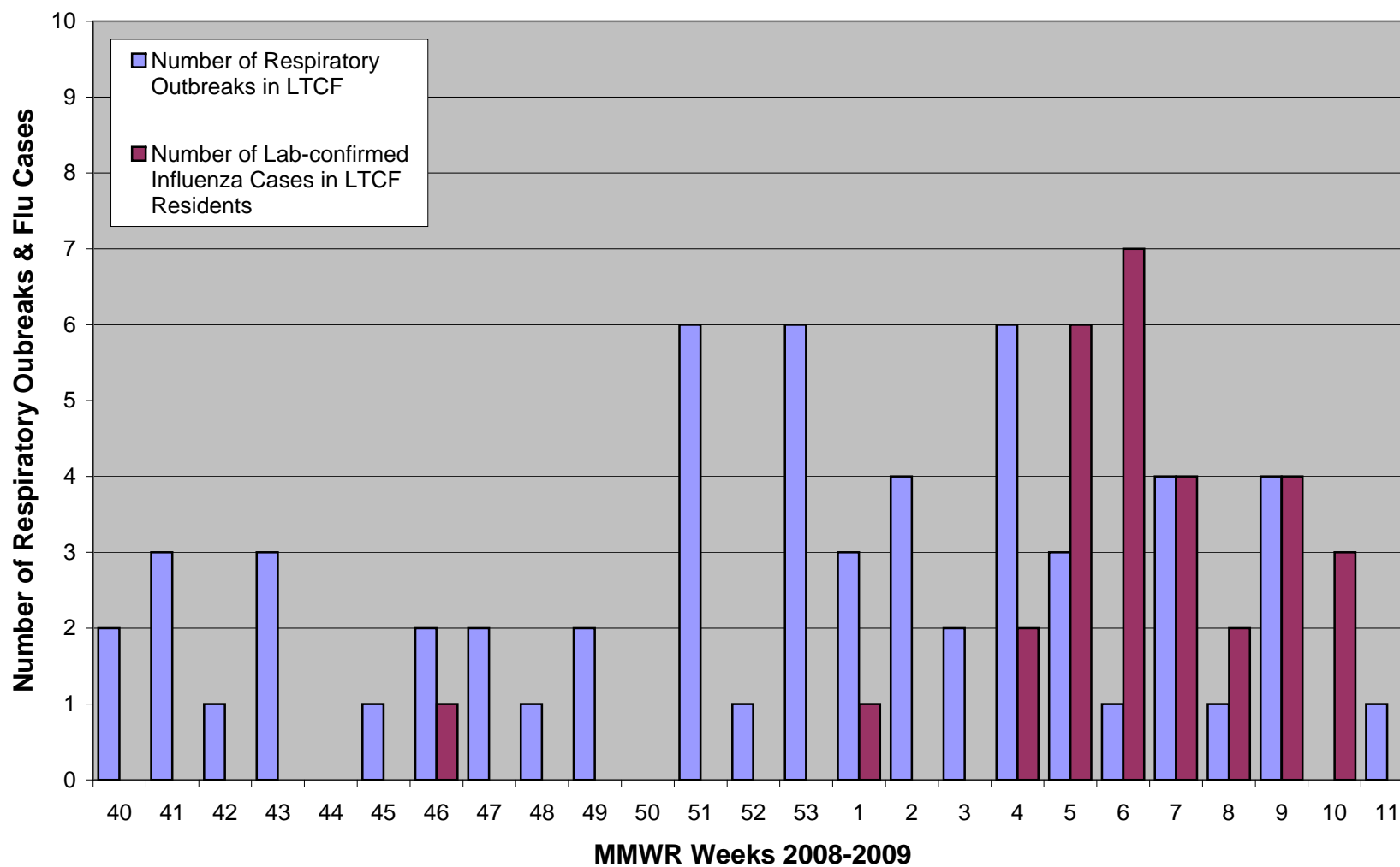
**Figure 3a. Laboratory Confirmed Tests by Flu Season  
Connecticut, 2004-2009**



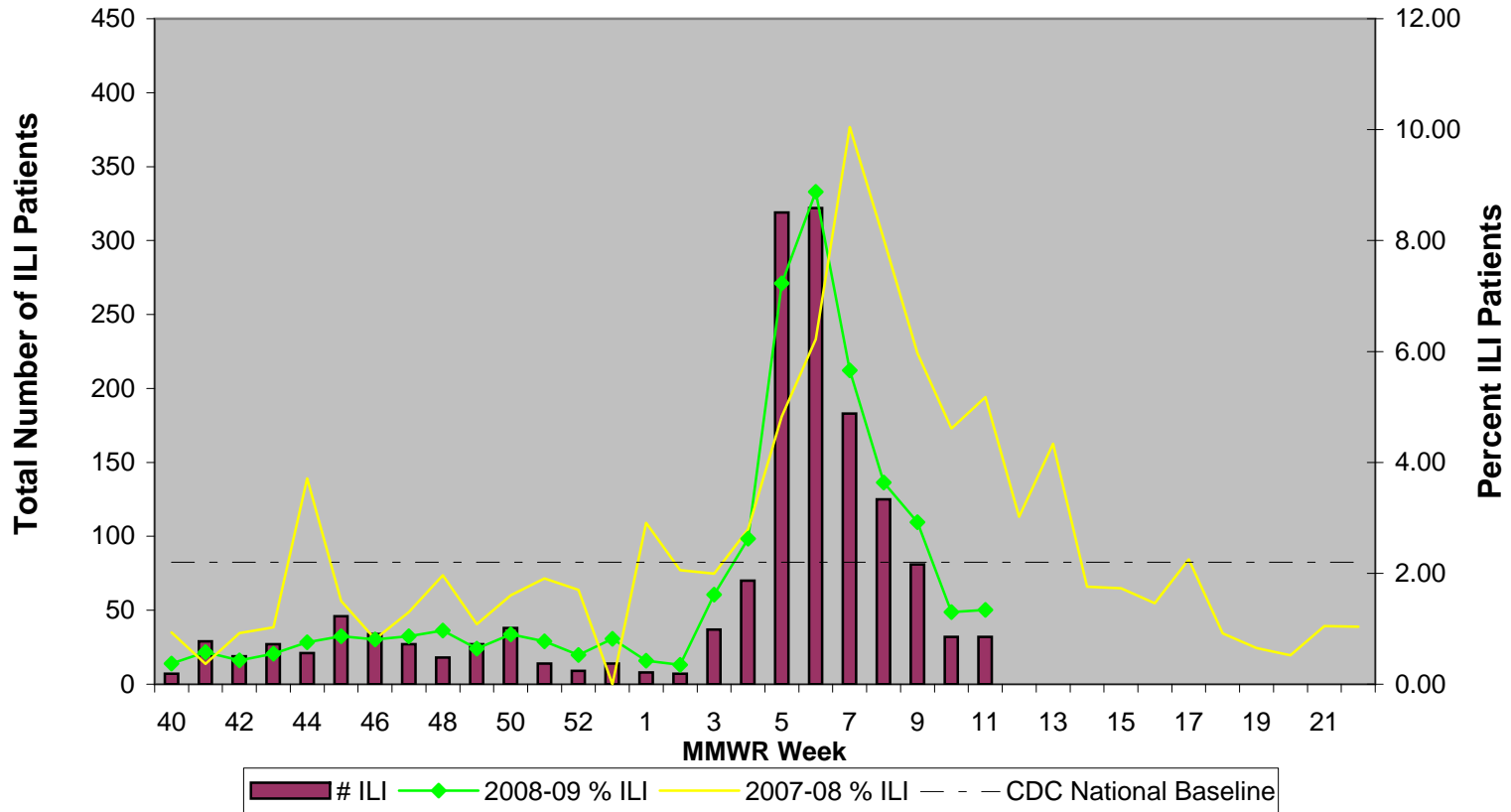
**Figure 3b. Laboratory Confirmed Tests by Flu Season  
Connecticut, 2003-2009**



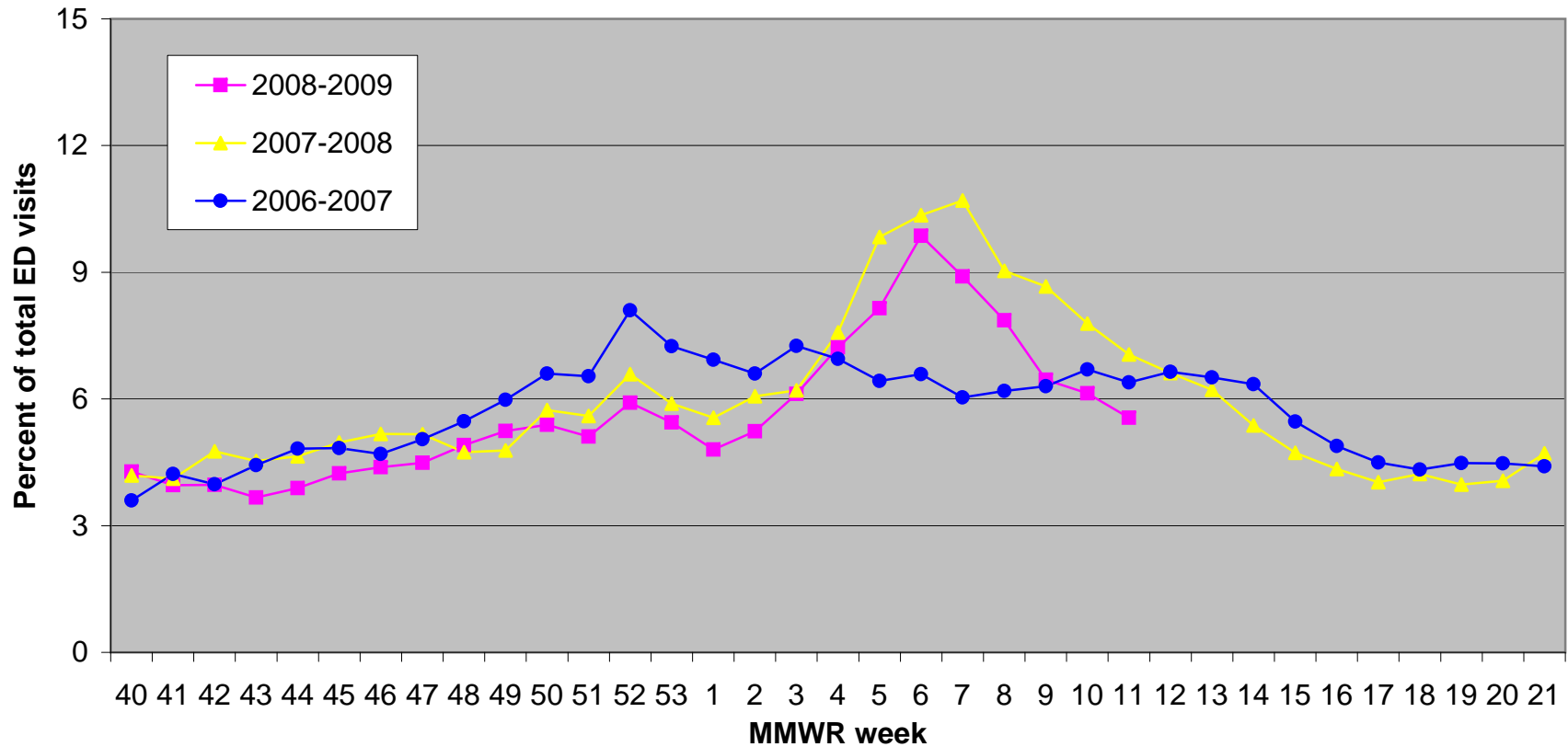
**Figure 4. Respiratory Outbreaks & Influenza in Long-term Care Facilities (LTCF), Connecticut, 2008-2009 Influenza Season**



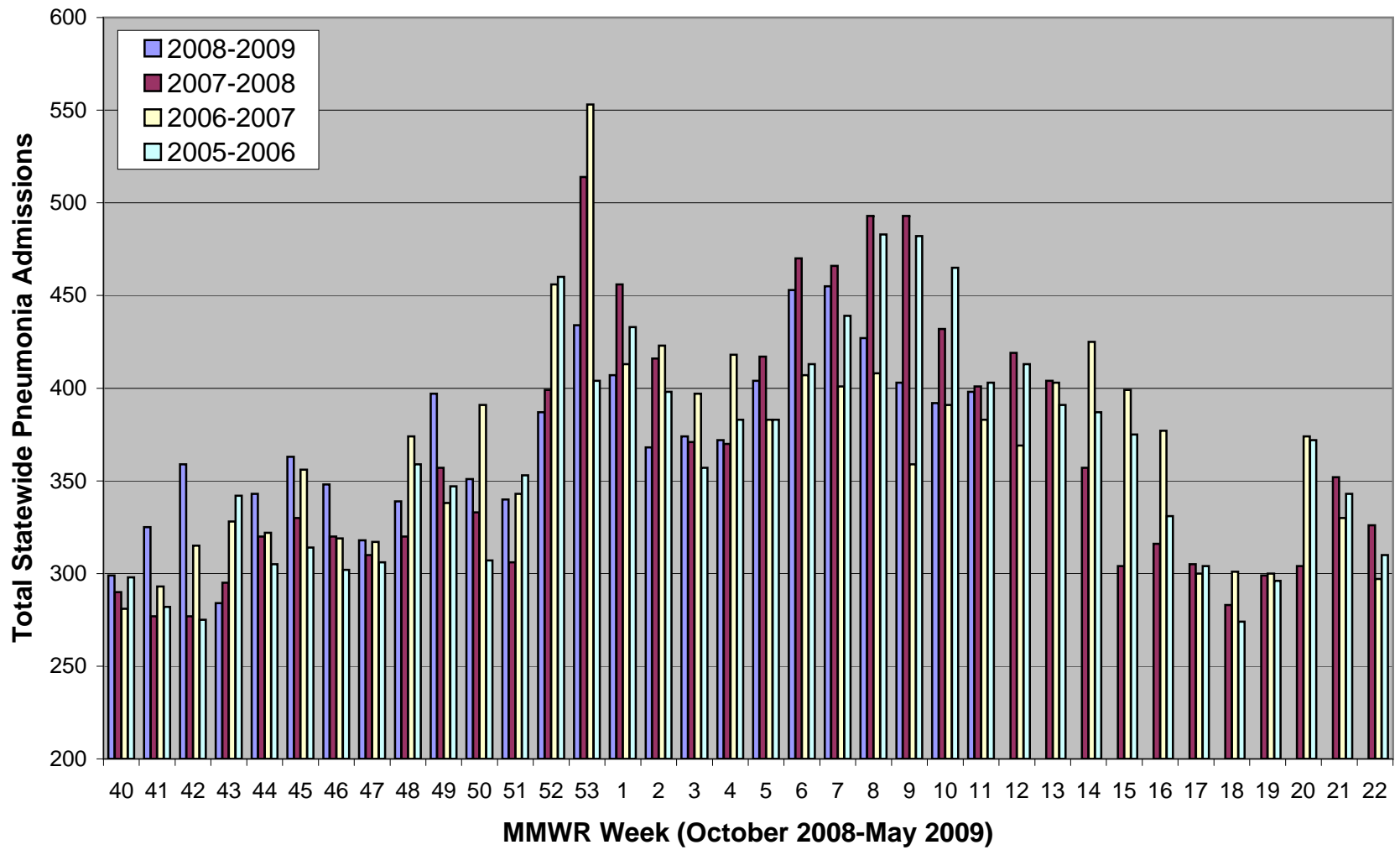
**Figure 5. Outpatient Influenza-Like Illness Surveillance Network (ILINet),  
Statewide Visits of Patients with Influenza-Like Illness (ILI), Connecticut,  
2007-2009**



**Figure 6. Hospital Emergency Department Syndromic Surveillance (HEDSS) System, Statewide "Fever/Flu" Visits by Flu Season, Connecticut, 2006-2009**



**Figure 7. Hospital Admissions Syndromic Surveillance (HASS) System, Connecticut Statewide Pneumonia Admissions by Flu Season; 2005-2009**



**Figure 8. CDC 122 Cities Surveillance: Pneumonia & influenza Deaths in Selected Connecticut Cities, 2007-2008 & 2008-2009 Flu Seasons**

