

**STATE OF CONNECTICUT DEPARTMENT OF PUBLIC HEALTH
PRELIMINARY INFLUENZA ACTIVITY REPORT
For Week 12 (week ending March 28, 2009)**



Preliminary influenza data reviewed from the week ending March 28th revealed that a moderate, but decreasing, level of flu activity was observed during the 26th week of the official 2008-2009 influenza season. These data include a total of 3,878 laboratory confirmed test results from various Connecticut hospitals that reveal the presence of both type A and type B flu viruses, and include reports from all 8 (Fairfield, Hartford, Litchfield, Middlesex, New Haven, New London, Tolland, and Windham) Connecticut counties (see Table 1, Figure 1). Our national flu activity classification changed from “widespread” to “regional” as a result of the decreasing flu activity statewide. The DPH laboratory has culture-confirmed the presence of influenza virus in 312 clinical specimens. Characterization of these isolates reveals the presence of the influenza A (H1N1) subtype in 154 specimens, the influenza A (H3N2) subtype in 61 specimens, an unspecified influenza A isolate in 2 specimens, and influenza B in 95 specimens (see Figure 2). Clinicians should be aware of oseltamivir resistance among many flu A (H1N1) strains. While influenza activity is still present in all counties, weekly counts are now below those observed during the equivalent weeks in most of the last 5 seasons (see Figures 3a & 3b).

Six additional indicators of flu activity are being monitored throughout these initial weeks of the 2008-2009 flu season. Information on respiratory outbreaks and laboratory confirmed influenza cases in long-term care facilities are shown in Figure 4. Data on Connecticut residents presenting with influenza-like-illness (ILI) as reported by participants of the United States Outpatient Influenza-like Illness Surveillance Network (ILINet) (formerly known as the U.S. Influenza Sentinel Provider Surveillance Network) are shown in Figure 5. These reporting sites also include participants in the Connecticut Influenza Super Sentinel Surveillance Pilot Project organized this year to provide additional information on outpatient ILI activity.

Data on emergency department visits from our Hospital Emergency Department Syndromic Surveillance (HEDSS) System are also analyzed. One category in particular, fever/flu, has been shown to correlate well with influenza activity (see Figure 6). Patients with more severe illness who are admitted into Connecticut hospitals are tracked by the Connecticut Hospital Admissions Syndromic Surveillance (HASS) System. Data on one category, total statewide pneumonia admissions, correlates with flu activity (see Figure 7). Finally, selected mortality data are monitored each week including pneumonia and influenza deaths from Connecticut cities that participate in the U.S. 122 Cities Mortality Reporting System (see Figure 8), and reports of influenza associated pediatric deaths (none reported to date this flu season). These surveillance systems are providing additional evidence that Connecticut is experiencing a moderate, but decreasing level of flu activity, as compared with recent influenza seasons.

The CDC has posted its 26th national influenza activity map showing 3 states with initial “sporadic” flu activity, 14 states with “local” flu activity, 19 states with a higher “regional” level of activity, and 13 states with the highest “widespread” level of activity. The most recent CDC weekly influenza activity map can be viewed at: <http://www.cdc.gov/flu/weekly/usmap.htm>

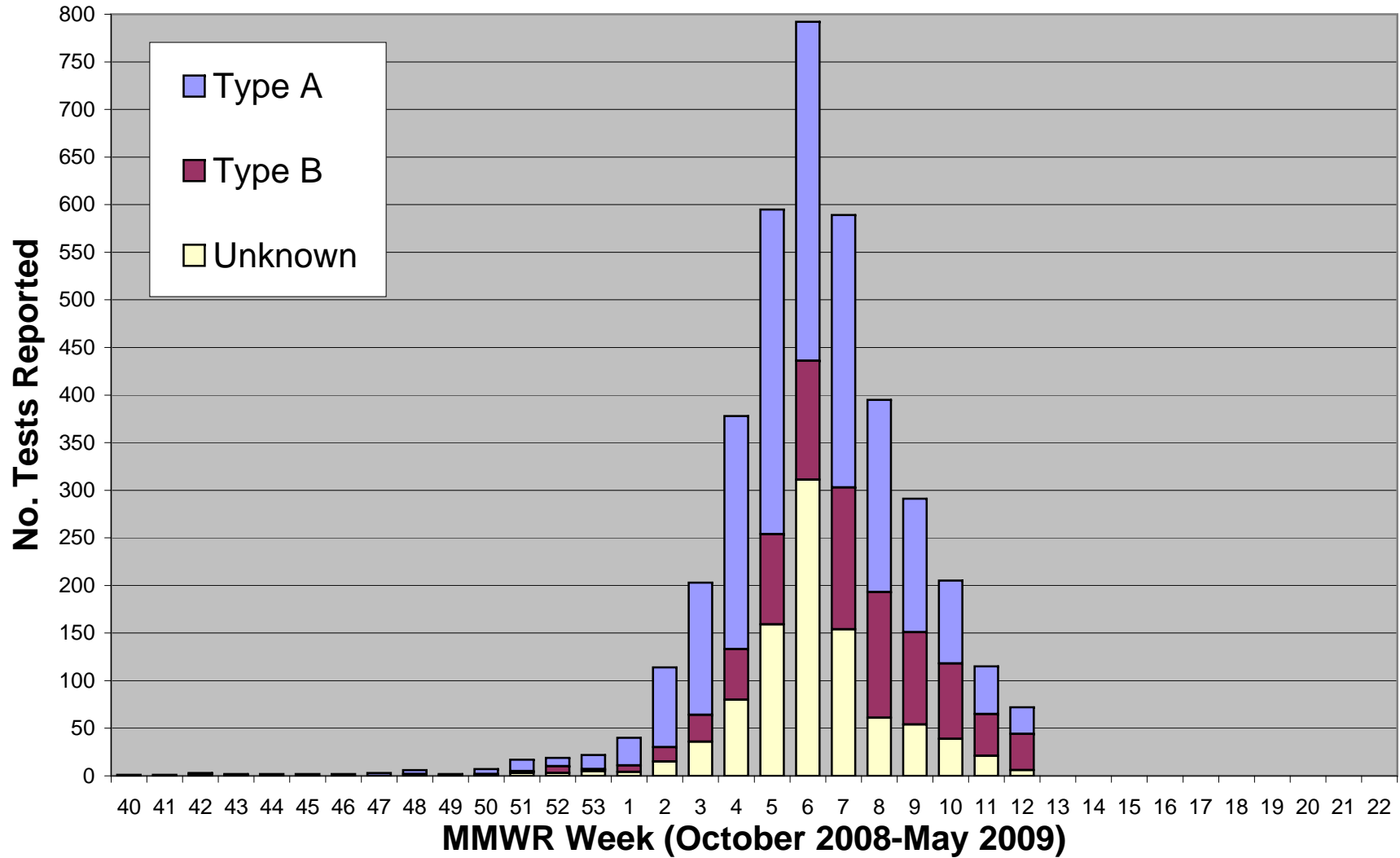
If you have any questions concerning this report, please contact Alan Siniscalchi or Maria Andrews at the Department of Public Health, Epidemiology and Emerging Infections Program, by calling 860-509-7994.

TABLE 1: Connecticut Department of Public Health 2008-2009 Laboratory Confirmed Influenza Testing For Week 12 (week ending March 28, 2009)

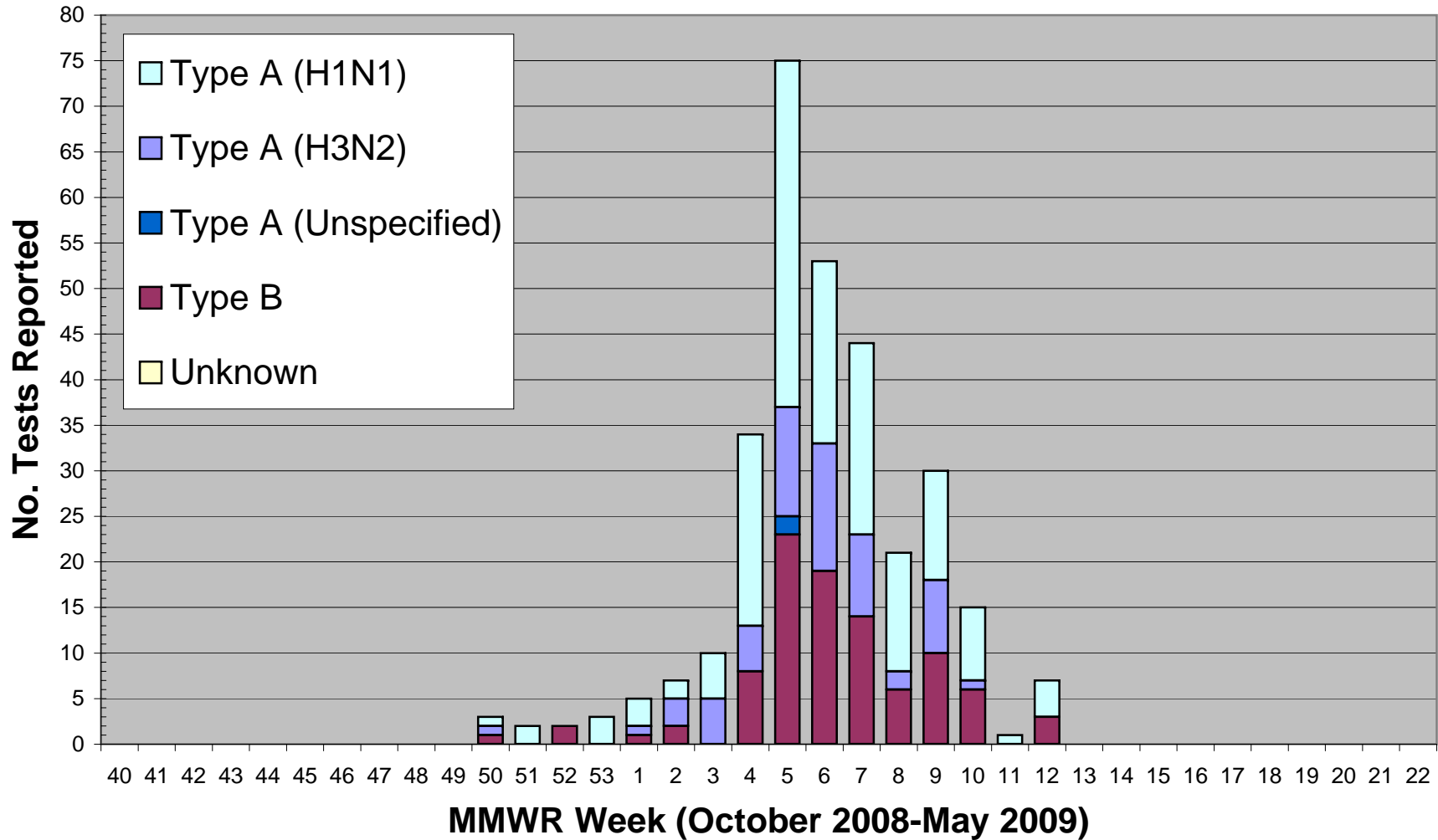
Results by		Previous	New	Total
TEST:	Culture	298	14	312
	Rapid Test	3,498	68	3,566
FLU TYPE:	Type A	2,013	30	2,043
	Type B	837	44	881
	Unknown	946	8	954
COUNTY:	Fairfield	1,376	18	1,394
	Hartford	401	9	410
	Litchfield	174	8	182
	Middlesex	236	9	245
	New Haven	1,260	25	1,285
	New London	118	3	121
	Tolland	102	3	105
	Windham	129	7	136
GENDER:	Female	1,978	39	2,017
	Male	1,818	43	1,861
Total		3,796	82	3,878

Age:	Previous	New	Total	Week	Dates - 2009	Total
0-4	450	11	461	1	January 4 - 10	40
5-24	2,128	43	2,171	2	January 11-17	114
25-64	1,017	22	1,039	3	January 18-24	203
≥65	201	6	207	4	January 25-31	378
Age Range: <1 – 101 Average Age: 22.4				5	February 1-7	595
				6	February 8-14	792
				7	February 15-21	589
				8	February 22-28	395
				9	March 1-7	291
				10	March 8-14	205
				11	March 15-21	115
				12	March 22-28	72
				13	March 29- April 4	
				14	April 5-11	
				15	April 12-18	
				16	April 19-25	
				17	April 26- May 2	
				18	May 3- 9	
				19	May 10-16	
				20	May 17-23	
				21	May 24-30	
				22	May 31- June 6	
Week	Dates - 2008	Total				
40	Sept. 28 - Oct. 4	1				
41	October 5-11	1				
42	October 12-18	3				
43	October 19-25	2				
44	Oct. 26 - Nov. 1	2				
45	November 2-8	2				
46	November 9-15	2				
47	November 16-22	3				
48	November 23 -29	6				
49	Nov. 30 – Dec. 6	2				
50	December 7-13	7				
51	December 14-20	17				
52	December 21-27	19				
53	Dec. 28- Jan. 3	22				

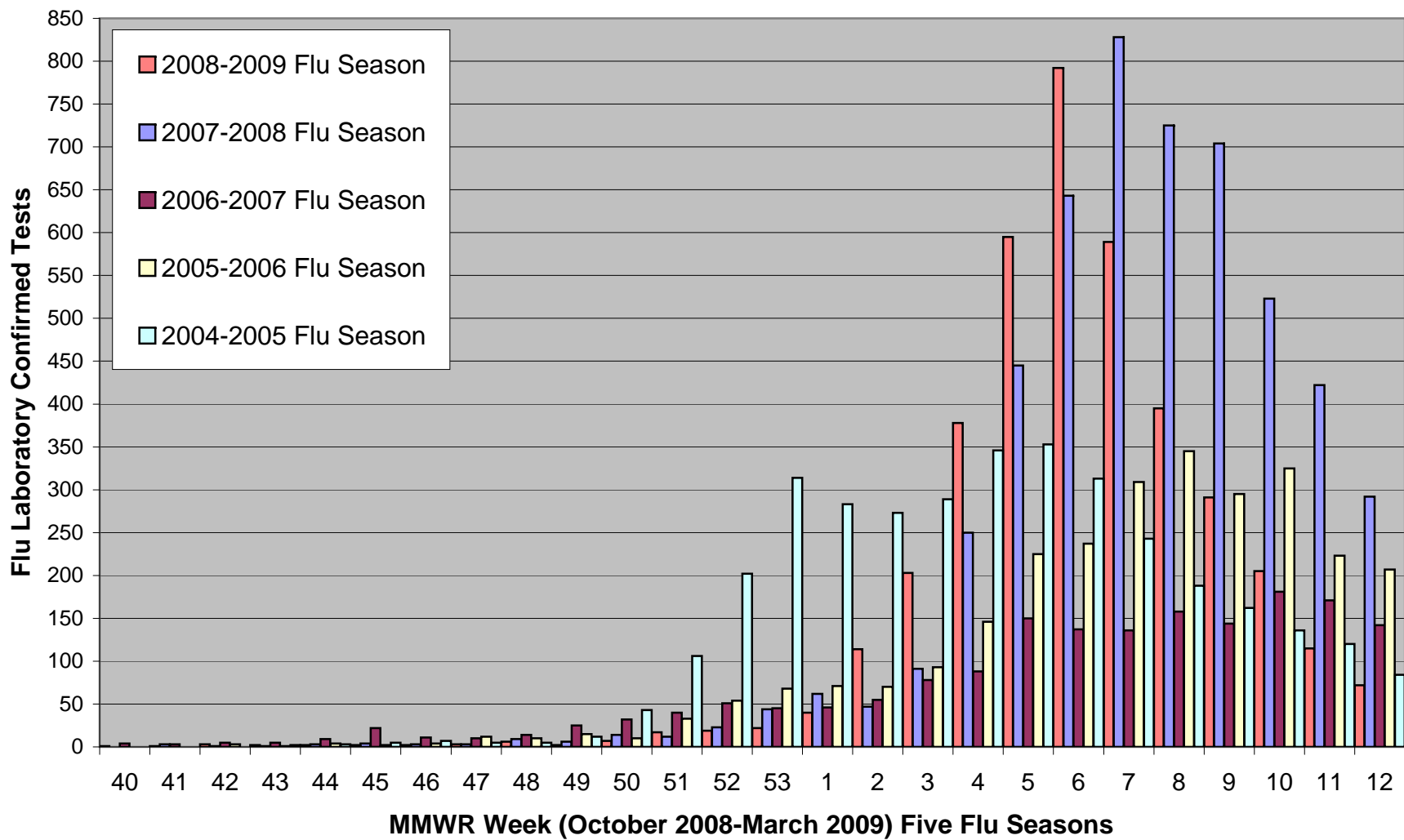
Figure 1. Laboratory Confirmed Tests by Flu Type, Connecticut, 2008-2009 Influenza Season



**Figure 2. Department of Public Health Laboratory Culture
Confirmed Tests by Flu Type,
Connecticut, 2008-2009 Flu Season**



**Figure 3a. Laboratory Confirmed Tests by Flu Season
Connecticut, 2004-2009**



**Figure 3b. Laboratory Confirmed Tests by Flu Season
Connecticut, 2003-2009**

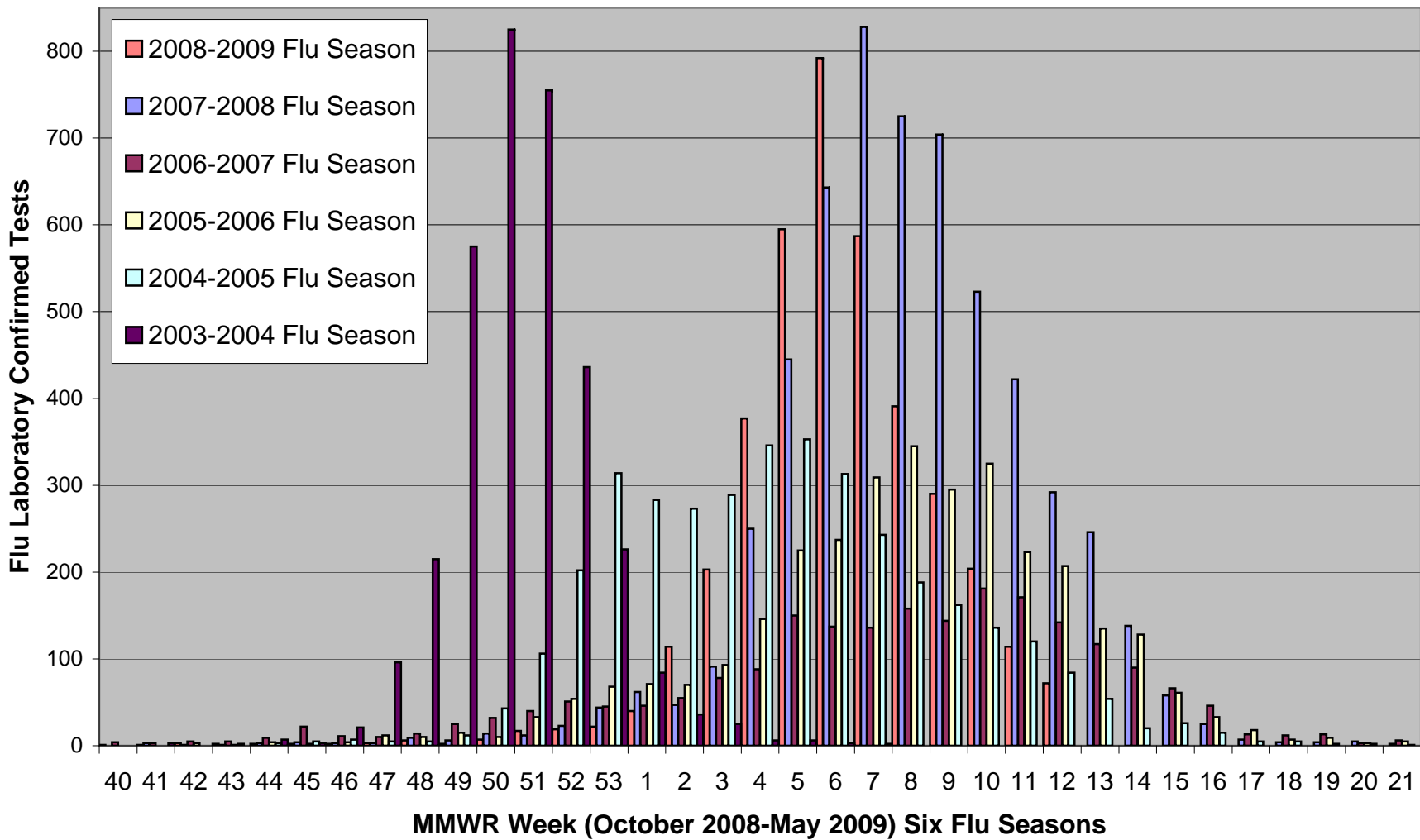
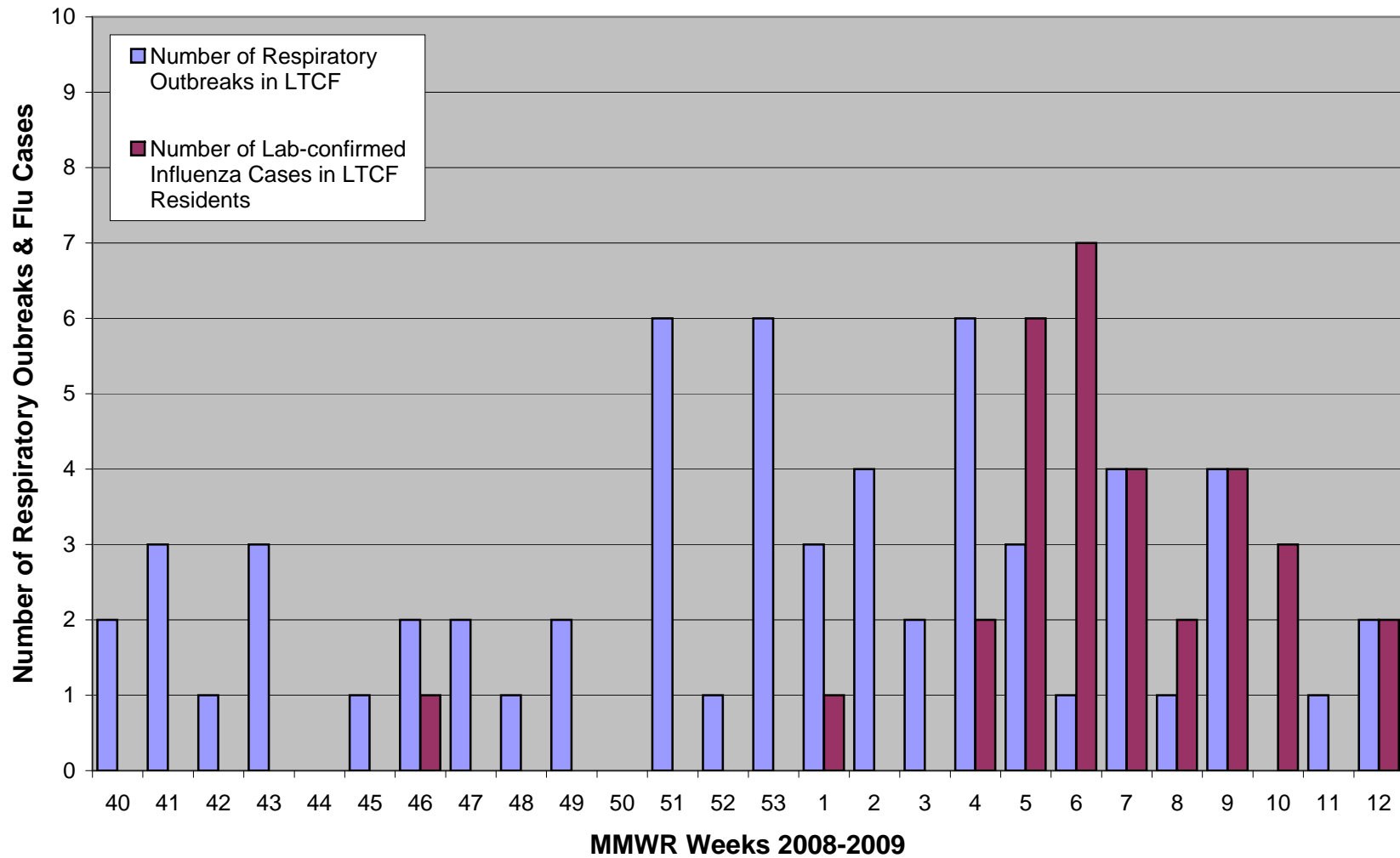


Figure 4. Respiratory Outbreaks & Influenza in Long-term Care Facilities (LTCF), Connecticut, 2008-2009 Influenza Season



**Figure 5. Outpatient Influenza-Like Illness Surveillance Network (ILINet),
Statewide Visits of Patients with Influenza-Like Illness (ILI), Connecticut,
2007-2009**

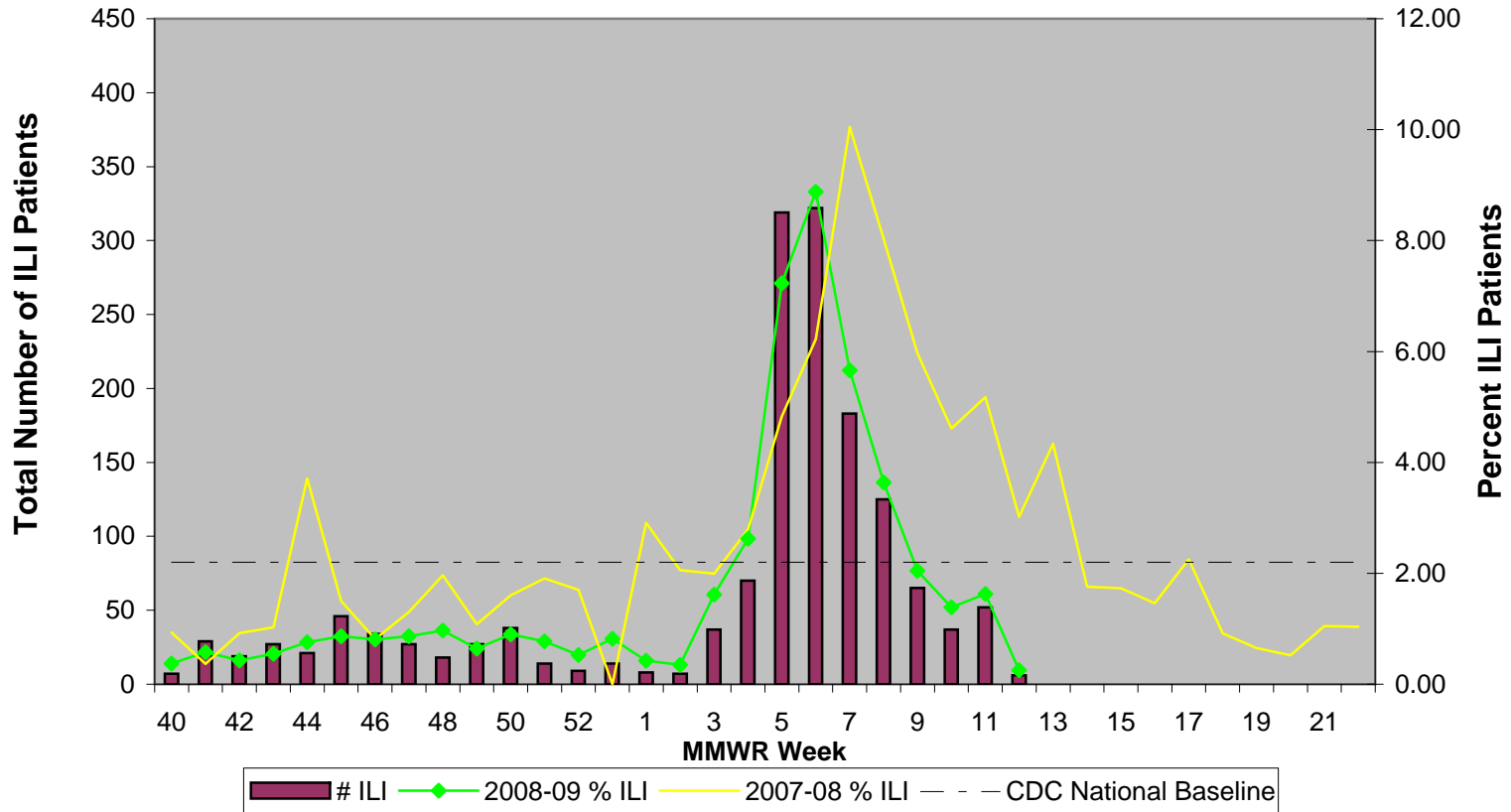


Figure 6. Hospital Emergency Department Syndromic Surveillance (HEDSS) System, Statewide "Fever/Flu" Visits by Flu Season, Connecticut, 2006-2009

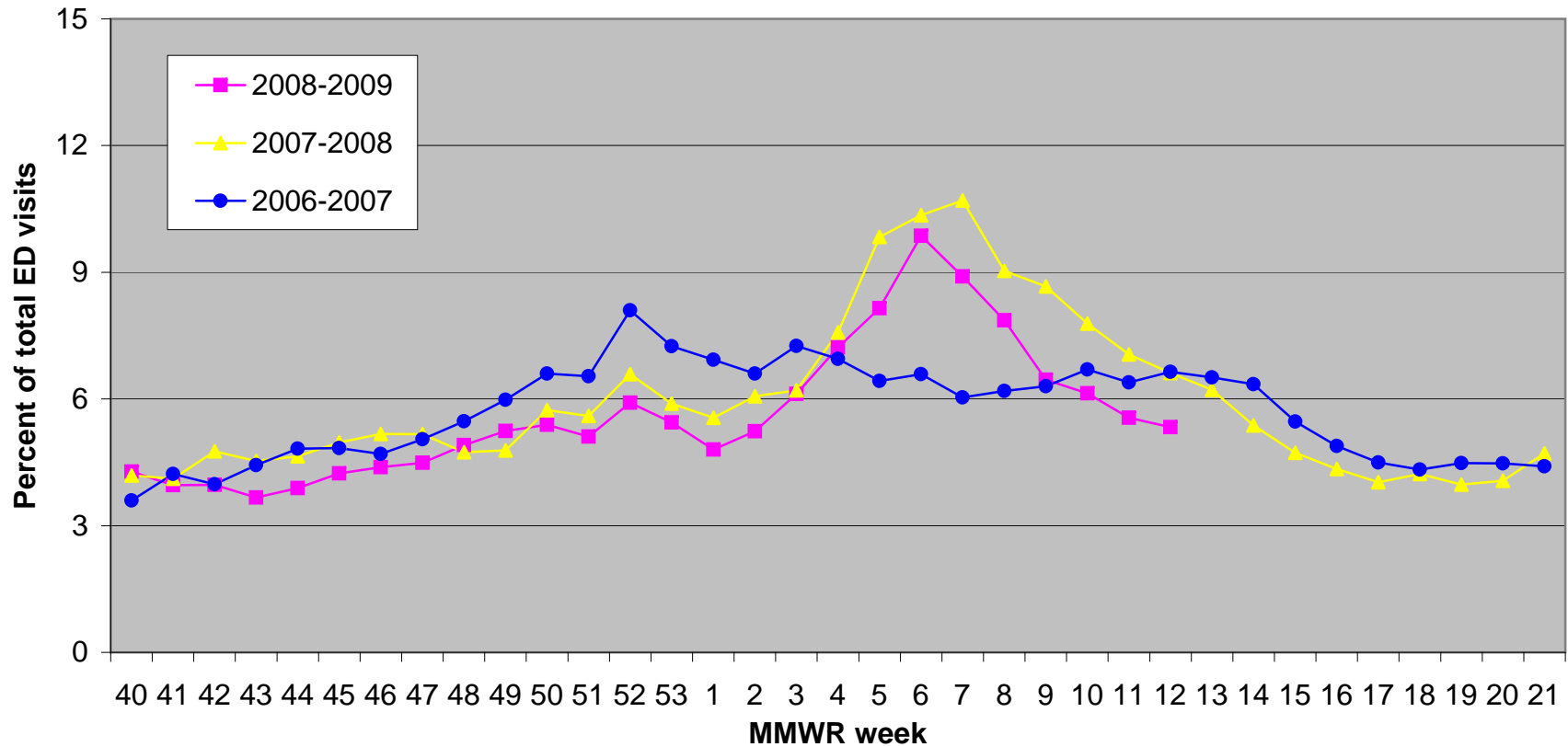


Figure 7. Hospital Admissions Syndromic Surveillance (HASS) System, Connecticut Statewide Pneumonia Admissions by Flu Season; 2005-2009

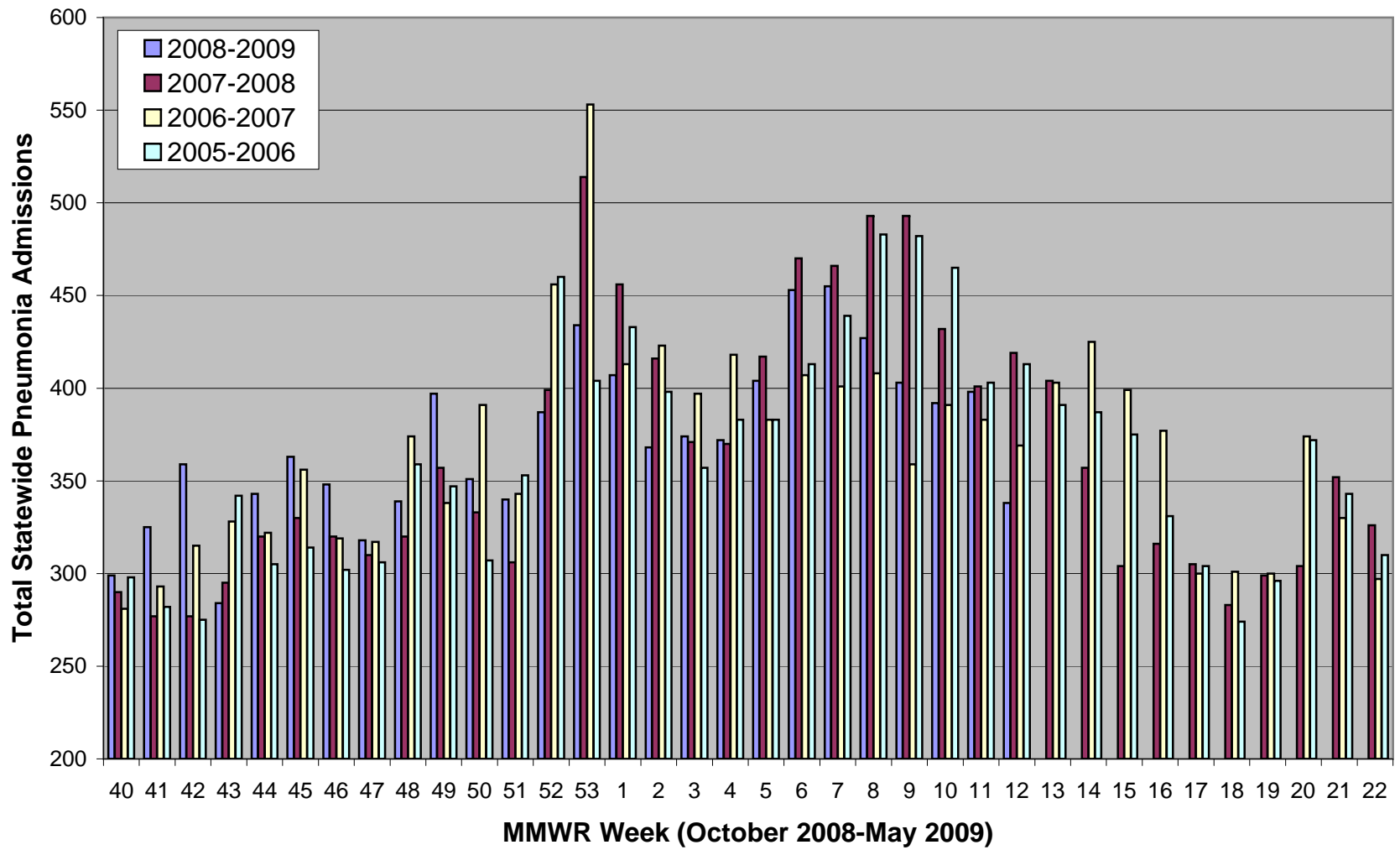


Figure 8. CDC 122 Cities Surveillance: Pneumonia & influenza Deaths in Selected Connecticut Cities, 2007-2008 & 2008-2009 Flu Seasons

