

**STATE OF CONNECTICUT DEPARTMENT OF PUBLIC HEALTH
PRELIMINARY INFLUENZA ACTIVITY REPORT
For Week 13 (week ending April 4, 2009)**



Preliminary influenza data reviewed from the week ending April 4th revealed that a rapidly decreasing level of flu activity was observed during the 27th week of the official 2008-2009 influenza season. These data include a total of 3,953 laboratory confirmed test results from various Connecticut hospitals that reveal the presence of both type A and type B flu viruses, and include reports from all 8 (Fairfield, Hartford, Litchfield, Middlesex, New Haven, New London, Tolland, and Windham) Connecticut counties (see Table 1, Figure 1). Our national flu activity classification continued as “regional” as a result of the moderate level of flu activity remaining in two counties. The DPH laboratory has culture-confirmed the presence of influenza virus in 340 clinical specimens. Characterization of these isolates reveals the presence of the influenza A (H1N1) subtype in 164 specimens, the influenza A (H3N2) subtype in 66 specimens, an unspecified influenza A isolate in 2 specimens, and influenza B in 108 specimens (see Figure 2). Clinicians should be aware of oseltamivir resistance among flu A (H1N1) strains. While influenza activity is still present statewide, weekly counts continue to be below those observed during the equivalent weeks in most of the last 5 seasons (see Figures 3a & 3b).

Six additional indicators of flu activity are being monitored throughout these initial weeks of the 2008-2009 flu season. Information on respiratory outbreaks and laboratory confirmed influenza cases in long-term care facilities are shown in Figure 4. Data on Connecticut residents presenting with influenza-like-illness (ILI) as reported by participants of the United States Outpatient Influenza-like Illness Surveillance Network (ILINet) (formerly known as the U.S. Influenza Sentinel Provider Surveillance Network) are shown in Figure 5. These reporting sites also include participants in the Connecticut Influenza Super Sentinel Surveillance Pilot Project organized this year to provide additional information on outpatient ILI activity.

Data on emergency department visits from our Hospital Emergency Department Syndromic Surveillance (HEDSS) System are also analyzed. One category in particular, fever/flu, has been shown to correlate well with influenza activity (see Figure 6). Patients with more severe illness who are admitted into Connecticut hospitals are tracked by the Connecticut Hospital Admissions Syndromic Surveillance (HASS) System. Data on one category, total statewide pneumonia admissions, correlates with flu activity (see Figure 7). Finally, selected mortality data are monitored each week including pneumonia and influenza deaths from Connecticut cities that participate in the U.S. 122 Cities Mortality Reporting System (see Figure 8), and reports of influenza associated pediatric deaths (none reported to date this flu season). These surveillance systems are providing additional evidence that Connecticut is experiencing a rapidly decreasing level of flu activity, as compared with recent influenza seasons.

The CDC has posted its 27th national influenza activity map showing 7 states with initial “sporadic” flu activity, 20 states with “local” flu activity, 18 states with a higher “regional” level of activity, and 4 states with the highest “widespread” level of activity. The most recent CDC weekly influenza activity map can be viewed at: <http://www.cdc.gov/flu/weekly/usmap.htm>

If you have any questions concerning this report, please contact Alan Siniscalchi or Maria Andrews at the Department of Public Health, Epidemiology and Emerging Infections Program, by calling 860-509-7994.

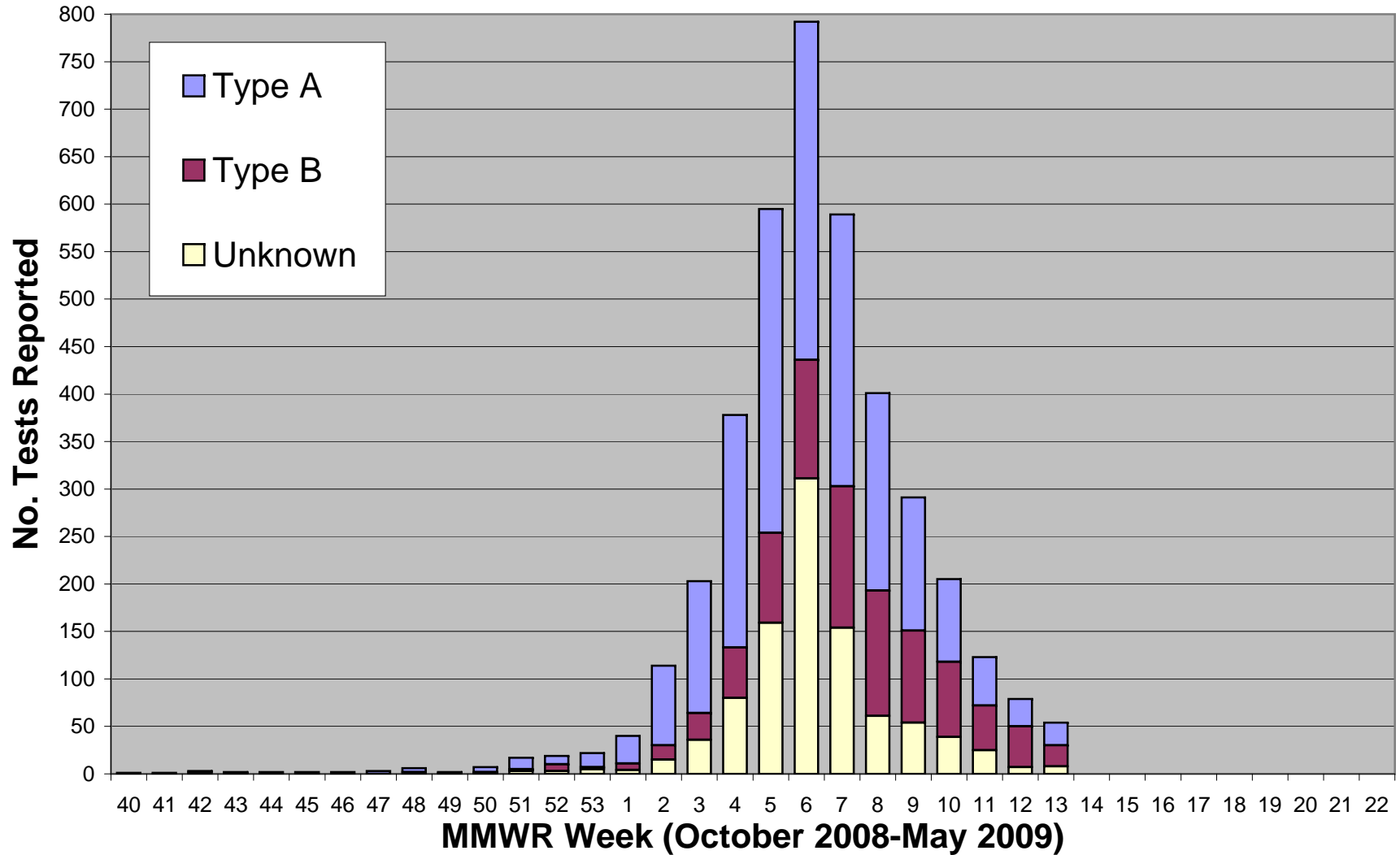
Table 1: Connecticut Department of Public Health 2008-2009 Laboratory Confirmed Influenza Testing
For Week 13 (week ending April 4, 2009)

Results by		Previous	New	Total
TEST:	Culture	312	28	340
	Rapid Test	3,566	47	3,613
FLU TYPE:	Type A	2,043	32	2,075
	Type B	881	30	911
	Unknown	954	13	967
COUNTY:	Fairfield	1,394	18	1,412
	Hartford	410	7	417
	Litchfield	182	7	189
	Middlesex	245	5	250
	New Haven	1,285	31	1,316
	New London	121	1	122
	Tolland	105	1	106
	Windham	136	5	141
GENDER:	Female	2,017	41	2,058
	Male	1,861	34	1,895
Total		3,878	75	3,953

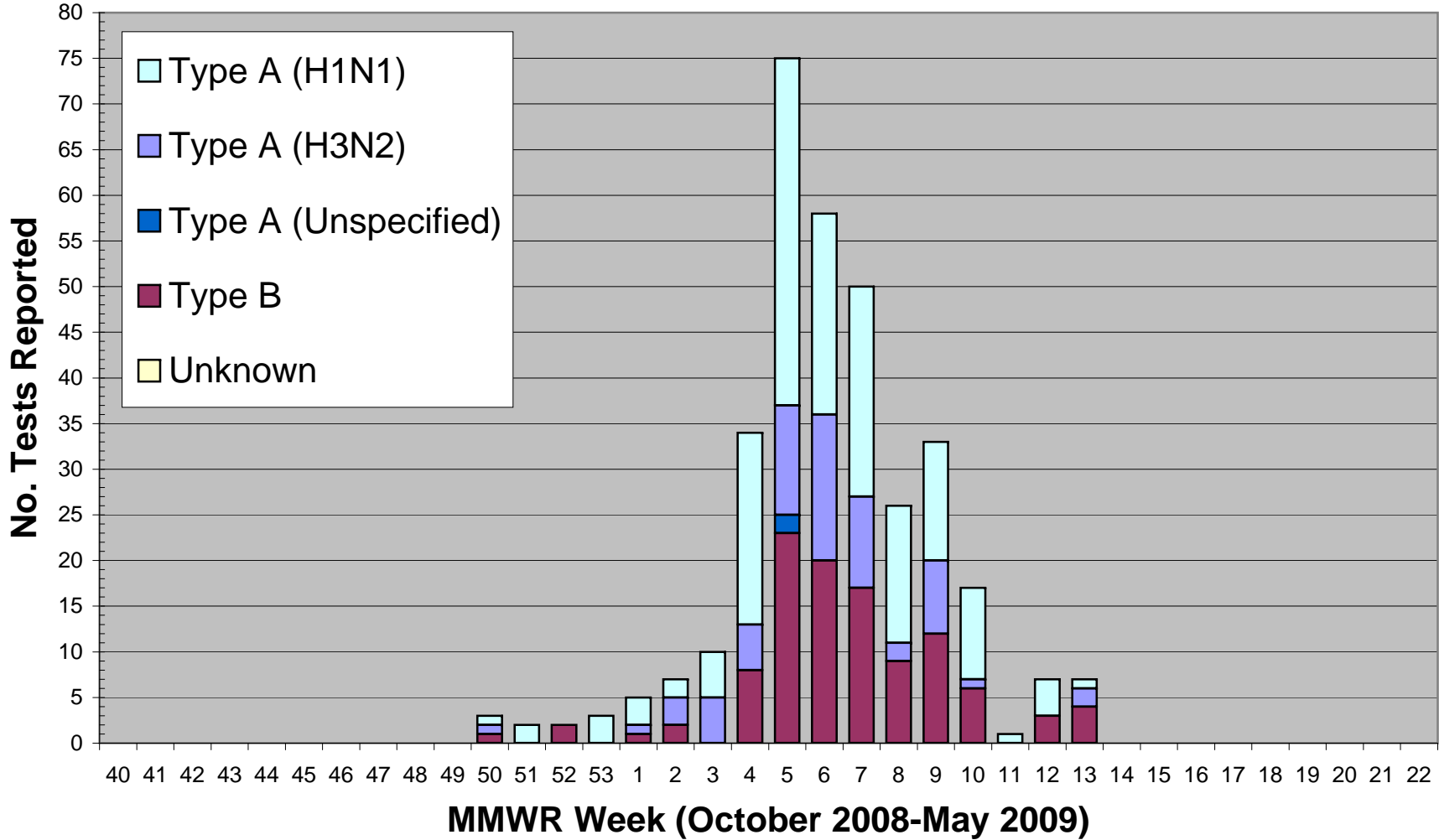
Age:	Previous	New	Total	Week	Dates - 2009	Total
0-4	461	13	474	1	January 4 - 10	40
5-24	2,171	33	2,204	2	January 11-17	114
25-64	1,039	22	1,061	3	January 18-24	203
≥65	207	7	214	4	January 25-31	378
Age Range: <1 – 101 Average Age: 22.4				5	February 1-7	595
				6	February 8-14	792
				7	February 15-21	589
				8	February 22-28	401

Week	Dates - 2008	Total	Week	Dates - 2009	Total
			9	March 1-7	291
40	Sept. 28 - Oct. 4	1	10	March 8-14	205
41	October 5-11	1	11	March 15-21	123
42	October 12-18	3	12	March 22-28	79
43	October 19-25	2	13	March 29- April 4	54
44	Oct. 26 - Nov. 1	2	14	April 5-11	
45	November 2-8	2	15	April 12-18	
46	November 9-15	2	16	April 19-25	
47	November 16-22	3	17	April 26- May 2	
48	November 23 -29	6	18	May 3- 9	
49	Nov. 30 – Dec. 6	2	19	May 10-16	
50	December 7-13	7	20	May 17-23	
51	December 14-20	17	21	May 24-30	
52	December 21-27	19	22	May 31- June 6	
53	Dec. 28- Jan. 3	22			

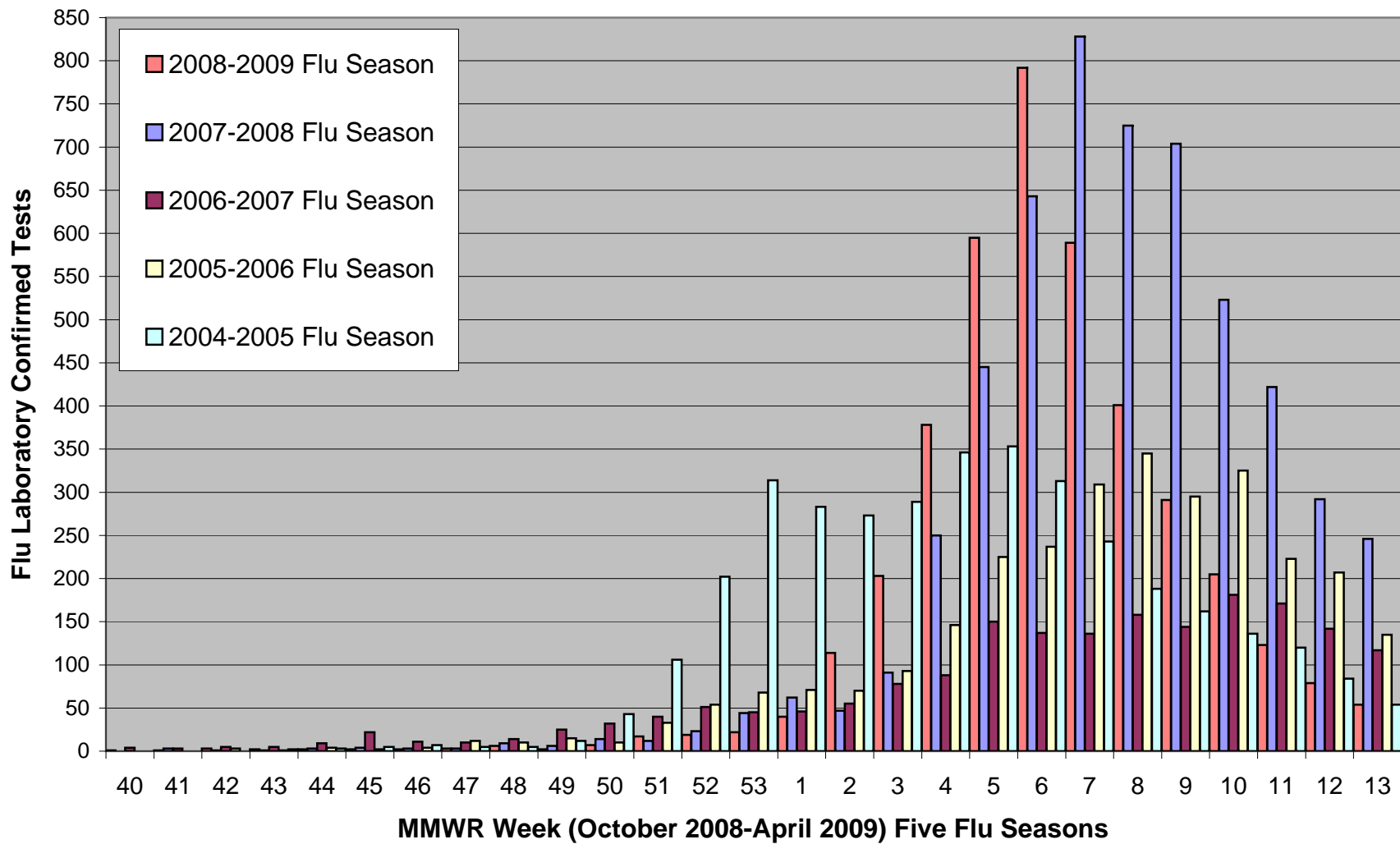
Figure 1. Laboratory Confirmed Tests by Flu Type, Connecticut, 2008-2009 Influenza Season



**Figure 2. Department of Public Health Laboratory Culture
Confirmed Tests by Flu Type,
Connecticut, 2008-2009 Flu Season**



**Figure 3a. Laboratory Confirmed Tests by Flu Season
Connecticut, 2004-2009**



**Figure 3b. Laboratory Confirmed Tests by Flu Season
Connecticut, 2003-2009**

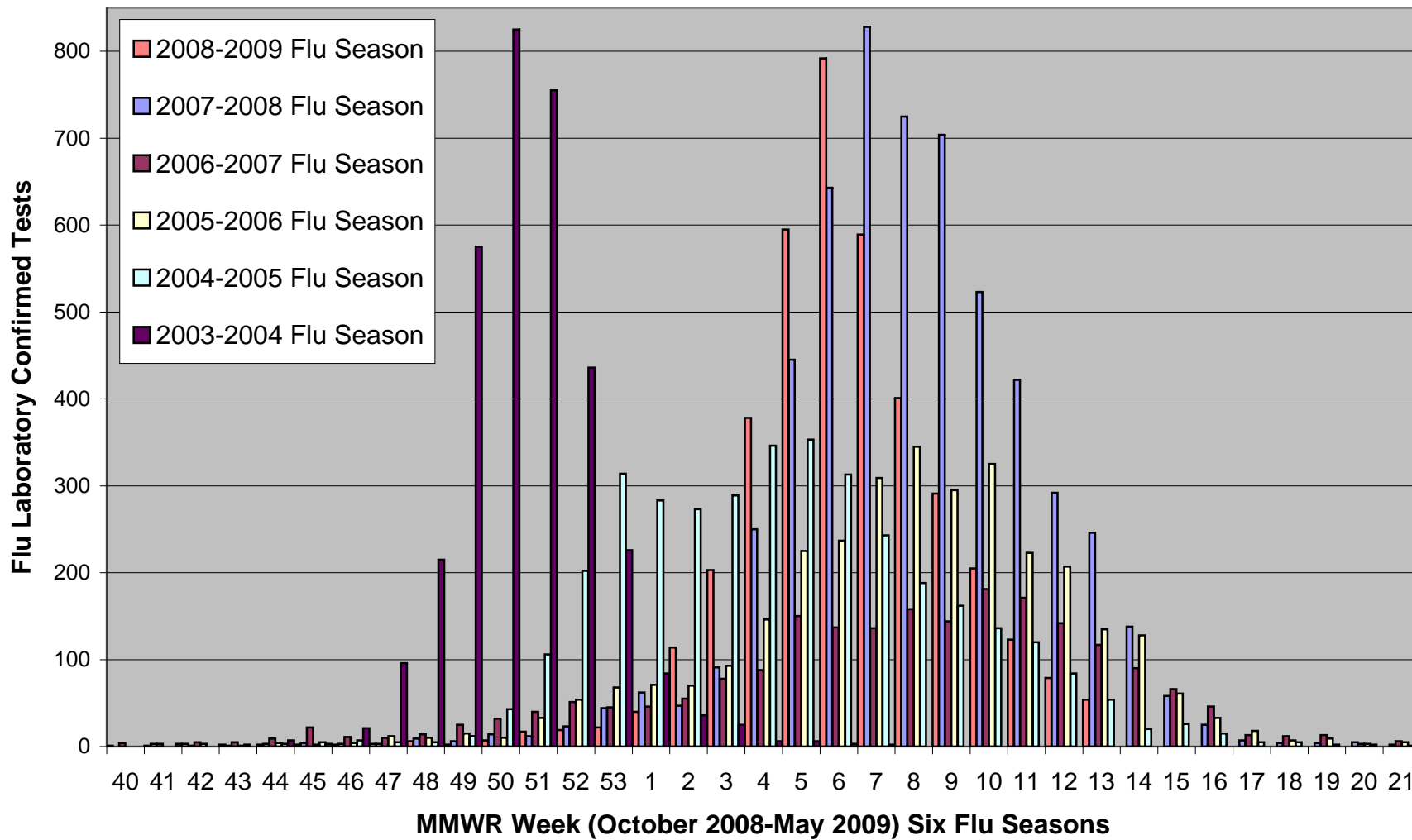
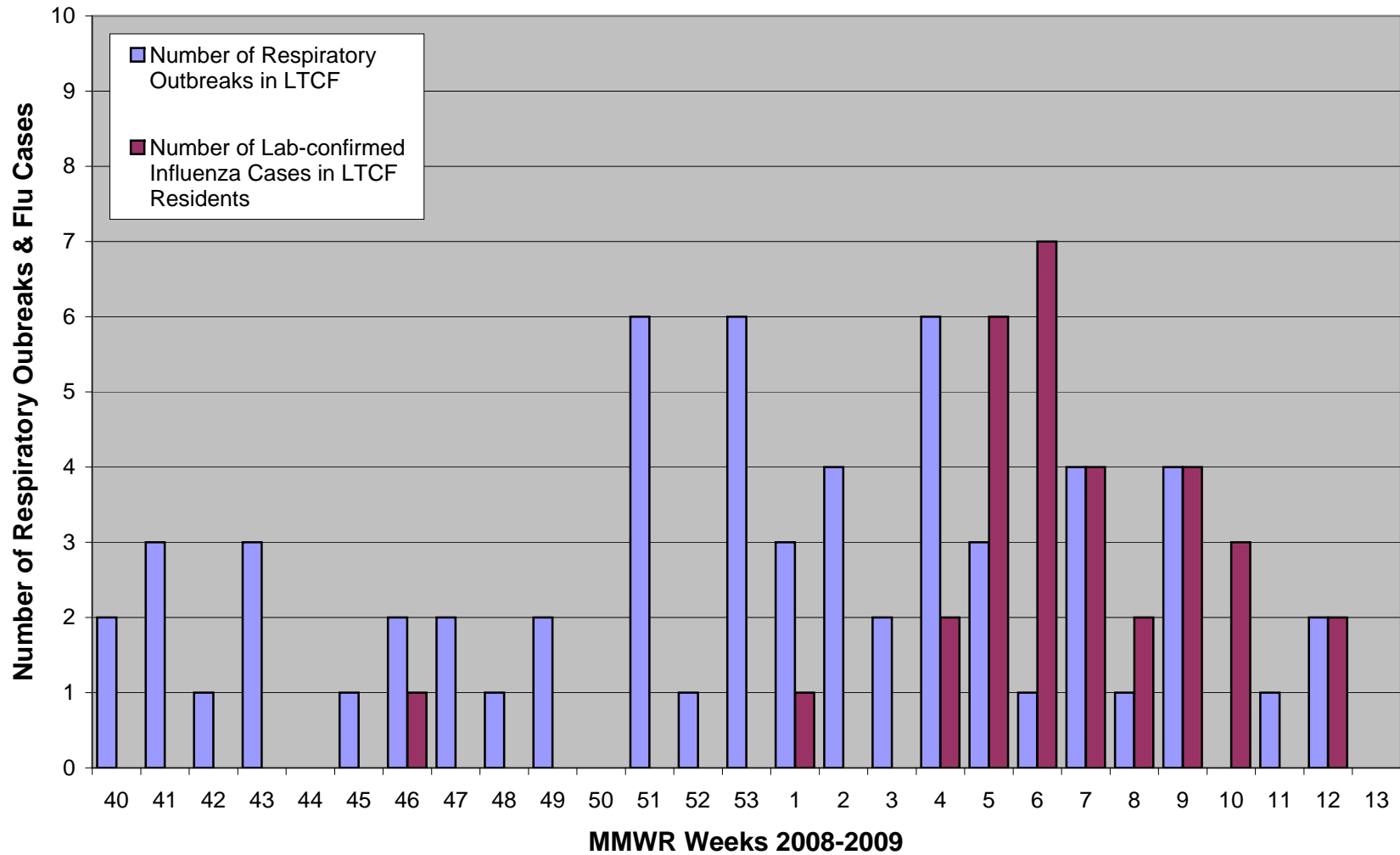


Figure 4. Respiratory Outbreaks & Influenza in Long-term Care Facilities (LTCF), Connecticut, 2008-2009 Influenza Season



**Figure 5. Outpatient Influenza-Like Illness Surveillance Network (ILINet),
Statewide Visits of Patients with Influenza-Like Illness (ILI), Connecticut,
2007-2009**

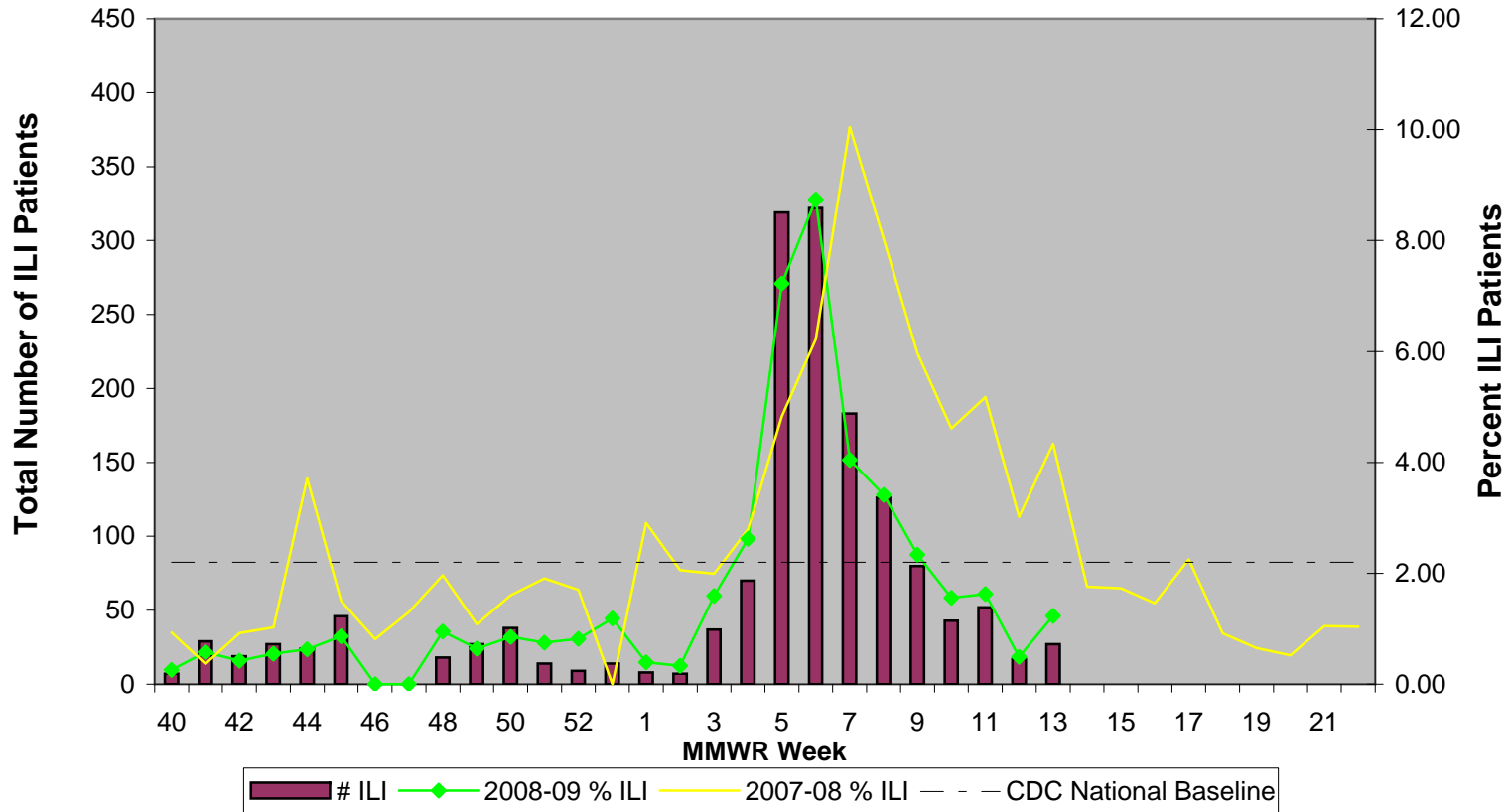


Figure 6. Hospital Emergency Department Syndromic Surveillance (HEDSS) System, Statewide "Fever/Flu" Visits by Flu Season, Connecticut, 2006-2009

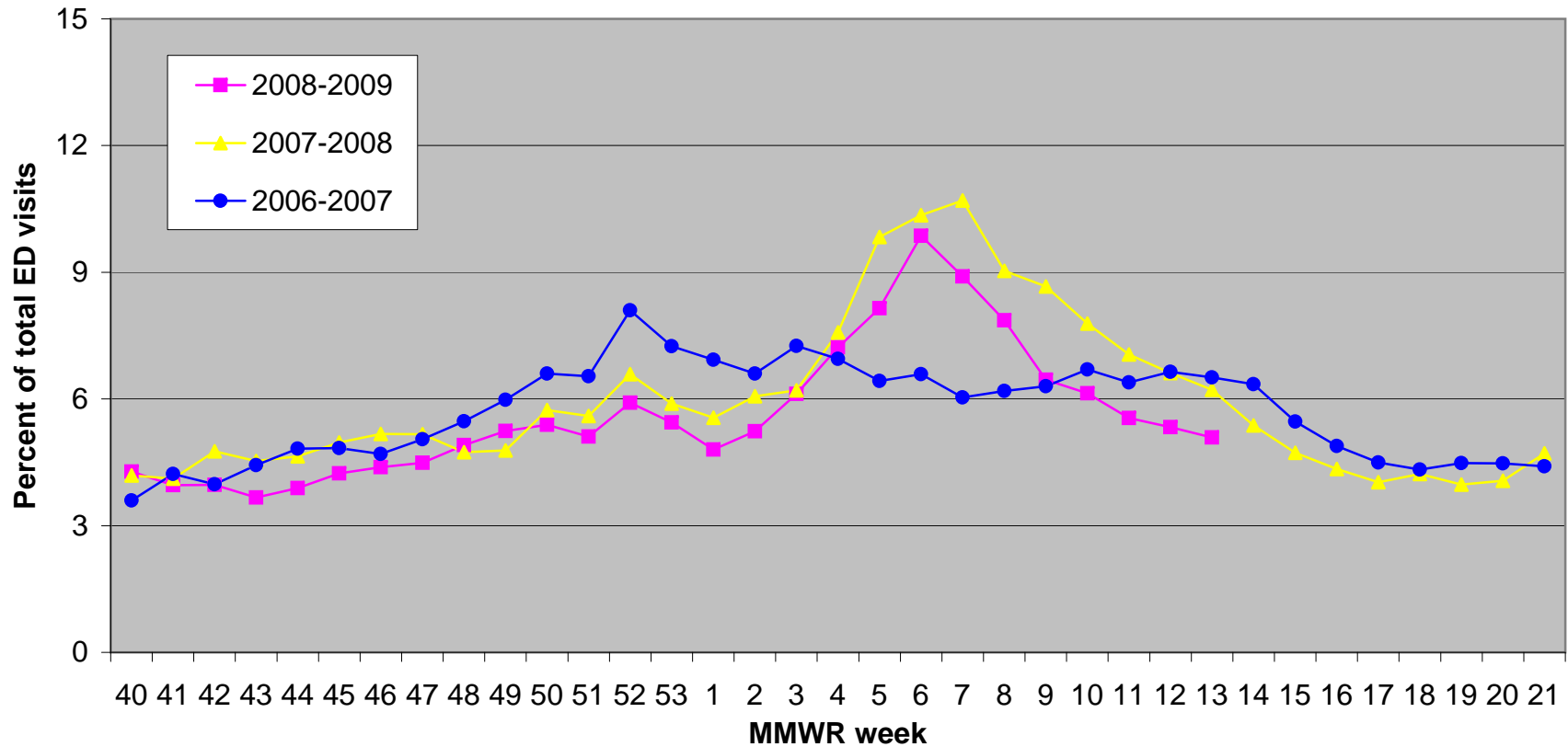


Figure 7. Hospital Admissions Syndromic Surveillance (HASS) System, Connecticut Statewide Pneumonia Admissions by Flu Season; 2005-2009

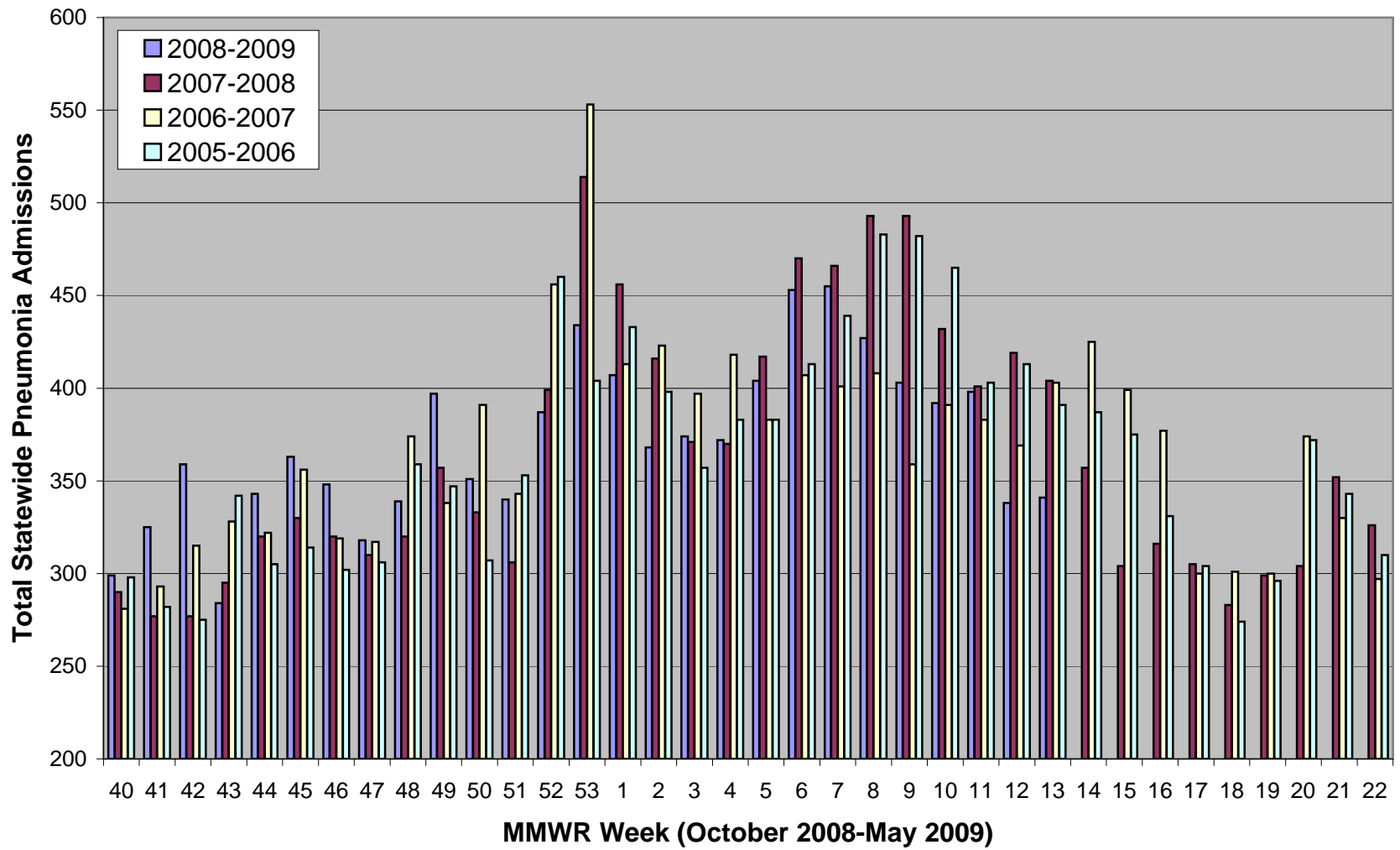


Figure 8. CDC 122 Cities Surveillance: Pneumonia & influenza Deaths in Selected Connecticut Cities, 2007-2008 & 2008-2009 Flu Seasons

