

**STATE OF CONNECTICUT DEPARTMENT OF PUBLIC HEALTH  
PRELIMINARY INFLUENZA ACTIVITY REPORT  
For Week 14 (week ending April 11, 2009)**



Preliminary influenza data reviewed from the week ending April 11<sup>th</sup> revealed that a decreasing level of flu activity continued to be observed during the 28<sup>th</sup> week of the official 2008-2009 influenza season. These data include a total of 3,980 laboratory confirmed test results from various Connecticut hospitals that reveal the presence of both type A and type B flu viruses, and include reports from 7 (Fairfield, Hartford, Litchfield, Middlesex, New Haven, New London, and Windham) of 8 Connecticut counties (see Table 1, Figure 1). Our national flu activity classification changed from “regional” to “local” as a result of the decreasing level of flu activity. The DPH laboratory has culture-confirmed the presence of influenza virus in 344 clinical specimens. Characterization of these isolates reveals the presence of the influenza A (H1N1) subtype in 165 specimens, the influenza A (H3N2) subtype in 66 specimens, an unspecified influenza A isolate in 2 specimens, and influenza B in 111 specimens (see Figure 2). Clinicians should be aware of oseltamivir resistance among flu A (H1N1) strains. While influenza activity is still present statewide, weekly counts continue to be below those observed during the equivalent weeks in most of the last 5 seasons (see Figures 3a & 3b).

Six additional indicators of flu activity are being monitored throughout these initial weeks of the 2008-2009 flu season. Information on respiratory outbreaks and laboratory confirmed influenza cases in long-term care facilities are shown in Figure 4. Data on Connecticut residents presenting with influenza-like-illness (ILI) as reported by participants of the United States Outpatient Influenza-like Illness Surveillance Network (ILINet) (formerly known as the U.S. Influenza Sentinel Provider Surveillance Network) are shown in Figure 5. These reporting sites also include participants in the Connecticut Influenza Super Sentinel Surveillance Pilot Project organized this year to provide additional information on outpatient ILI activity.

Data on emergency department visits from our Hospital Emergency Department Syndromic Surveillance (HEDSS) System are also analyzed. One category in particular, fever/flu, has been shown to correlate well with influenza activity (see Figure 6). Patients with more severe illness who are admitted into Connecticut hospitals are tracked by the Connecticut Hospital Admissions Syndromic Surveillance (HASS) System. Data on one category, total statewide pneumonia admissions, correlates with flu activity (see Figure 7). Finally, selected mortality data are monitored each week including pneumonia and influenza deaths from Connecticut cities that participate in the U.S. 122 Cities Mortality Reporting System (see Figure 8), and reports of influenza associated pediatric deaths (none reported to date this flu season). These surveillance systems are providing additional evidence that Connecticut is experiencing a rapidly decreasing level of flu activity, as compared with recent influenza seasons.

The CDC has posted its 28<sup>th</sup> national influenza activity map showing 12 states with initial “sporadic” flu activity, 22 states with “local” flu activity, 14 states with a higher “regional” level of activity, and 1 state with the highest “widespread” level of activity. The most recent CDC weekly influenza activity map can be viewed at: <http://www.cdc.gov/flu/weekly/usmap.htm>

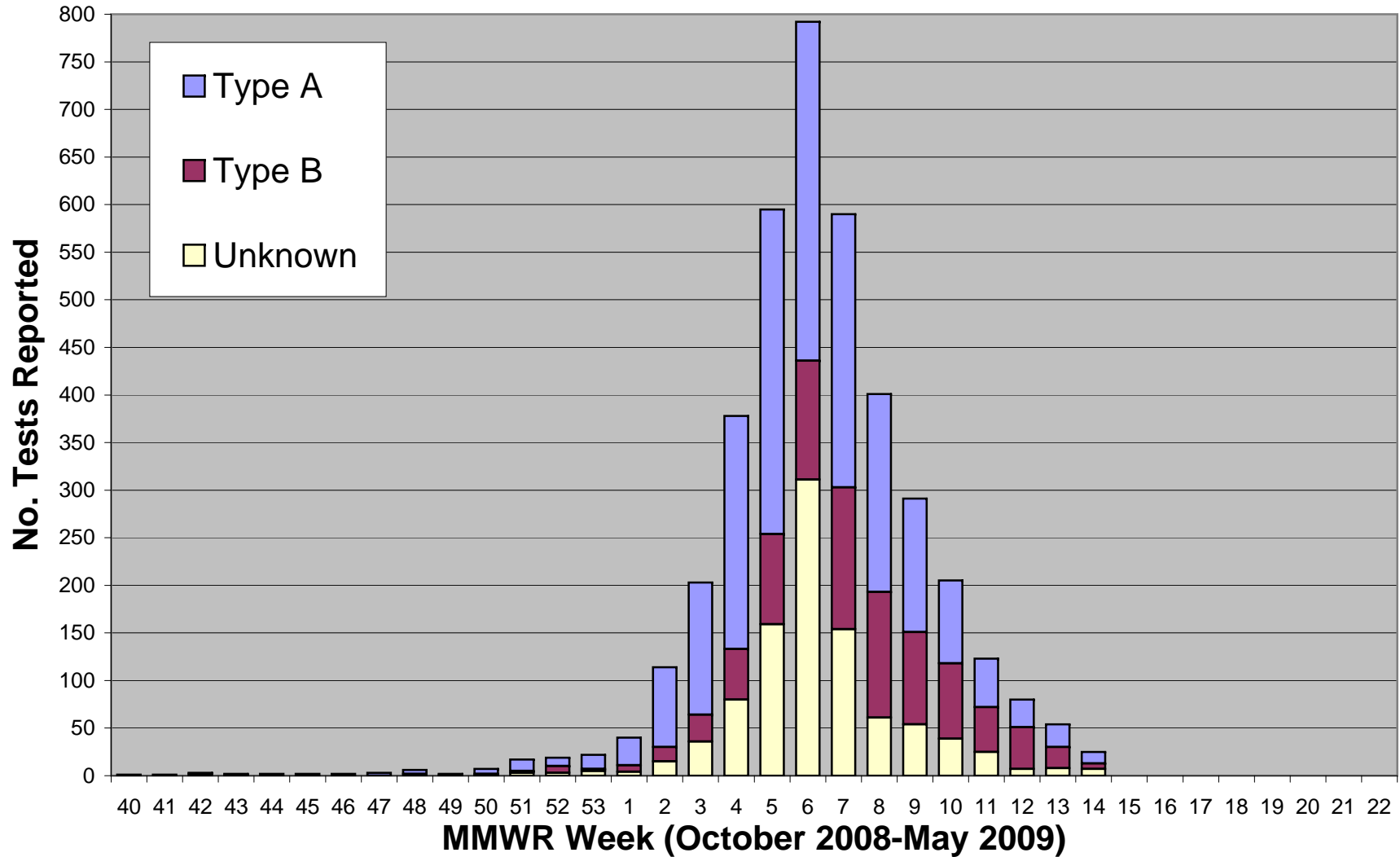
If you have any questions concerning this report, please contact Alan Siniscalchi or Maria Andrews at the Department of Public Health, Epidemiology and Emerging Infections Program, by calling 860-509-7994.

**Table 1: Connecticut Department of Public Health 2008-2009  
Laboratory Confirmed Influenza Testing  
For Week 14 (week ending April 11, 2009)**

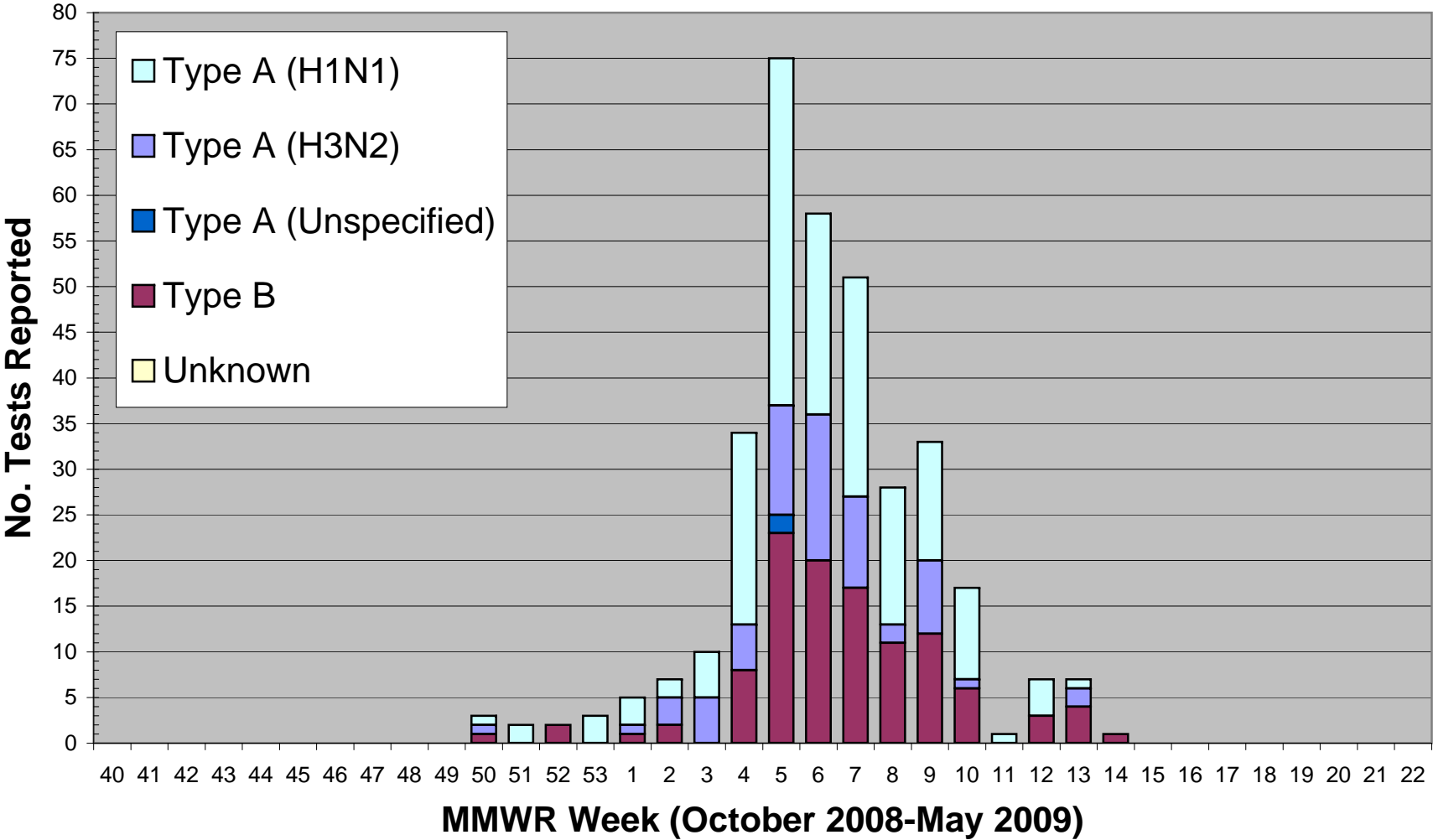
Results by		Previous	New	Total
TEST:	Culture	340	4	344
	Rapid Test	3,613	23	3,636
FLU TYPE:	Type A	2,075	13	2,088
	Type B	911	7	918
	Unknown	967	7	974
COUNTY:	Fairfield	1,412	7	1,419
	Hartford	417	2	419
	Litchfield	189	2	191
	Middlesex	250	5	255
	New Haven	1,316	9	1,325
	New London	122	1	123
	Tolland	106	0	106
	Windham	141	1	142
GENDER:	Female	2,058	15	2,073
	Male	1,895	12	1,907
<b>Total</b>		<b>3,953</b>	<b>27</b>	<b>3,980</b>

Age:	Previous	New	Total	Week	Dates - 2009	Total
0-4	474	1	475	1	January 4 - 10	40
5-24	2,204	11	2,215	2	January 11-17	114
25-64	1,061	11	1,072	3	January 18-24	203
≥65	214	4	218	4	January 25-31	378
Age Range: <1 – 101 Average Age: 22.5				5	February 1-7	595
				6	February 8-14	792
				7	February 15-21	590
				8	February 22-28	401
				9	March 1-7	291
				10	March 8-14	205
				11	March 15-21	123
				12	March 22-28	80
				13	March 29- April 4	54
				14	April 5-11	25
				15	April 12-18	
				16	April 19-25	
				17	April 26- May 2	
				18	May 3- 9	
				19	May 10-16	
				20	May 17-23	
				21	May 24-30	
				22	May 31- June 6	
				23		
				24		
				25		
				26		
				27		
				28		
				29		
				30		
				31		
				32		
				33		
				34		
				35		
				36		
				37		
				38		
				39		
				40		
				41		
				42		
				43		
				44		
				45		
				46		
				47		
				48		
				49		
				50		
				51		
				52		
				53		

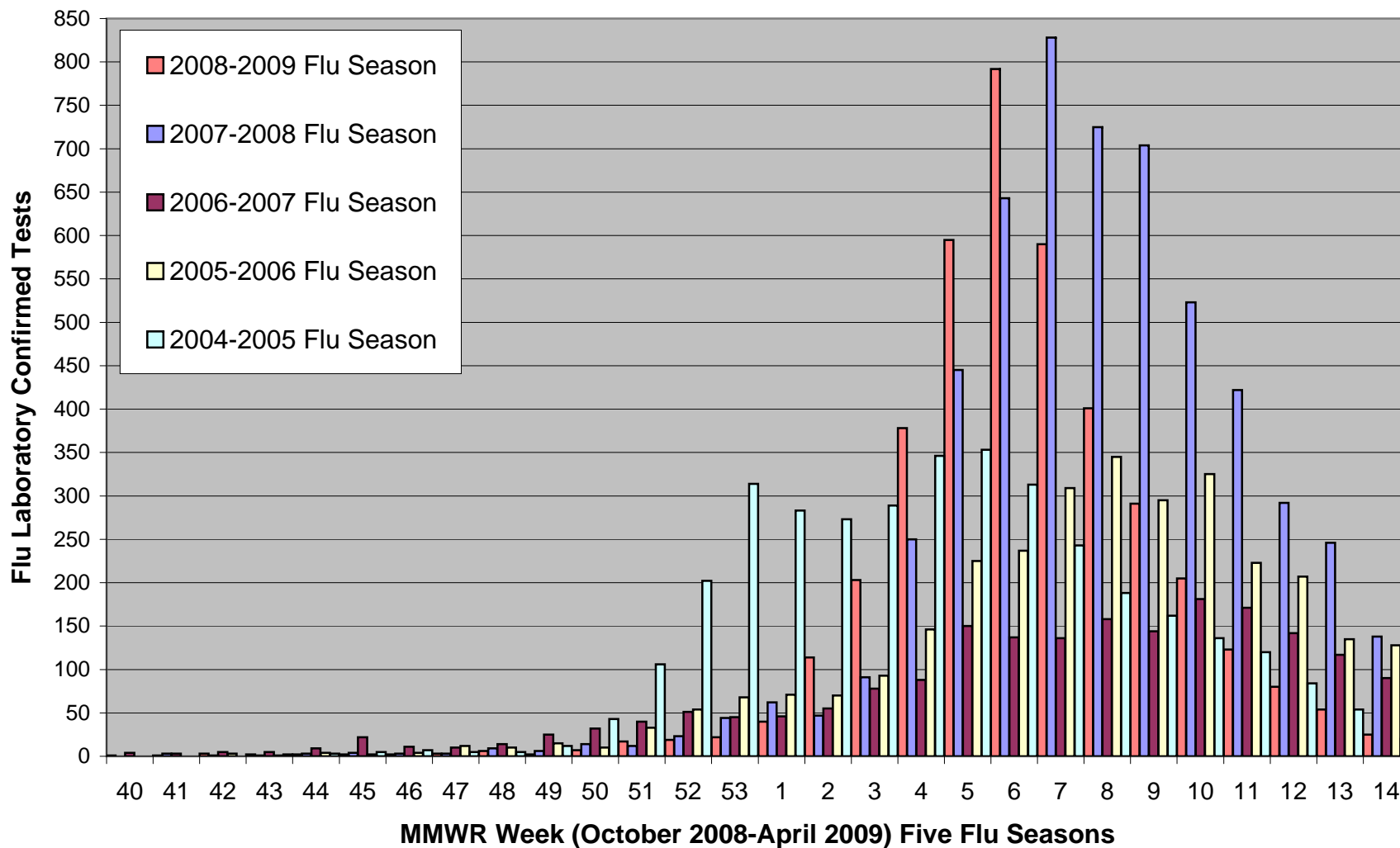
**Figure 1. Laboratory Confirmed Tests by Flu Type, Connecticut, 2008-2009 Influenza Season**



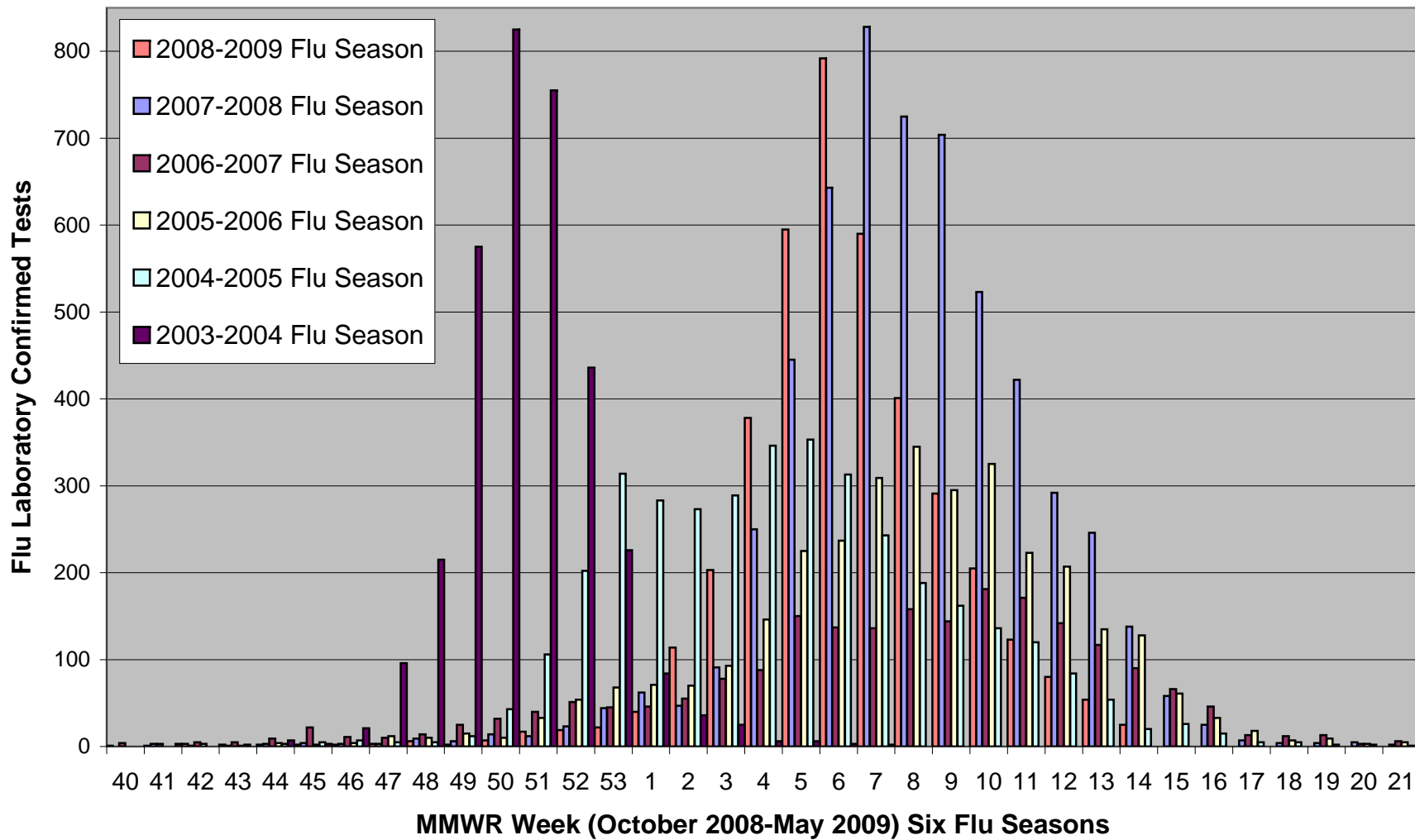
**Figure 2. Department of Public Health Laboratory Culture  
Confirmed Tests by Flu Type,  
Connecticut, 2008-2009 Flu Season**



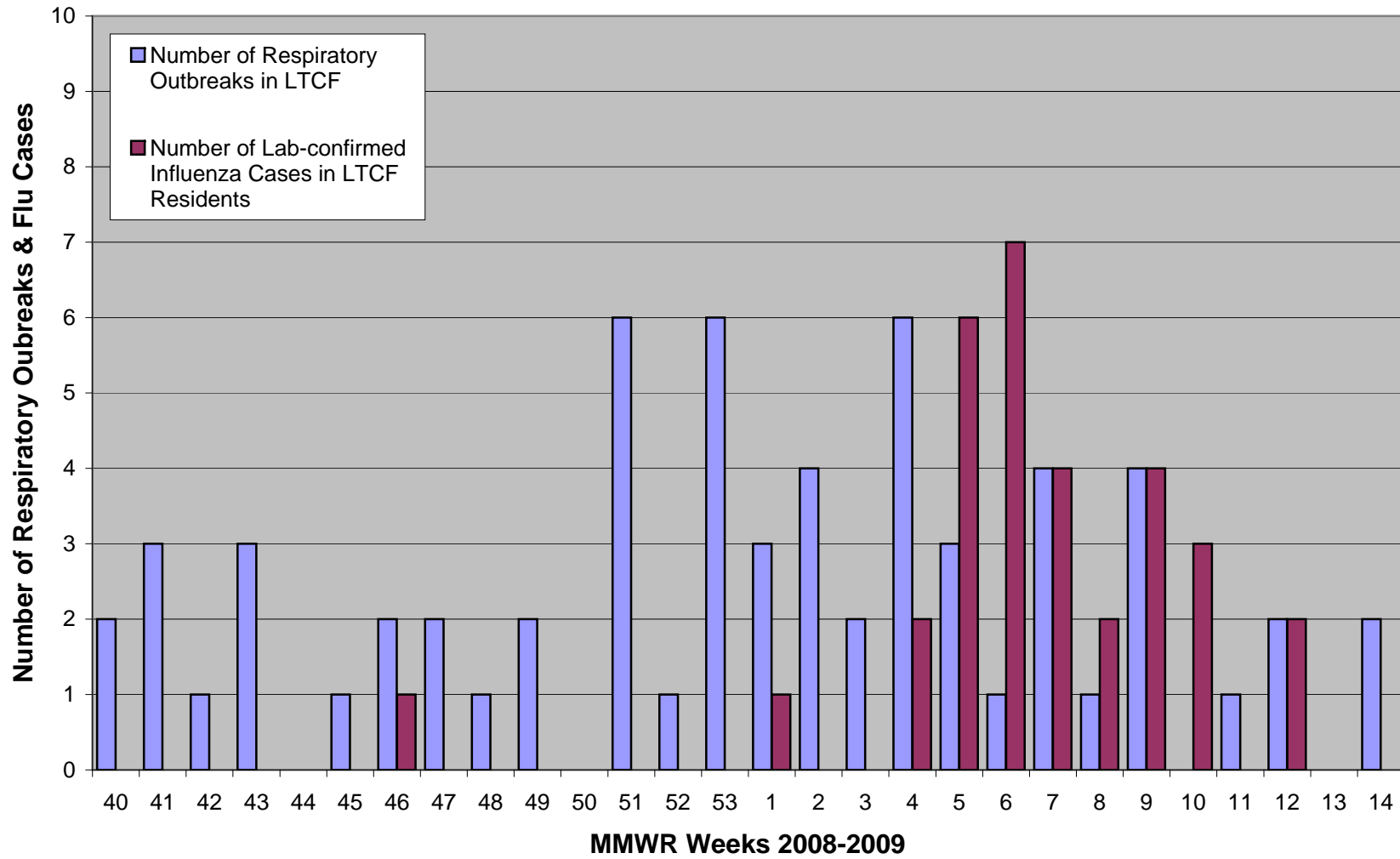
**Figure 3a. Laboratory Confirmed Tests by Flu Season  
Connecticut, 2004-2009**



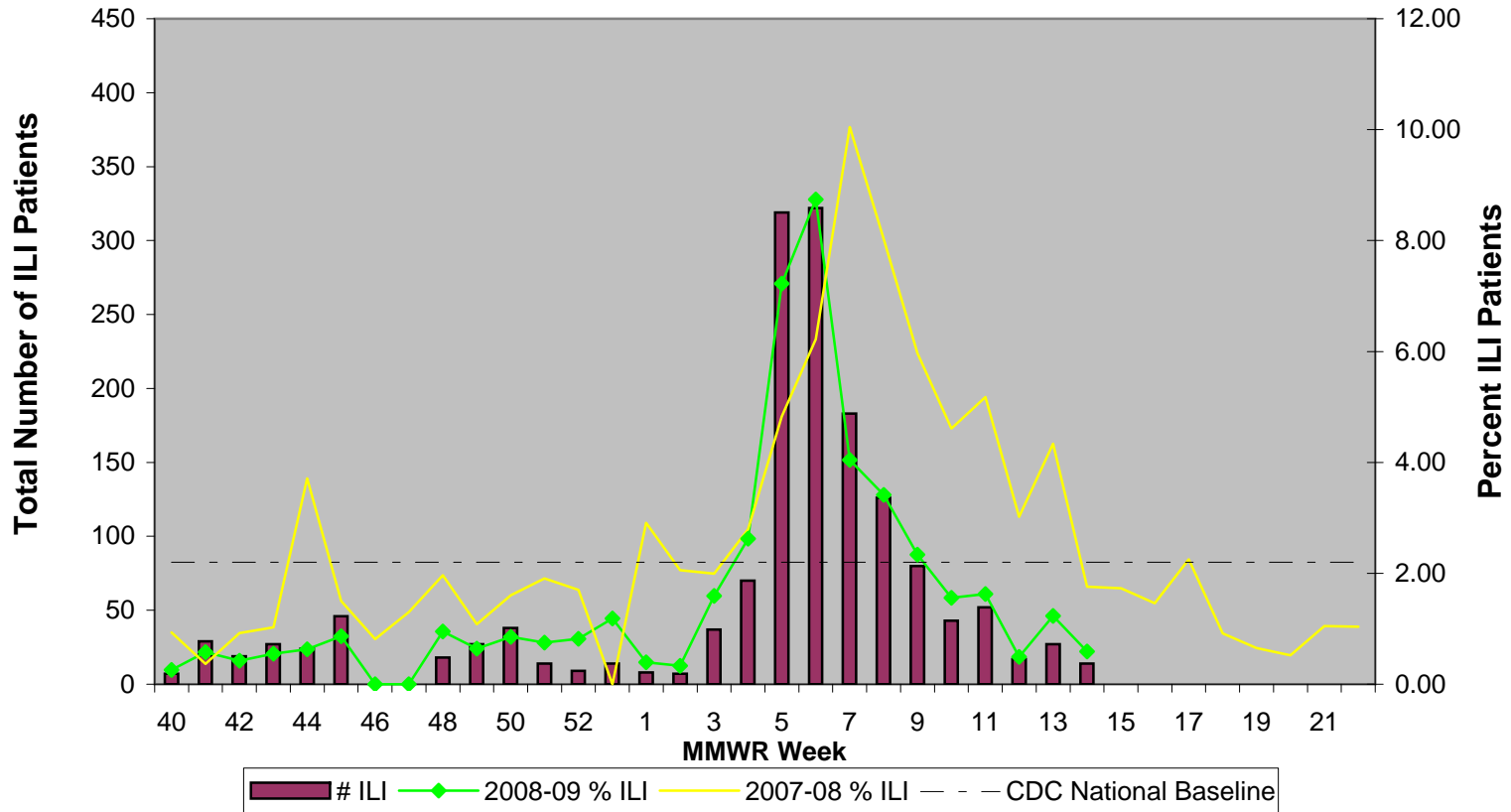
**Figure 3b. Laboratory Confirmed Tests by Flu Season  
Connecticut, 2003-2009**



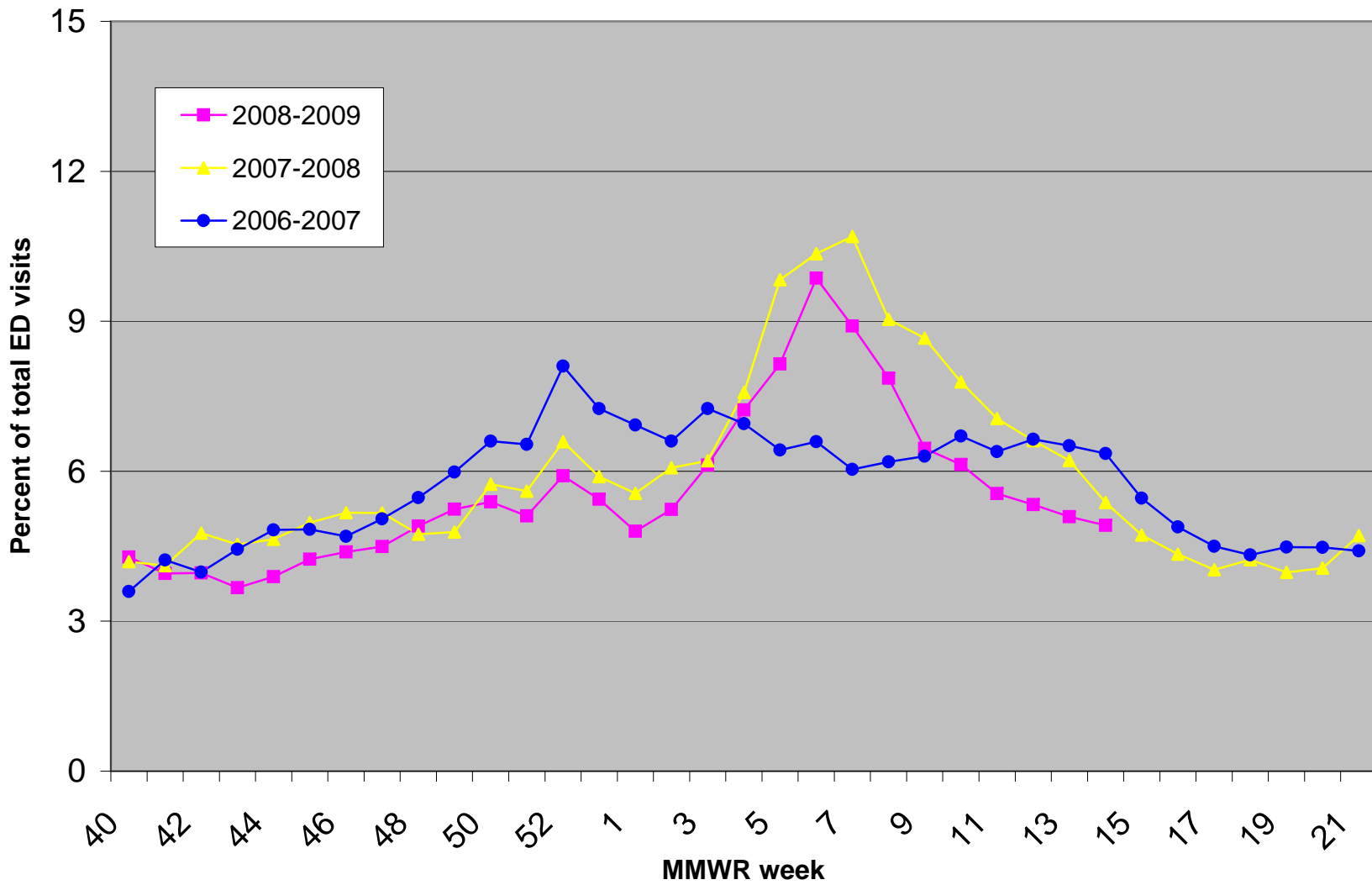
**Figure 4. Respiratory Outbreaks & Influenza in Long-term Care Facilities (LTCF), Connecticut, 2008-2009 Influenza Season**



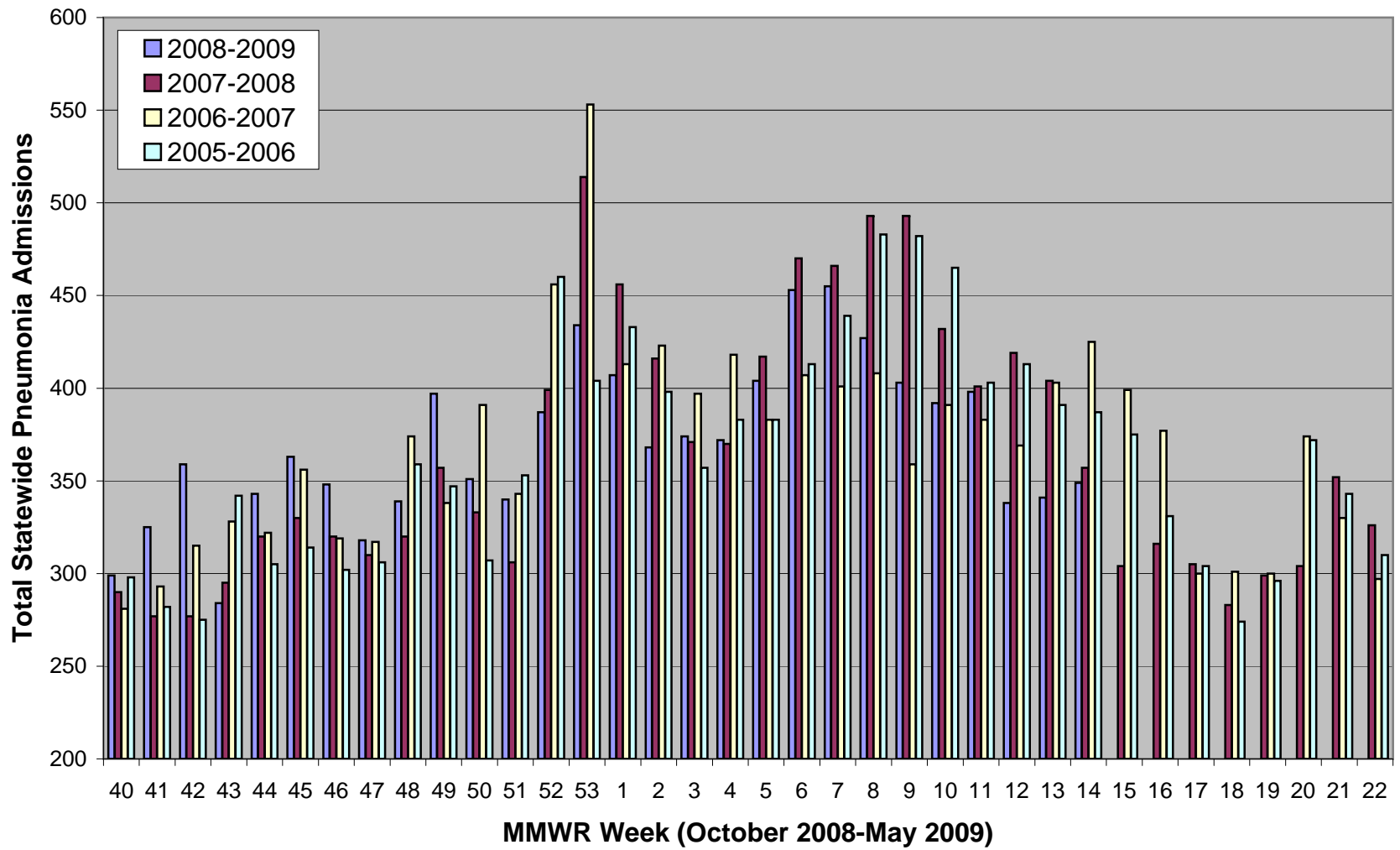
**Figure 5. Outpatient Influenza-Like Illness Surveillance Network (ILINet),  
Statewide Visits of Patients with Influenza-Like Illness (ILI), Connecticut,  
2007-2009**



**Figure 6. Hospital Emergency Department Syndromic Surveillance (HEDSS) System, Statewide "Fever/Flu" Visits by Flu Season, Connecticut, 2006-2009**



**Figure 7. Hospital Admissions Syndromic Surveillance (HASS) System, Connecticut Statewide Pneumonia Admissions by Flu Season; 2005-2009**



**Figure 8. CDC 122 Cities Surveillance: Pneumonia & influenza Deaths in Selected Connecticut Cities, 2007-2008 & 2008-2009 Flu Seasons**

