

**STATE OF CONNECTICUT DEPARTMENT OF PUBLIC HEALTH
PRELIMINARY INFLUENZA ACTIVITY REPORT
For Week 4 (week ending January 31, 2009)**



Preliminary influenza data reviewed from the week ending January 31st revealed that a rapidly increasing level of activity was observed during the 18th week of the official 2008-2009 influenza season. These data include a total of 722 laboratory confirmed test results from various Connecticut hospitals that reveal the presence of both type A and type B flu viruses, and include reports from all 8 (Fairfield, Hartford, Litchfield, Middlesex, New Haven, New London, Tolland, and Windham) Connecticut counties (see Table 1, Figure 1). Our national flu activity classification remains as “regional” as a result of increasing activity in Fairfield and New Haven counties. The DPH laboratory has culture-confirmed the presence of influenza virus in 29 clinical specimens. Characterization of these isolates reveals the presence of the influenza A (H1N1) subtype in 15 specimens, the influenza A (H3N2) subtype in 6 specimens, unspecified influenza A isolates in 1 specimen, and influenza B in 7 specimens (see Figure 2). Clinicians should be aware of oseltamivir resistance among many flu A (H1N1) strains. Weekly influenza activity has now increased to a level that exceeds activity observed during the equivalent weeks in most of the last 5 seasons (see Figures 3a & 3b).

Six additional indicators of flu activity are being monitored throughout these initial weeks of the 2008-2009 flu season. Information on respiratory outbreaks and laboratory confirmed influenza cases in long-term care facilities are shown in Figure 4. Data on Connecticut residents presenting with influenza-like-illness (ILI) as reported by participants of the United States Outpatient Influenza-like Illness Surveillance Network (ILINet) (formerly known as the U.S. Influenza Sentinel Provider Surveillance Network) are shown in Figure 5. These reporting sites also include participants in the Connecticut Influenza Super Sentinel Surveillance Pilot Project organized this year to provide additional information on outpatient ILI activity.

Data on emergency department visits from our Hospital Emergency Department Syndromic Surveillance (HEDSS) System are also analyzed. One category in particular, fever/flu, has been shown to correlate well with influenza activity (see Figure 6). Patients with more severe illness who are admitted into Connecticut hospitals are tracked by the Connecticut Hospital Admissions Syndromic Surveillance (HASS) System. Data on one category, total statewide pneumonia admissions, correlates with flu activity (see Figure 7). Finally, selected mortality data are monitored each week including pneumonia and influenza deaths from Connecticut cities that participate in the U.S. 122 Cities Mortality Reporting System (see Figure 8), and reports of influenza associated pediatric deaths (none reported to date this flu season). These surveillance systems are providing additional evidence that Connecticut is currently experiencing an increasing level of flu activity as compared with recent influenza seasons.

The CDC has posted its 18th national influenza activity map showing initial “sporadic” flu activity in 11 states, “local” flu activity in 13 states, a higher “regional” level of activity in 21 states, and the highest “widespread” level of activity in 5 states. The most recent CDC weekly influenza activity map can be viewed at: <http://www.cdc.gov/flu/weekly/usmap.htm>

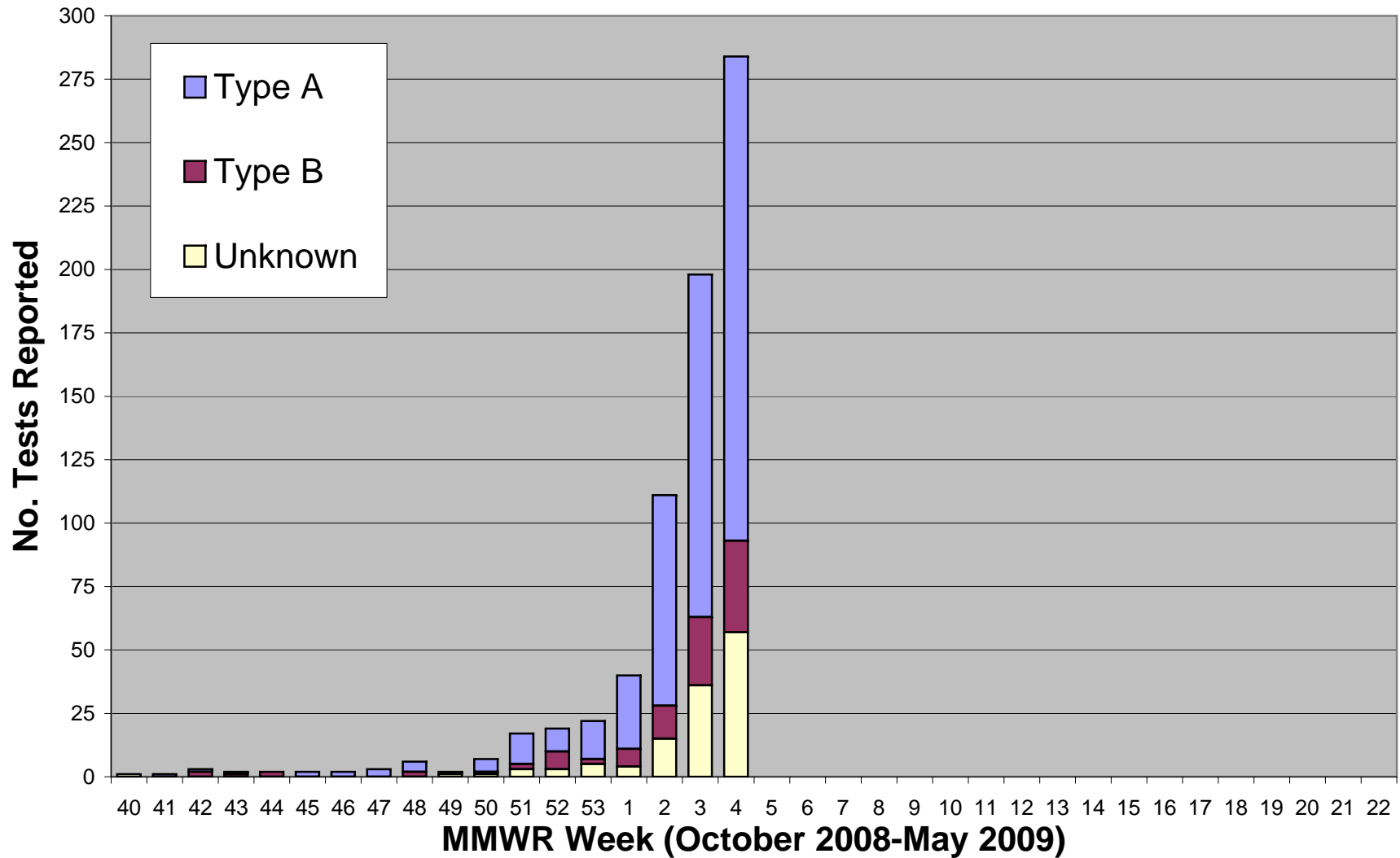
If you have any questions concerning this report, please contact Alan Siniscalchi or Maria Andrews at the Department of Public Health, Epidemiology and Emerging Infections Program, by calling 860-509-7994.

**Connecticut Department of Public Health
2008-2009 Laboratory Confirmed Influenza Testing
For Week 4 (week ending January 31, 2009)**

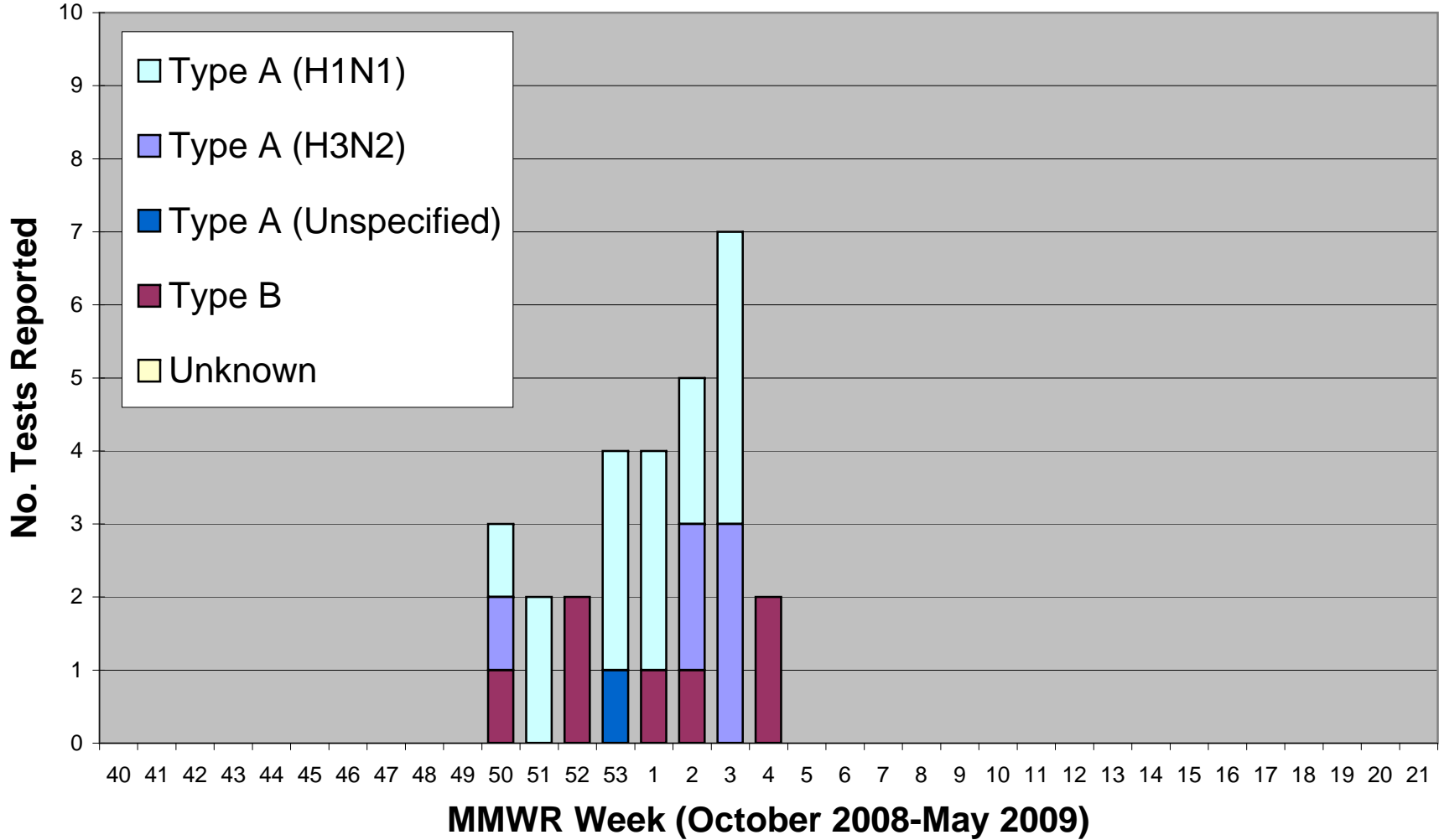
Results by		Previous	New	Total
TEST:	Culture	18	11	29
	Rapid Test	361	332	693
FLU TYPE:	Type A	259	235	494
	Type B	56	46	102
	Unknown	64	62	126
COUNTY:	Fairfield	141	123	264
	Hartford	27	25	52
	Litchfield	22	10	32
	Middlesex	20	46	66
	New Haven	140	129	269
	New London	8	3	11
	Tolland	6	2	8
	Windham	15	5	20
	GENDER:	Female	198	178
	Male	181	165	346
Total		379	343	722

Age:	Previous	New	Total	Week	Dates - 2009	Total
0-4	33	27	60	1	January 4 - 10	40
5-24	170	204	374	2	January 11-17	111
25-64	140	101	241	3	January 18-24	198
≥65	36	11	47	4	January 25-31	284
Age Range: <1 – 95				5	February 1-7	
Average Age: 25.9				6	February 8-14	
				7	February 15-21	
				8	February 22-28	
				9	March 1-7	
				10	March 8-14	
				11	March 15-21	
				12	March 22-28	
				13	March 29- April 4	
				14	April 5-11	
				15	April 12-18	
				16	April 19-25	
				17	April 26- May 2	
				18	May 3- 9	
				19	May 10-16	
				20	May 17-23	
				21	May 24-30	
				22	May 31- June 6	
Week	Dates - 2008	Total				
40	Sept. 28 - Oct. 4	1				
41	October 5-11	1				
42	October 12-18	3				
43	October 19-25	2				
44	Oct. 26 - Nov. 1	2				
45	November 2-8	2				
46	November 9-15	2				
47	November 16-22	3				
48	November 23 -29	6				
49	Nov. 30 – Dec. 6	2				
50	December 7-13	7				
51	December 14-20	17				
52	December 21-27	19				
53	Dec. 28- Jan. 3	22				

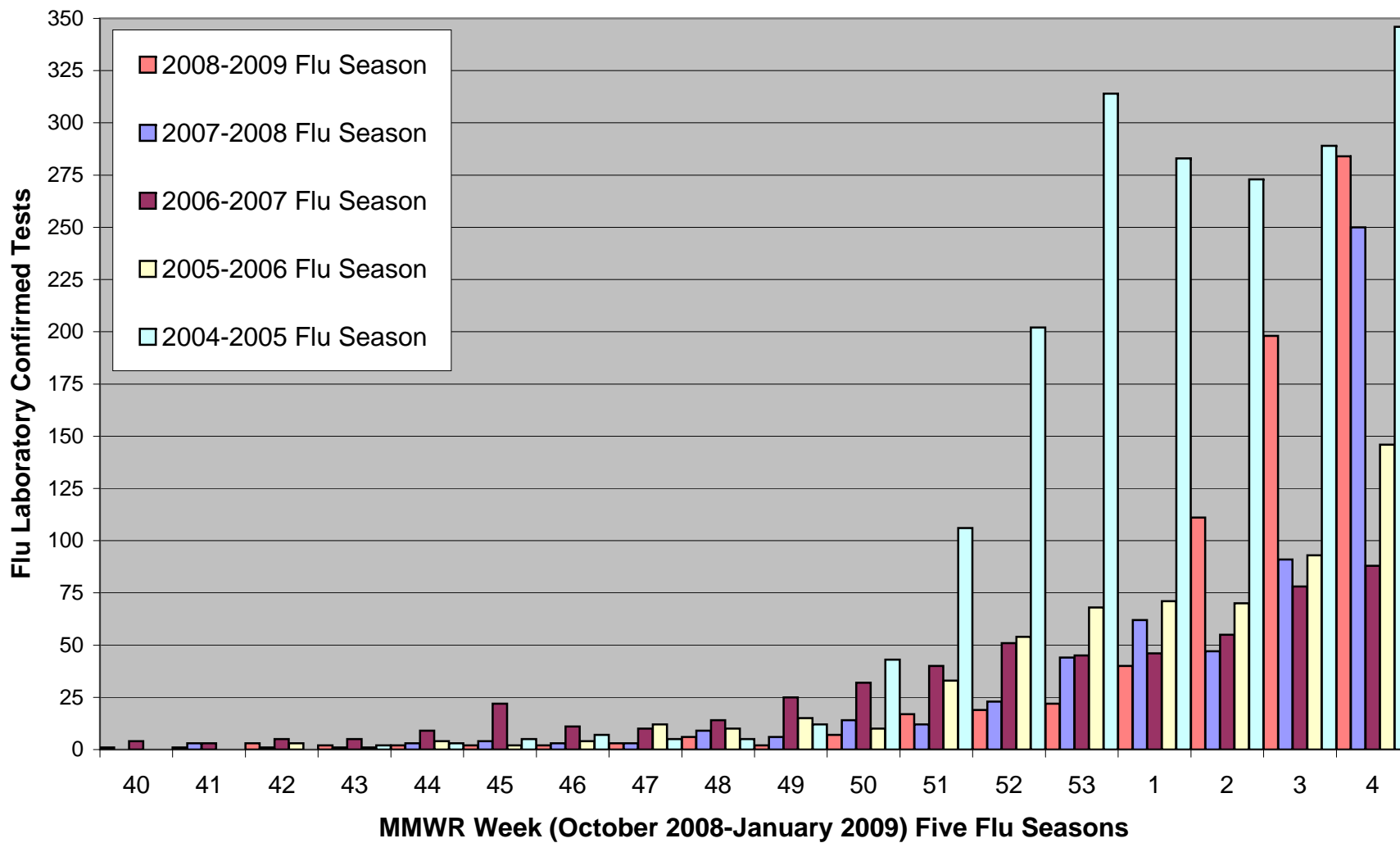
Figure 1. Laboratory Confirmed Tests by Flu Type, Connecticut, 2008-2009 Influenza Season



**Figure 2. Department of Public Health Laboratory Culture
Confirmed Tests by Flu Type,
Connecticut, 2008-2009 Flu Season**



**Figure 3a. Laboratory Confirmed Tests by Flu Season
Connecticut, 2004-2009**



**Figure 3b. Laboratory Confirmed Tests by Flu Season
Connecticut, 2003-2009**

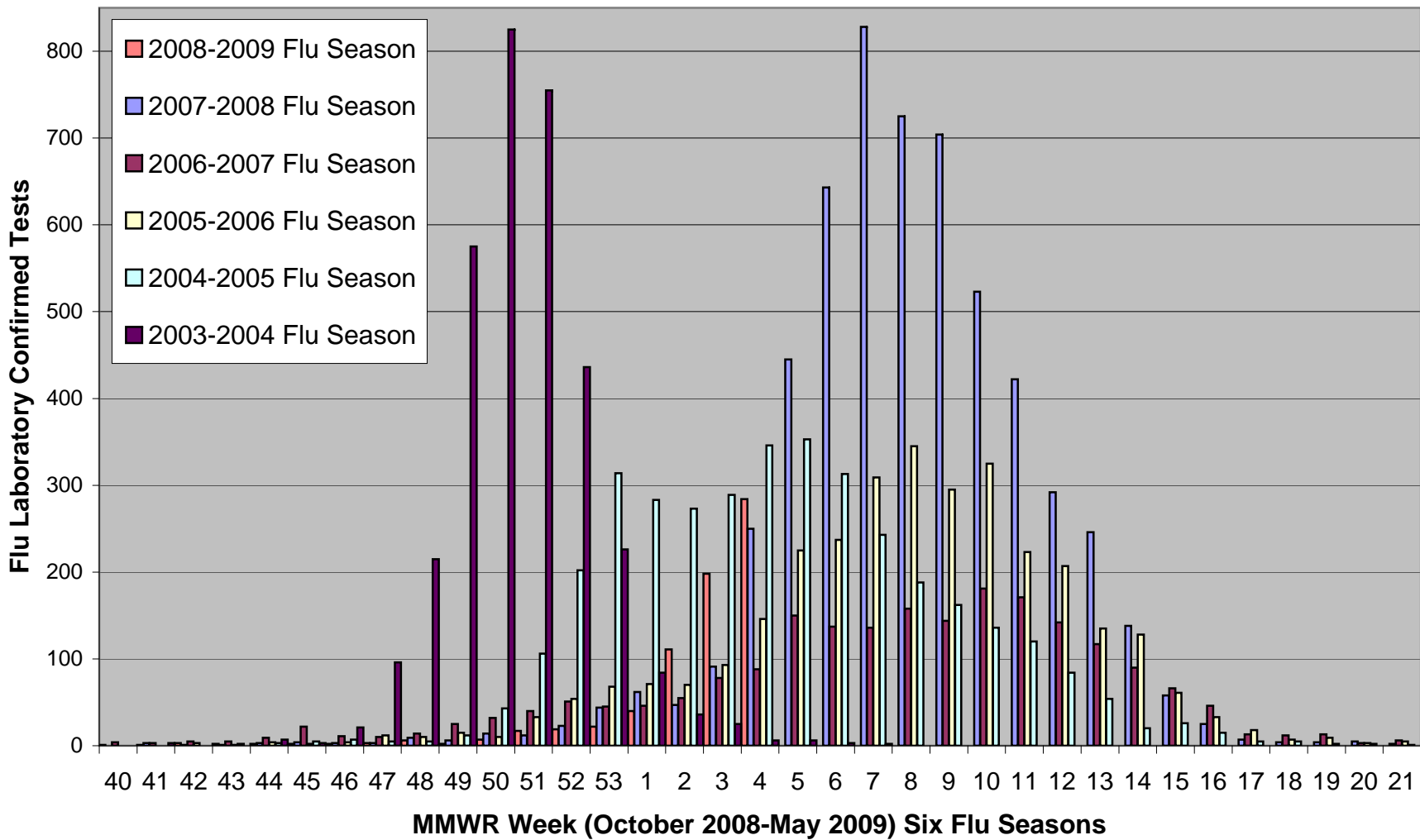
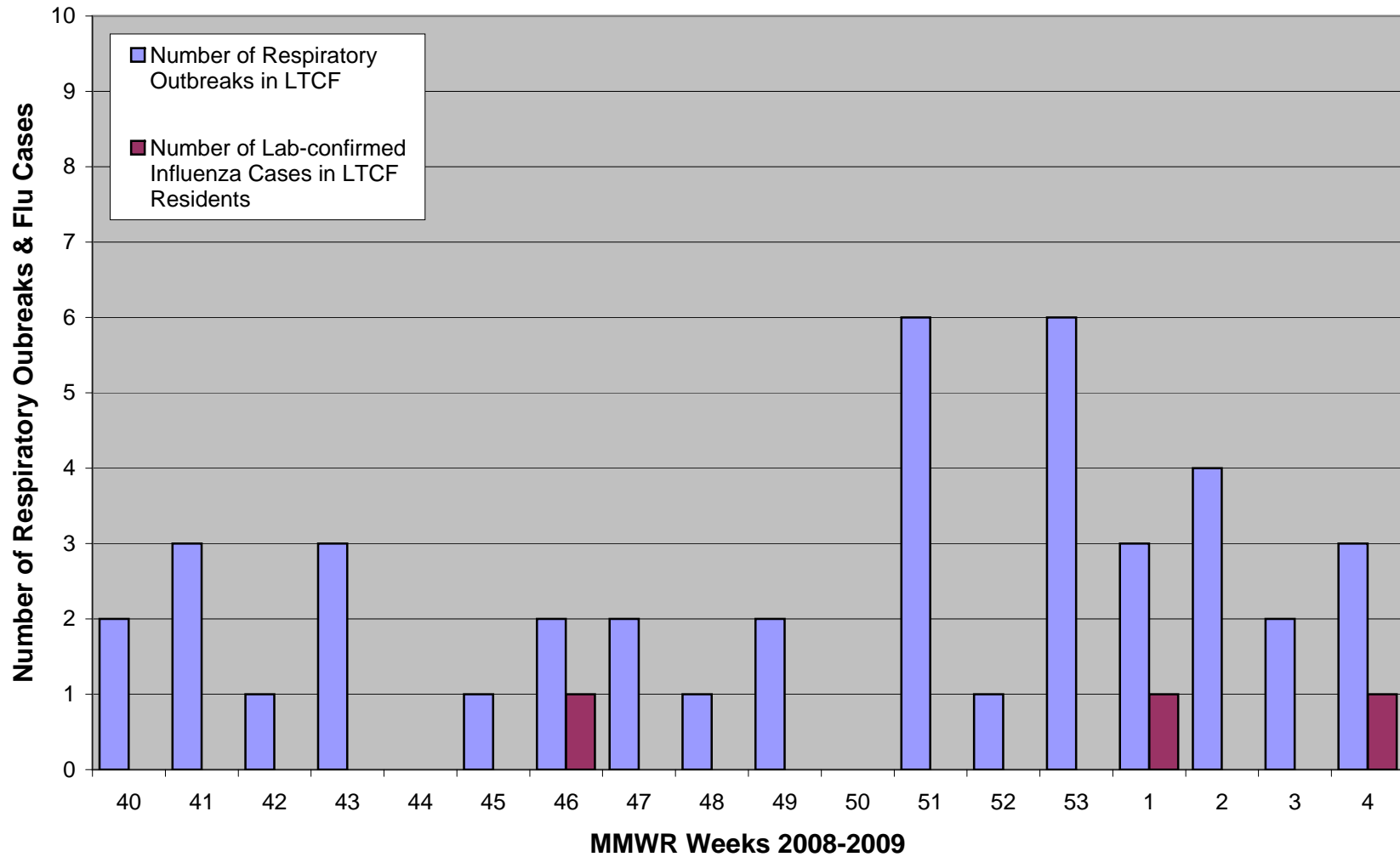


Figure 4. Respiratory Outbreaks & Influenza in Long-term Care Facilities (LTCF), Connecticut, 2008-2009 Influenza Season



**Figure 5. Outpatient Influenza-Like Illness Surveillance Network (ILINet),
Statewide Visits of Patients with Influenza-Like Illness (ILI), Connecticut,
2007-2009**

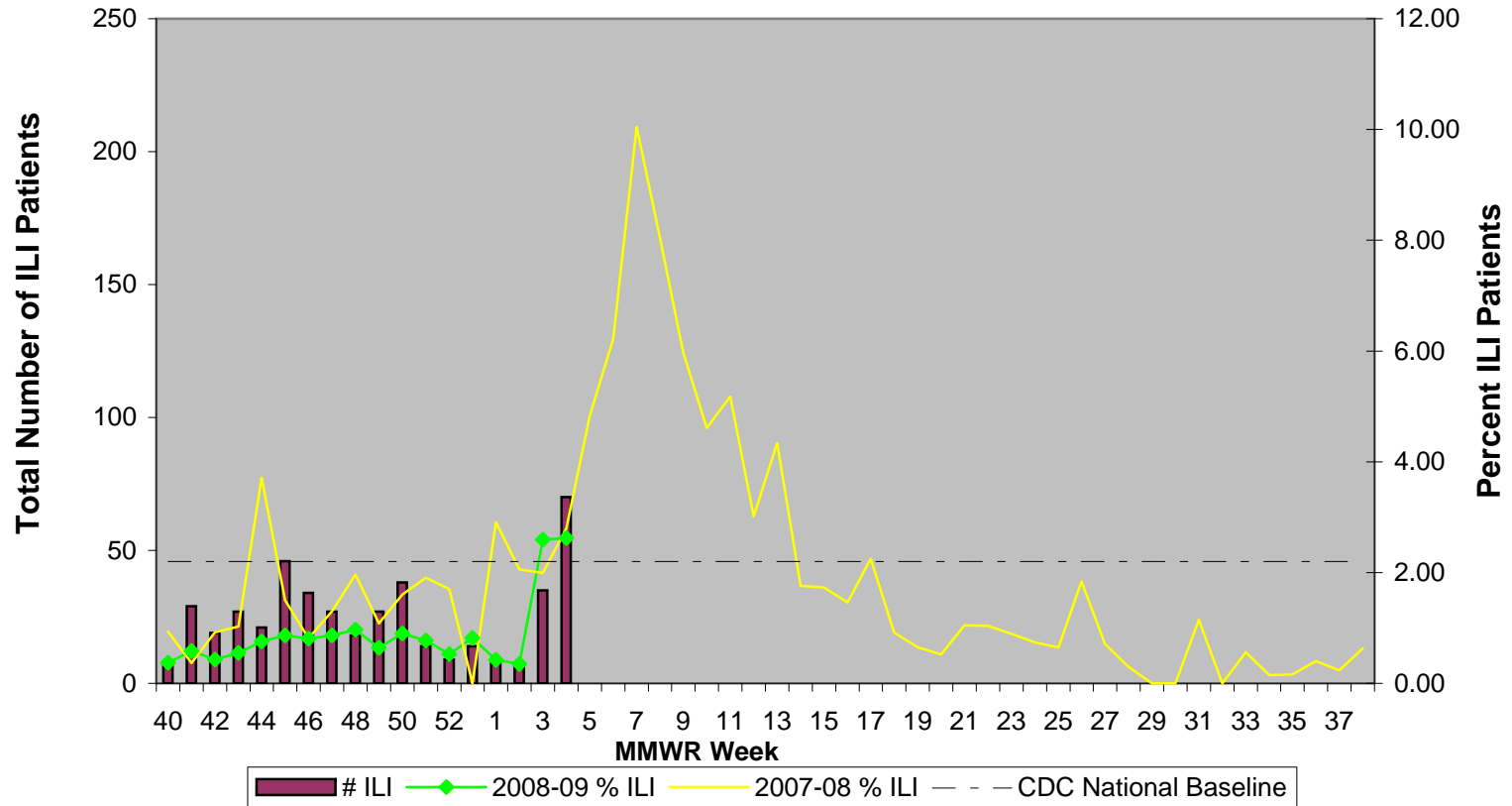


Figure 6. Hospital Emergency Department Syndromic Surveillance (HEDSS) System, Statewide "Fever/Flu" Visits by Flu Season, Connecticut, 2006-2009

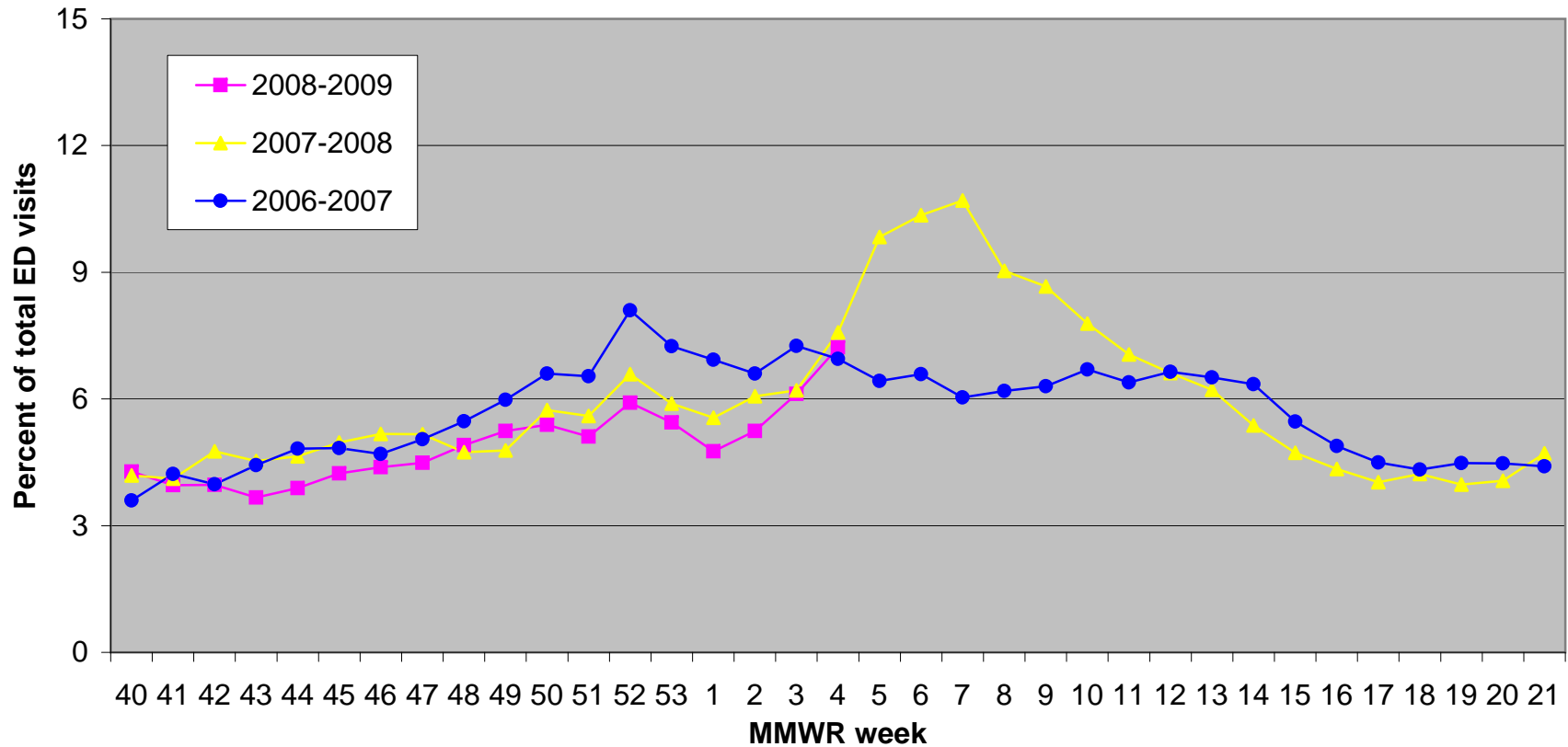


Figure 7. Hospital Admissions Syndromic Surveillance (HASS) System, Connecticut Statewide Pneumonia Admissions by Flu Season; 2005-2009

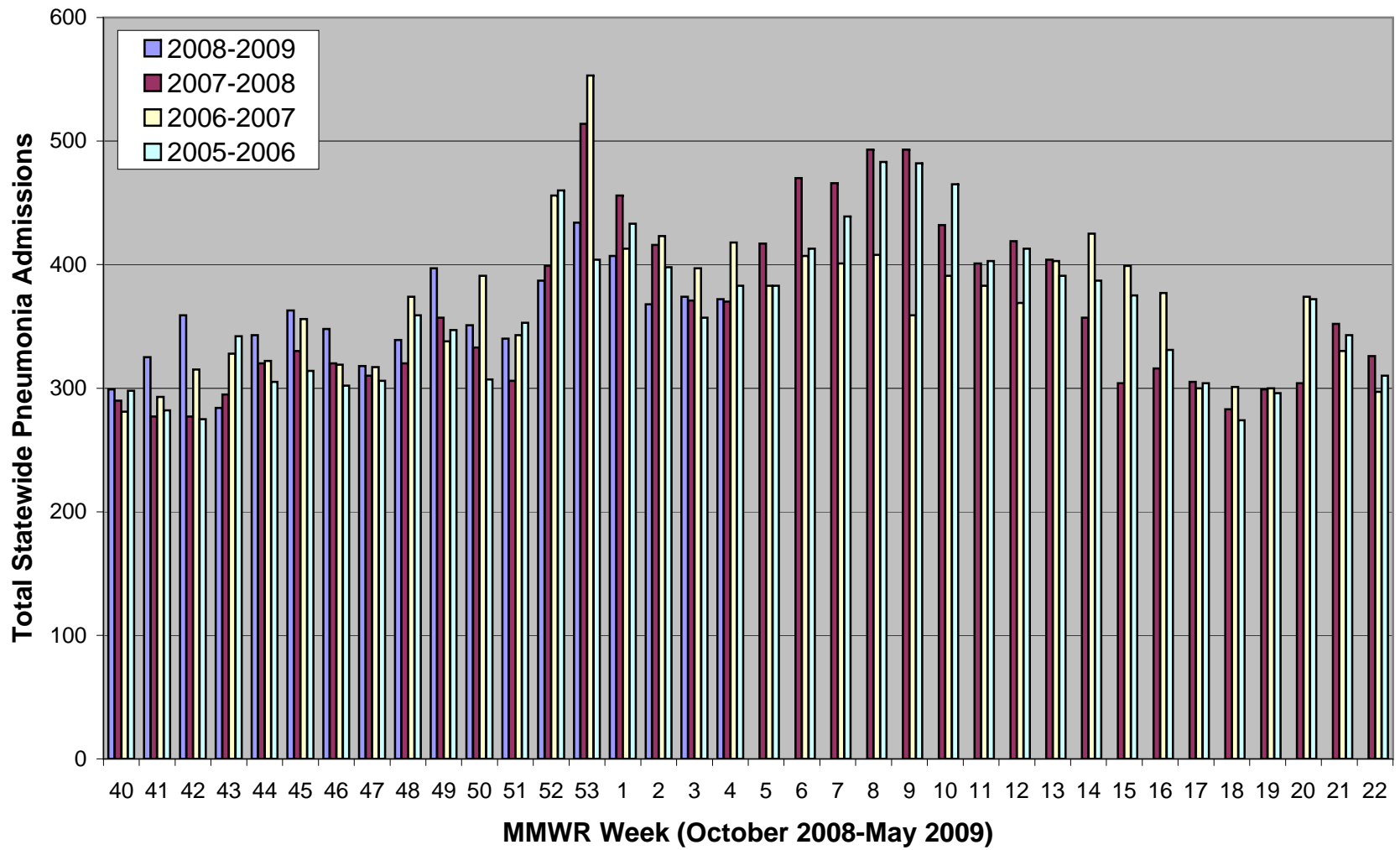


Figure 8. CDC 122 Cities Surveillance: Pneumonia & influenza Deaths in Selected Connecticut Cities, 2007-2008 & 2008-2009 Flu Seasons

