

**STATE OF CONNECTICUT DEPARTMENT OF PUBLIC HEALTH
PRELIMINARY INFLUENZA ACTIVITY REPORT
For Week 8 (week ending February 28, 2009)**



Preliminary influenza data reviewed from the week ending February 28th revealed that a high level of activity continues to be observed during the 22nd week of the official 2008-2009 influenza season. These data include a total of 3,181 laboratory confirmed test results from various Connecticut hospitals that reveal the presence of both type A and type B flu viruses, and include reports from all 8 (Fairfield, Hartford, Litchfield, Middlesex, New Haven, New London, Tolland, and Windham) Connecticut counties (see Table 1, Figure 1). Our national flu activity classification remained as “widespread” as a result of the continued high flu activity statewide. The DPH laboratory has culture-confirmed the presence of influenza virus in 235 clinical specimens. Characterization of these isolates reveals the presence of the influenza A (H1N1) subtype in 116 specimens, the influenza A (H3N2) subtype in 46 specimens, an unspecified influenza A isolate in 2 specimens, and influenza B in 71 specimens (see Figure 2). Clinicians should be aware of oseltamivir resistance among many flu A (H1N1) strains. Although decreasing, influenza activity remains widespread and exceeds weekly activity observed during the equivalent weeks in most of the last 5 seasons (see Figures 3a & 3b).

Six additional indicators of flu activity are being monitored throughout these initial weeks of the 2008-2009 flu season. Information on respiratory outbreaks and laboratory confirmed influenza cases in long-term care facilities are shown in Figure 4. Data on Connecticut residents presenting with influenza-like-illness (ILI) as reported by participants of the United States Outpatient Influenza-like Illness Surveillance Network (ILINet) (formerly known as the U.S. Influenza Sentinel Provider Surveillance Network) are shown in Figure 5. These reporting sites also include participants in the Connecticut Influenza Super Sentinel Surveillance Pilot Project organized this year to provide additional information on outpatient ILI activity.

Data on emergency department visits from our Hospital Emergency Department Syndromic Surveillance (HEDSS) System are also analyzed. One category in particular, fever/flu, has been shown to correlate well with influenza activity (see Figure 6). Patients with more severe illness who are admitted into Connecticut hospitals are tracked by the Connecticut Hospital Admissions Syndromic Surveillance (HASS) System. Data on one category, total statewide pneumonia admissions, correlates with flu activity (see Figure 7). Finally, selected mortality data are monitored each week including pneumonia and influenza deaths from Connecticut cities that participate in the U.S. 122 Cities Mortality Reporting System (see Figure 8), and reports of influenza associated pediatric deaths (none reported to date this flu season). These surveillance systems are providing additional evidence that Connecticut is experiencing a high, but decreasing level of flu activity as compared with recent influenza seasons.

The CDC has posted its 23rd national influenza activity map showing no states with initial “sporadic” flu activity, 1 state with “local” flu activity, 14 states with a higher “regional” level of activity, and 35 states with the highest “widespread” level of activity. The most recent CDC weekly influenza activity map can be viewed at: <http://www.cdc.gov/flu/weekly/usmap.htm>

If you have any questions concerning this report, please contact Alan Siniscalchi or Maria Andrews at the Department of Public Health, Epidemiology and Emerging Infections Program, by calling 860-509-7994.

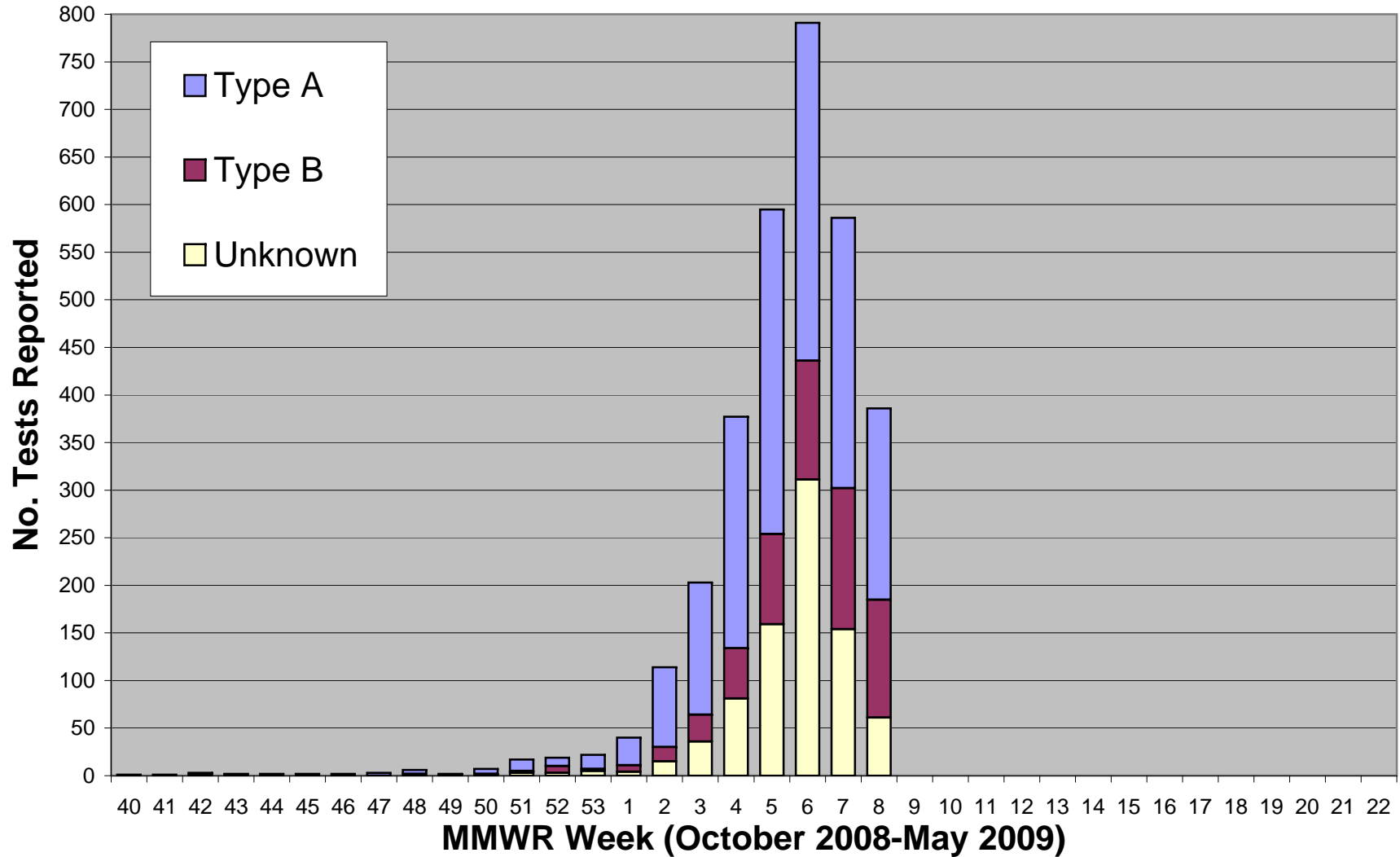
**Connecticut Department of Public Health
2008-2009 Laboratory Confirmed Influenza Testing
For Week 8 (week ending February 28, 2009)**

Results by		Previous	New	Total
TEST:	Culture	216	19	235
	Rapid Test	2,559	387	2,946
FLU TYPE:	Type A	1,522	210	1,732
	Type B	481	133	614
	Unknown	772	63	835
COUNTY:	Fairfield	1,097	106	1,203
	Hartford	276	48	324
	Litchfield	117	22	139
	Middlesex	187	16	203
	New Haven	886	167	1,053
	New London	67	15	82
	Tolland	64	14	78
	Windham	81	18	99
	GENDER:	Female	1,426	221
	Male	1,349	185	1,534
Total		2,775	406	3,181

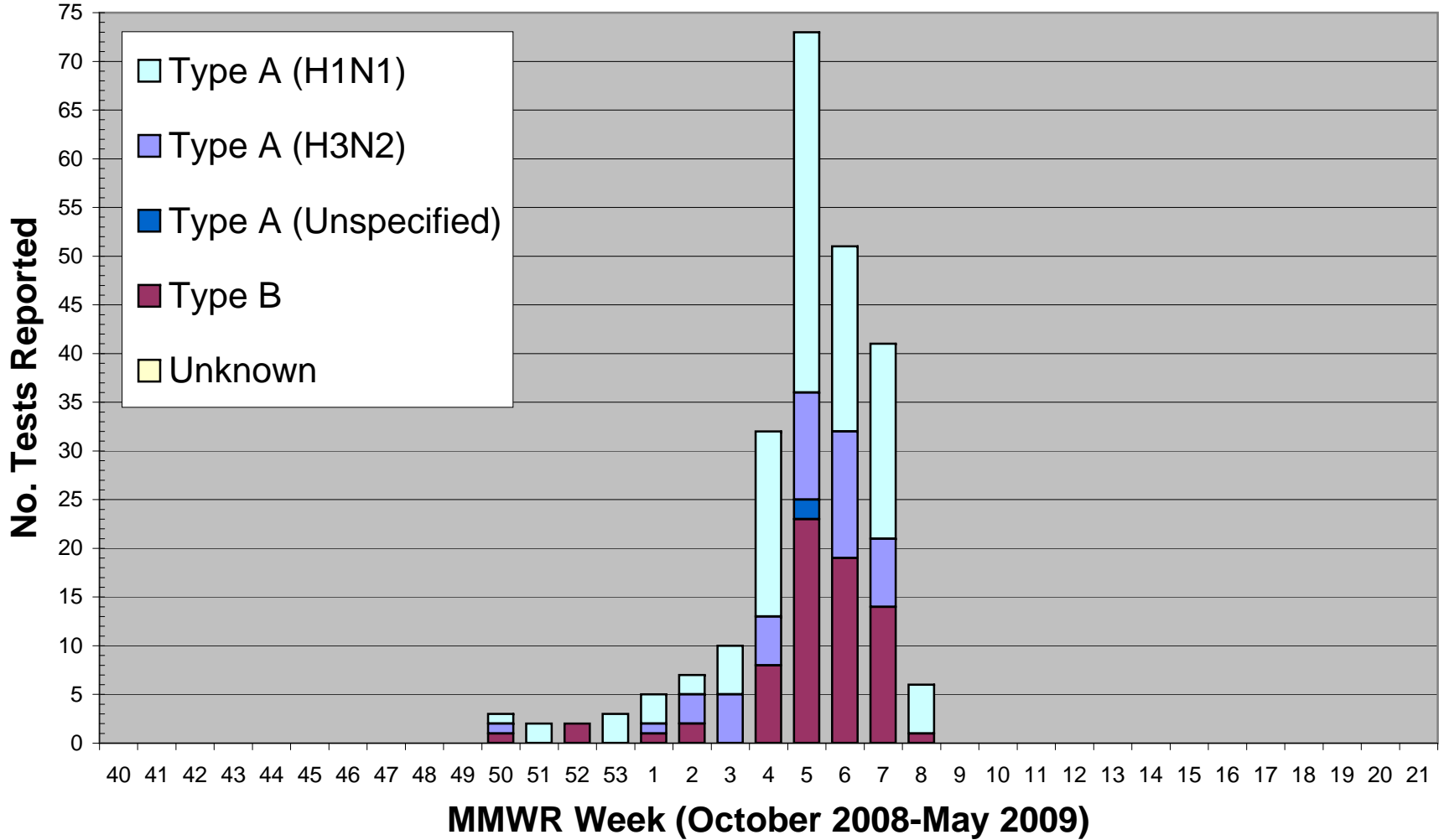
Age:	Previous	New	Total	Week	Dates - 2009	Total
0-4	266	75	341	1	January 4 - 10	40
5-24	1,654	171	1,825	2	January 11-17	114
25-64	723	133	856	3	January 18-24	203
≥65	132	27	159	4	January 25-31	377
Age Range: <1 – 101 Average Age: 22.4				5	February 1-7	595
				6	February 8-14	791
				7	February 15-21	586
				8	February 22-28	386

Week	Dates - 2008	Total	Week	Dates - 2009	Total
			9	March 1-7	
40	Sept. 28 - Oct. 4	1	10	March 8-14	
41	October 5-11	1	11	March 15-21	
42	October 12-18	3	12	March 22-28	
43	October 19-25	2	13	March 29- April 4	
44	Oct. 26 - Nov. 1	2	14	April 5-11	
45	November 2-8	2	15	April 12-18	
46	November 9-15	2	16	April 19-25	
47	November 16-22	3	17	April 26- May 2	
48	November 23 -29	6	18	May 3- 9	
49	Nov. 30 – Dec. 6	2	19	May 10-16	
50	December 7-13	7	20	May 17-23	
51	December 14-20	17	21	May 24-30	
52	December 21-27	19	22	May 31- June 6	
53	Dec. 28- Jan. 3	22			

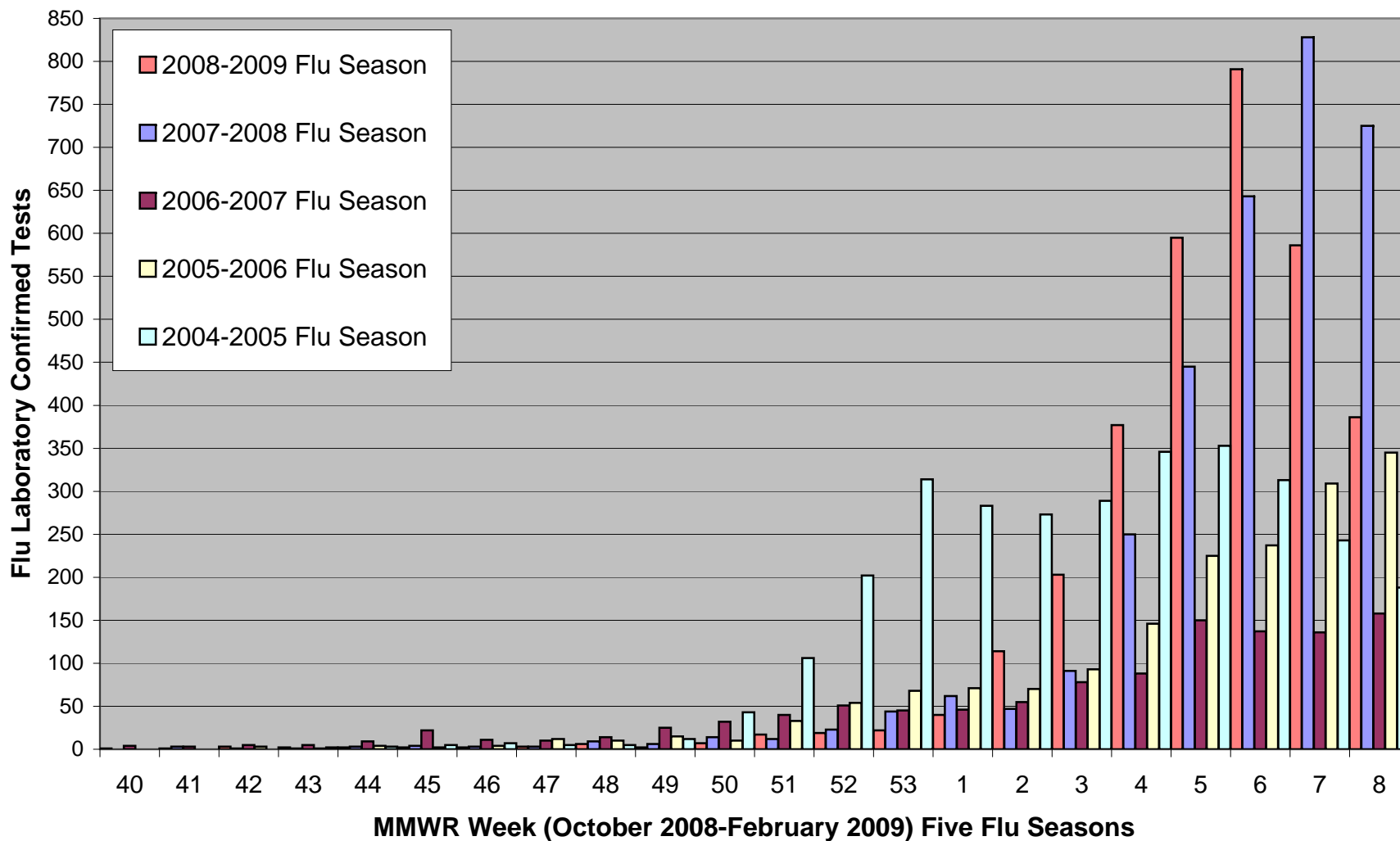
Figure 1. Laboratory Confirmed Tests by Flu Type, Connecticut, 2008-2009 Influenza Season



**Figure 2. Department of Public Health Laboratory Culture
Confirmed Tests by Flu Type,
Connecticut, 2008-2009 Flu Season**



**Figure 3a. Laboratory Confirmed Tests by Flu Season
Connecticut, 2004-2009**



**Figure 3b. Laboratory Confirmed Tests by Flu Season
Connecticut, 2003-2009**

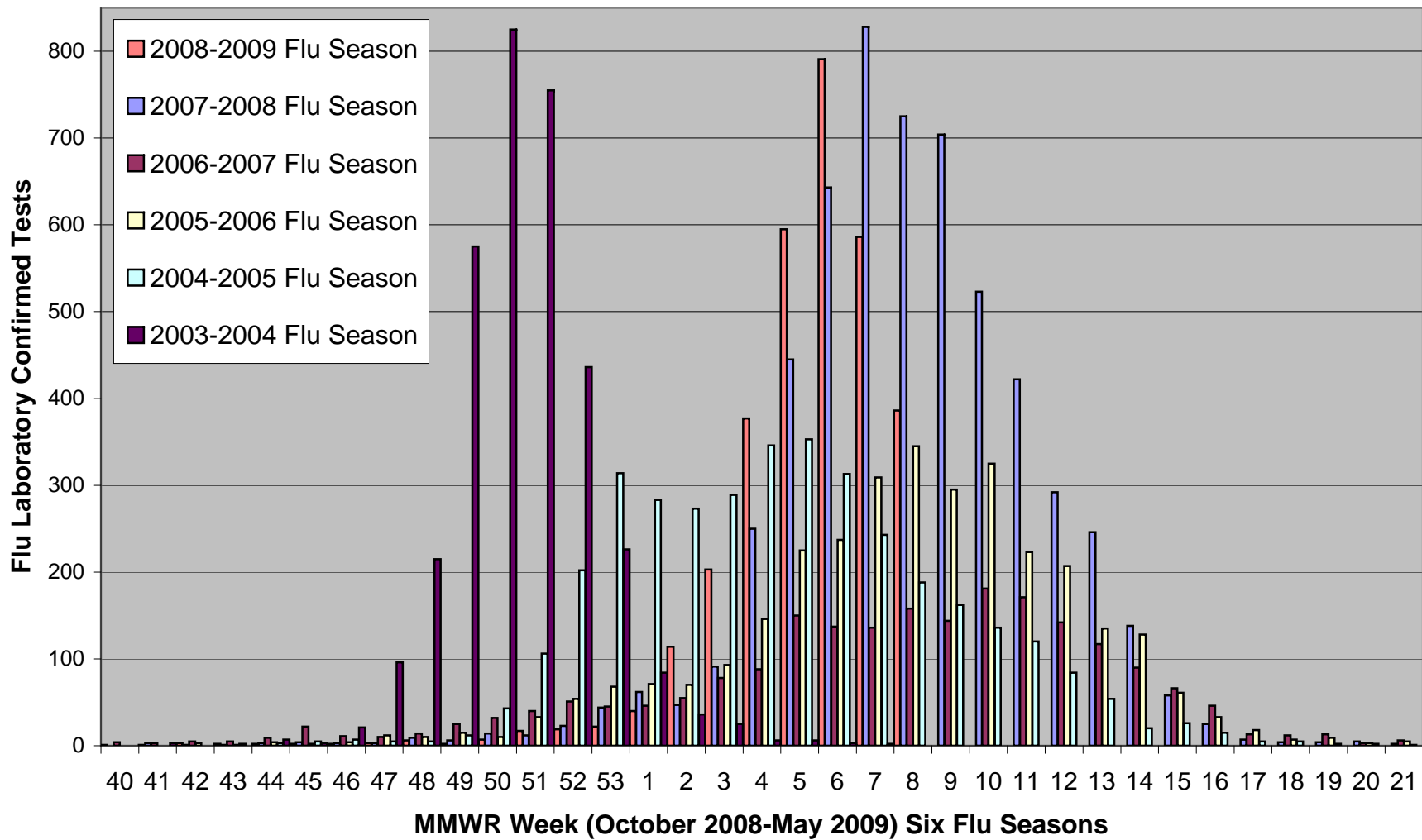
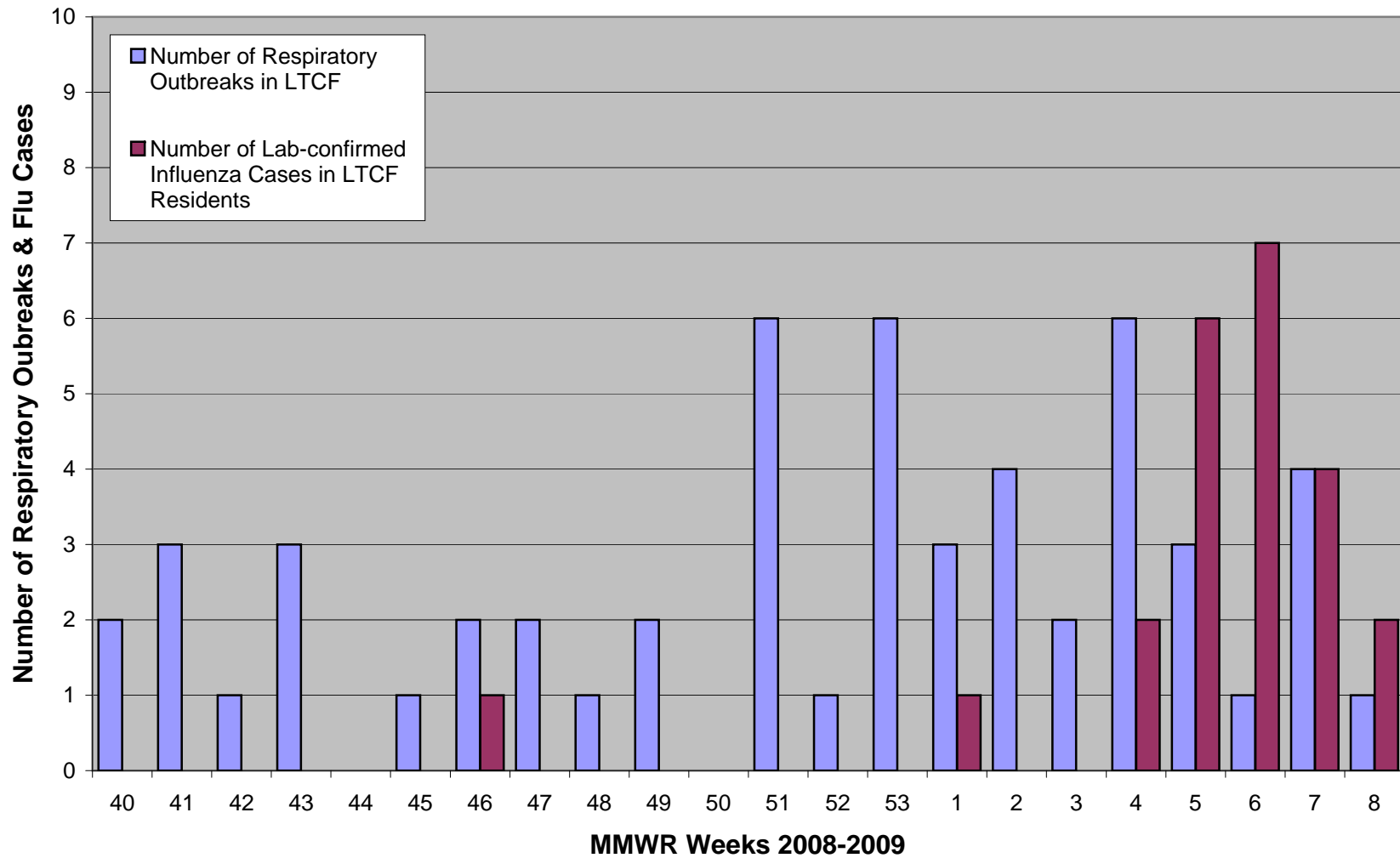


Figure 4. Respiratory Outbreaks & Influenza in Long-term Care Facilities (LTCF), Connecticut, 2008-2009 Influenza Season



**Figure 5. Outpatient Influenza-Like Illness Surveillance Network (ILINet),
Statewide Visits of Patients with Influenza-Like Illness (ILI), Connecticut,
2007-2009**

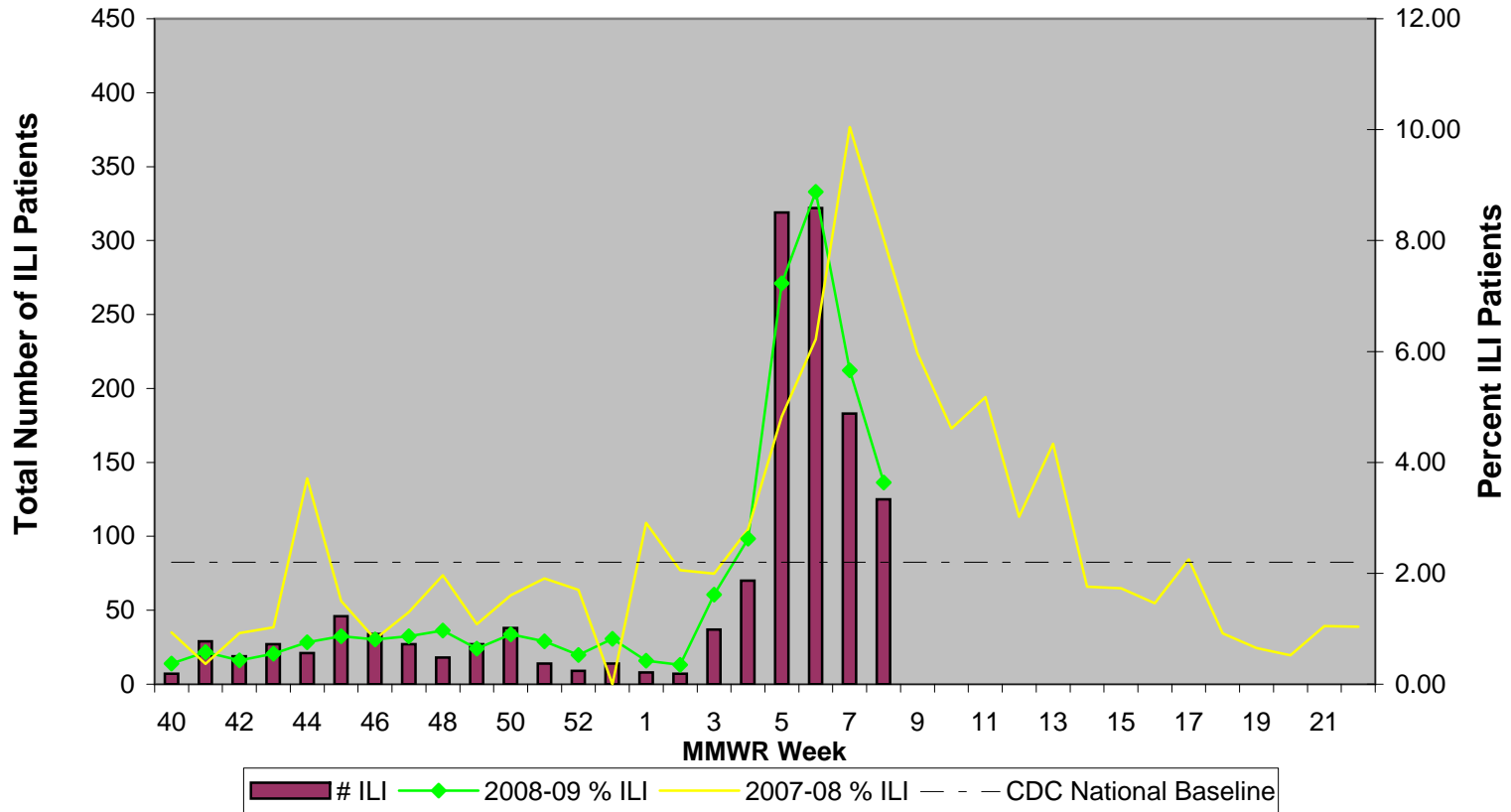


Figure 6. Hospital Emergency Department Syndromic Surveillance (HEDSS) System, Statewide "Fever/Flu" Visits by Flu Season, Connecticut, 2006-2009

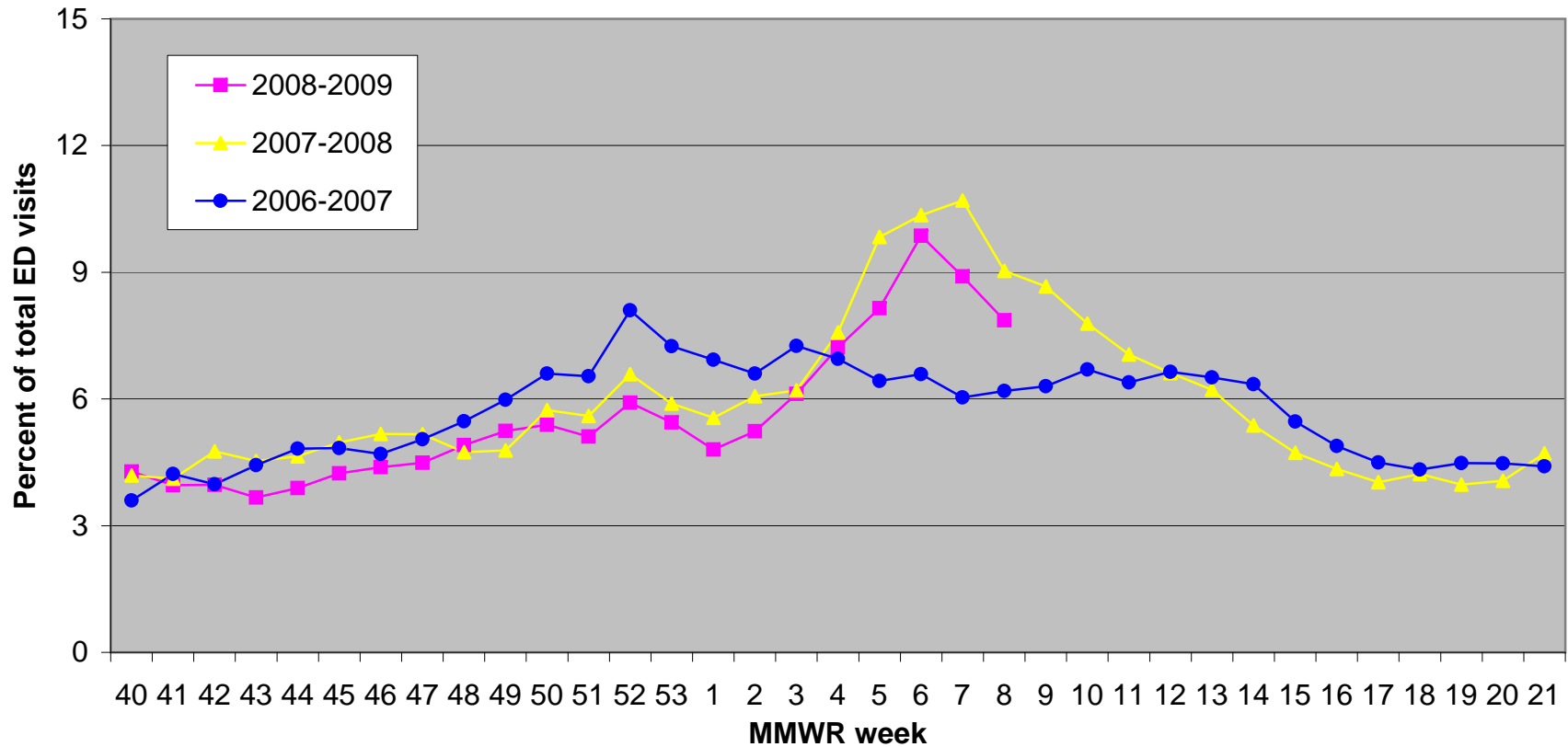


Figure 7. Hospital Admissions Syndromic Surveillance (HASS) System, Connecticut Statewide Pneumonia Admissions by Flu Season; 2005-2009

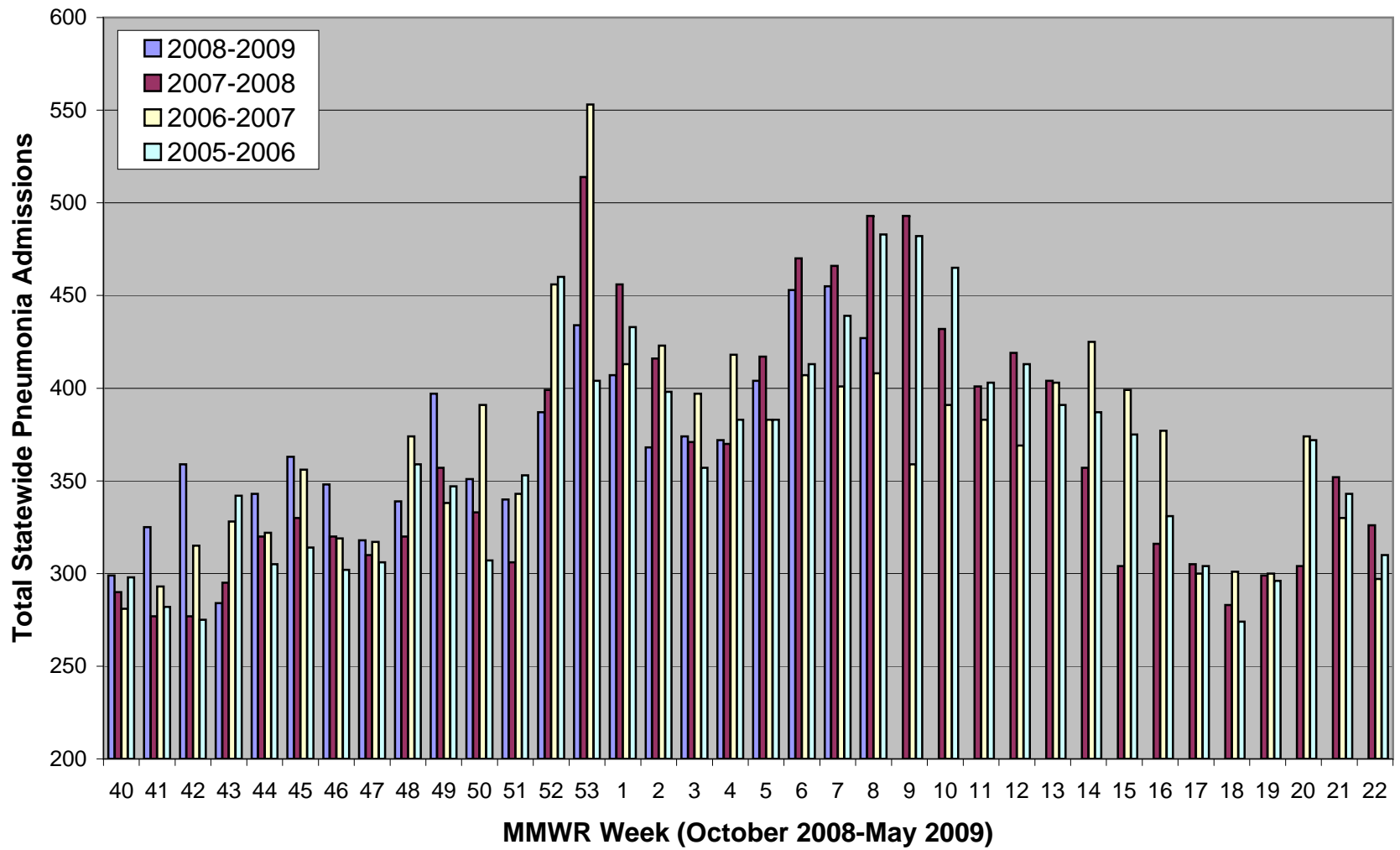


Figure 8. CDC 122 Cities Surveillance: Pneumonia & influenza Deaths in Selected Connecticut Cities, 2007-2008 & 2008-2009 Flu Seasons

